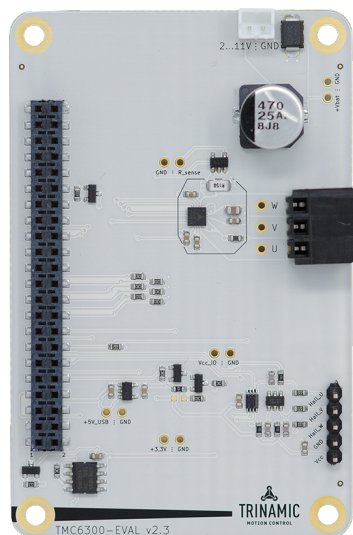


# TMC6300-EVAL Evaluation Board

Document Revision V1.0 • 2020-APR-02

The TMC6300-EVAL allows evaluation of the TMC6300 in combination with the TRINAMIC evaluation board system, or as stand-alone-board. It uses the standard schematic and offers several options in order to test different modes of operation.



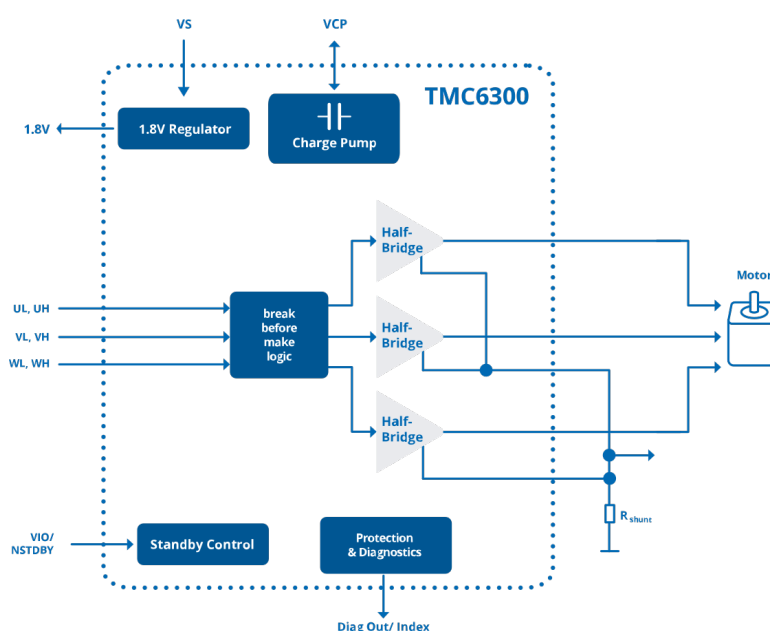
## Features

- TMC6300 low voltage three-phase BLDC/PMSM motor driver
- Supply voltage 2-11V DC, 2.0A coil current (peak)
- Direct Bridge control for BLDC or PMSM sine-commutation
- Standby <50nA typ. current draw
- Low  $R_{DSon}$  LS 170m $\Omega$  & HS 170m $\Omega$  (typ)
- Full protection & diagnostic output
- Tiny QFN 3\*3mm 20 pin package

## Applications

- IoT & Handheld devices
- Battery operated equipment
- Printers, POS
- Miniature 3D Printers
- Toys
- Office and home automation
- CCTV, Security
- HVAC
- Mobile medical devices

## Simplified Block Diagram



©2020 TRINAMIC Motion Control GmbH & Co. KG, Hamburg, Germany  
 Terms of delivery and rights to technical change reserved.  
 Download newest version at: [www.trinamic.com](http://www.trinamic.com)



Read entire documentation.

# Contents

<b>1</b>	<b>Getting Started</b>	<b>3</b>
1.1	First Start-Up . . . . .	4
<b>2</b>	<b>Hardware Information</b>	<b>5</b>
<b>3</b>	<b>Evaluation Features in the TMCL-IDE</b>	<b>6</b>
3.1	Standby . . . . .	6
<b>4</b>	<b>Revision History</b>	<b>7</b>
4.1	Document Revision . . . . .	7



# 1 Getting Started

## You need

- TMC6300-EVAL
- [Landungsbruecke](#) with latest firmware. (The Startrampe does not support the UART interface.)
- Eselsbruecke bridge board
- BLDC motor (e.g. QMot line)
- USB interface
- Power Supply
- Latest TMCL-IDE V3.0 and PC
- Cables for interface, motors and power

## Precautions

- Do not mix up connections or short-circuit pins.
- Avoid bundling I/O wires with motor wires.
- Do not exceed the maximum rated supply voltage!
- Do not connect or disconnect the motor while powered!

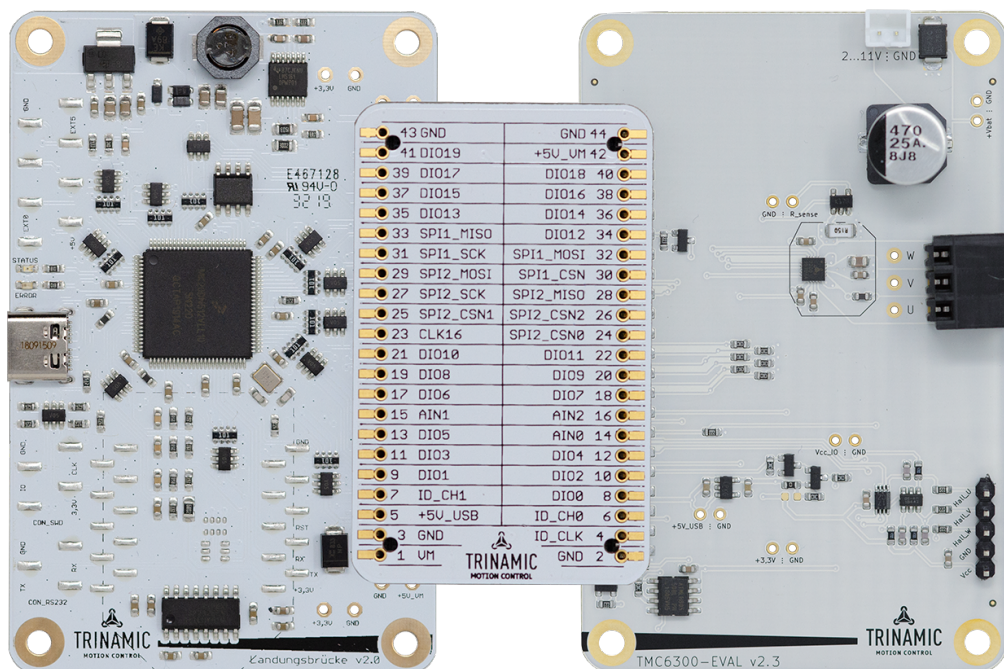


Figure 1: Getting started



## 1.1 First Start-Up

1. Make sure that the latest version of the TMCL-IDE 3.0 is installed. The TMCL-IDE can be downloaded from [www.trinamic.com/support/software/tmcl-ide/](http://www.trinamic.com/support/software/tmcl-ide/).
2. Open the TMCL-IDE and connect the Landungsbruecke via USB to the computer. For Windows 8 and higher is no driver needed, on Windows 7 machines the TMCL-IDE is installing the driver automatically.
3. Verify that the Landungsbruecke is using the latest firmware version. The firmware version is shown in the connected device tree.

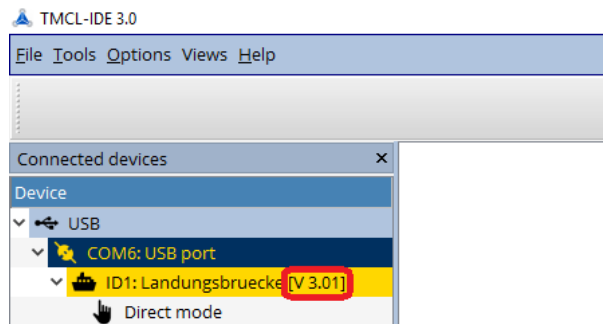


Figure 2: Firmware Version

4. The TMCL-IDE 3.0 needs room to show all important information and to provide a good overview. Therefore, arrange the main window related to your needs. We recommend using full screen. For evaluation boards it is essential to have access to the registers. Therefore open up the Register Browser (left side). For a better view click top right on the normal icon to get a maximized register browser window.
5. The TMCL-IDE includes a dialogue for diagnostic tasks. Further, the dialogue provides an overview of the connected motion controller and driver chips. A window pops up immediately after connecting the evaluation kit the first time. The window shows the actual status of the connections. The second tab of the dialogue offers the possibility to choose basic settings or to reset the module to factory defaults.

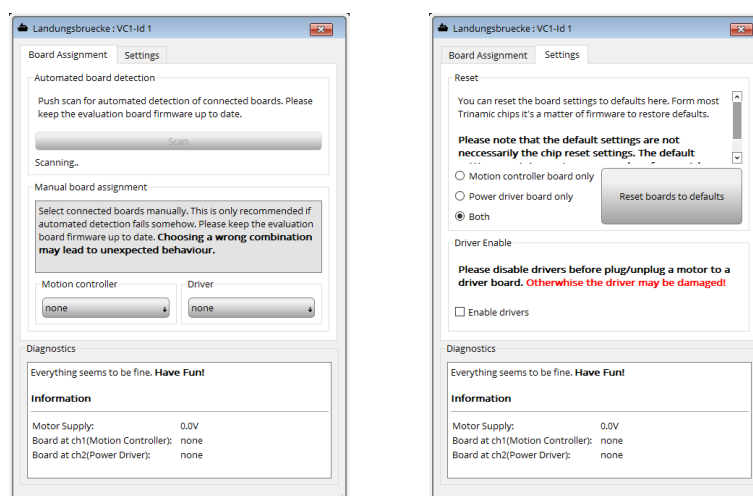


Figure 3: Landungsbruecke Dialogue



## 2 Hardware Information

All design files for our evaluation boards are available for free. We offer the original ECAD files (Eagle, Altium, or PADS), Gerber data, the BOM, and PDF copies. Please check schematics for Jumper settings and input/output connector description.

The files can be downloaded from the evaluation boards' website directly at our homepage: [TRINAMIC Eval Kit homepage](#).

---

**Note**

If files are missing on the website or something is wrong please send us a note.

---



### 3 Evaluation Features in the TMCL-IDE

This chapter gives some hints and tips on using the functionality of the TMCL-IDE, e.g., how to use the velocity mode or using the wizards.

#### Note

In order to achieve good settings please refer to descriptions and flowcharts in the TMC6300-LA data sheet. The register browser of the TMCL-IDE provides helpful information about any currently selected parameter. Beyond that, the data sheet explains concepts and ideas which are essential for understanding how the registers are linked together and which setting will fit for which kind of application. For getting more familiar with the evaluation kit in the beginning of your examinations, drive the motor using velocity mode and/or positioning mode first. Beyond this, the direct mode function can be used. This way, TMCL commands can be sent to the evaluation board system.

#### 3.1 Standby

To control the standby feature for the TMC6300-EVAL, open the Standby tool and press the standby button. Pay attention to any hints given by the tool.

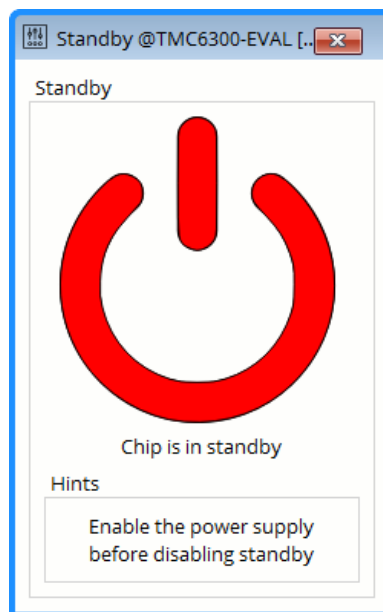


Figure 4: Control the Standby of the TMC6300 (similar for other ICs).



## 4 Revision History

### 4.1 Document Revision

Version	Date	Author	Description
1.0	2020-APR-02	LH	Initial release.

*Table 1: Document Revision*



# Mouser Electronics

Authorized Distributor

Click to View Pricing, Inventory, Delivery & Lifecycle Information:

Trinamic:

[TMC6300-EVAL](#) [TMC6300-EVAL-KIT](#)