

**Mallory Sonalert Products, Inc.**

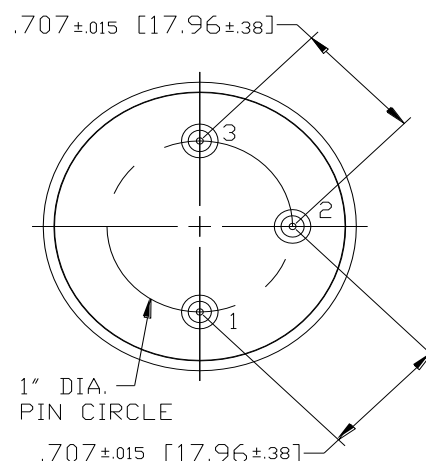
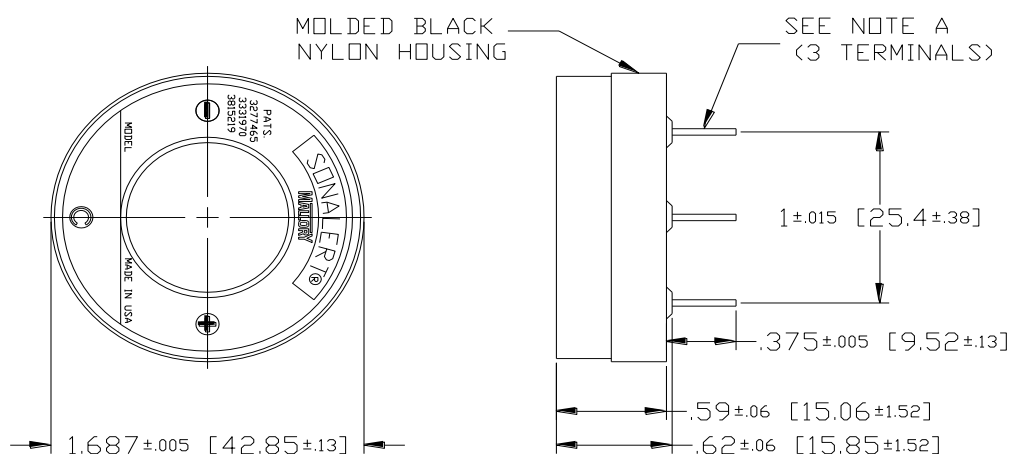
Part #:

SBM616PUR**Sales Outline Drawing**

Revision:

A**Specifications:**

Sound Level Category	Medium
Mode of Operation	Continuous or Fast Pulse @ 2 - 10 PPS
Voltage Rating	6 to 16 Vdc
Frequency	2900 \pm 500 Hz
Loudness @ Min Vdc	68 dB(A) @ 2 Feet and 6 Vdc
Loudness @ Max Vdc	78 dB(A) @ 2 Feet and 16 Vdc
Current Draw	3-12mA
Duty Cycle (%)	50
Mounting	Printed Circuit Board (See Note B)
Housing Material	6/6 Nylon, Color: Black
Storage Temperature	-40° to +85° C
Operating Temperature	-30° to +65° C
Weight (Typical)	0.6 oz (17g)
Options	Please contact factory.

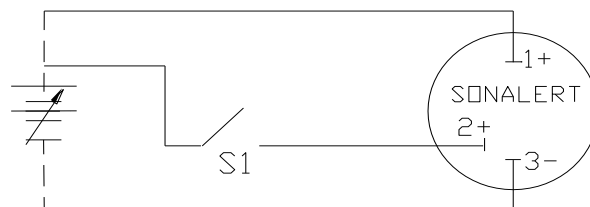
Dimensions: Inches (mm)**ROHS Compliant****NOTE A:**

TERMINALS - .031" DIA. SOLDER COATED
COPPER-CLAD STEEL.

TERMINAL 1 IS POSITIVE (CONTINUOUS),
TERMINAL 3 IS NEGATIVE,
TERMINAL 2 IS POSITIVE (PULSE).

NOTE B:

MOUNTING - INSERT INTO PRINTED CIRCUIT
BOARD AND HAND OR MACHINE SOLDER.

WIRING DIAGRAM

IF S1 IS OPEN, UNIT IS CONTINUOUS
IF S1 IS CLOSED, UNIT IS PULSATING

Mouser Electronics

Authorized Distributor

Click to View Pricing, Inventory, Delivery & Lifecycle Information:

[Mallory Sonalert:](#)

[SBM616PUR](#)