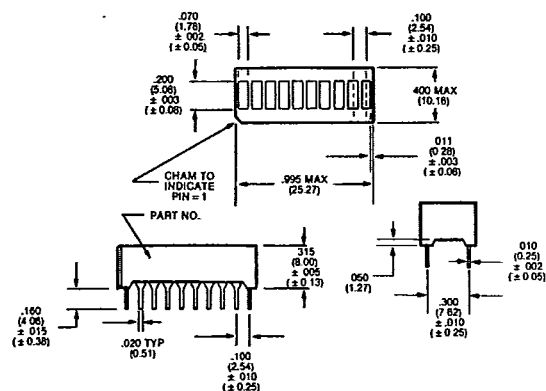




SSA-LXB10 (48)
10 UNIT BAR ARRAY

- ARRAY OF INDIVIDUALLY DRIVEN LEDS
- EASILY SEEN LARGE LEDS
- MATCHED UNITS FOR COLOR AND INTENSITY
- END STACKABLE
- STANDARD D.I.P. PACKAGE
- WIDE VIEWING ANGLE

(Dimensions in Millimeters)



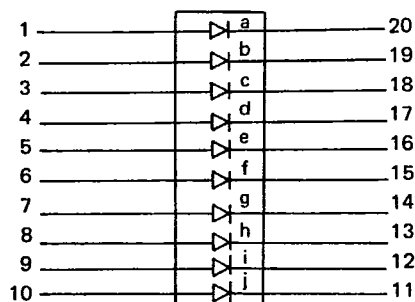
- INSTRUMENTATION
- INDUSTRIAL CONTROLS
- COMPUTERS
- MUSICAL AMPLIFIERS

Limits of Safe Operation (at 25°C)			
Color	Power Dissip.	Power Derating Over +25°C/°C	Continuous IF Max.
Red	65 mW	−1.6 mW	150 mA
Dk-Red	85 mW	−1.4 mW	60 mA
Green	85 mW	−1.4 mW	60 mA
Yellow	85 mW	−1.4 mW	60 mA
Orange	85 mW	−1.4 mW	60 mA
Peak Forward Current (1μs Pulse .03% Duty Cycle) 1.0 A			
Storage and Operating Temperature −55 to +100°C			
Soldering Time @ 260°C 3 Sec. Max.			

Lumex Part Number	Light Color (Wave Length)	Lens Color	Intensity (Flux) @ 20 mA Ea. Segment	Forward Volts	Reverse Volts @ 100 mA
SSA-LXB10RW	Red (655Nm)	Milky White	150 FL	1.6 Typ. 2.1 Max.	3.0 Min.
SSA-LXHB10HW	Dk-Red (695NM)	Milky White	160 FL	2.1 Typ. 2.6 Max.	5.0 Min.
SSA-LXB10GW	Green (565NM)	Milky White	180 FL	2.1 Typ. 2.6 Max.	5.0 Min.
SSA-LXB10YW	Yellow (585NM)	Milky White	200 FL	2.1 Typ. 2.6 Max.	5.0 Min.
SSA-LXB10OW	Dk-Red (635NM)	Milky White	250 FL	2.1 Typ. 2.6 Max.	5.0 Min.

COLOR COMBINATIONS AVAILABLE AT NO EXTRA COST

INTERNAL CIRCUIT DIAGRAMS



Pin	Function	Pin	Function
1	Anode a	11	Cathode j
2	Anode b	12	Cathode i
3	Anode c	13	Cathode h
4	Anode d	14	Cathode g
5	Anode e	15	Cathode f
6	Anode f	16	Cathode e
7	Anode g	17	Cathode d
8	Anode h	18	Cathode c
9	Anode i	19	Cathode b
10	Anode j	20	Cathode a

Use Code **(A)** Front Panels **(B)** Fault Indicator **(C)** Backlighting **(D)** Bright Point or Spot

See page 6 for typical operating curves

Mouser Electronics

Authorized Distributor

Click to View Pricing, Inventory, Delivery & Lifecycle Information:

Lumex:

[SSA-LXB100W](#)