

# LUMEX *digi-lites*

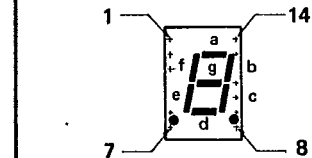
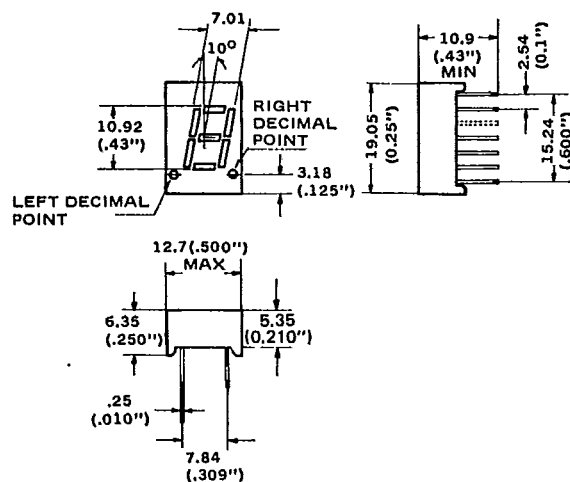
## NUMERIC DISPLAYS SINGLE DIGIT SERIES

0.43"

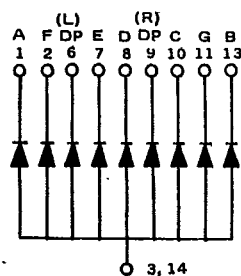
LDS-41X

Line Item	Lumex Part Number		Colors		Ta = 25°C Absolute Maximum Ratings					Ta = 25°C Electrical-Optical Characteristics					
					VR	IF	IFP	PD	TOPR	IF	VF typ.	VF max.	IV typ.	IR max.	IP
	Com. Anode	Com. Cathode	Font	Segment											
1	LDS-A411RI	LDS-C411RI	Red		5	25	55	400	-25 ~ +80°	20	1.7	2.0	350	100	655
			Gray	White											
2	LDS-A412RI	LDS-C412RI	Green		5	20	50	416	-25 ~ +80°	10	2.2	2.6	1500	100	568
			Gray	White											
3	LDS-A413RI	LDS-C413RI	Yellow		5	20	50	416	-25 ~ +80°	10	2.1	2.6	1300	100	585
			Gray	White											
4	LDS-A414RI	LDS-C414RI	Orange/Red		5	20	50	416	-25 ~ +80°	10	2.1	2.6	1400	100	635
			Gray	White											
5	LDS-A415RI	LDS-C415RI	Hi-Red		5	20	50	416	-25 ~ +80°	10	2.1	2.6	700	100	700
			Gray	White											
6	LDS-A416RI	LDS-C416RI	Super-Red		5	25	55	400	-25 ~ +80°	20	1.8	2.1	2700	100	660
			Gray	White											

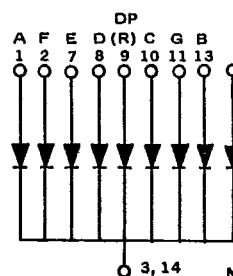
## PACKAGE DIMENSIONS & PIN FUNCTIONS



- NOTE:
- ALL DIMENSIONS ARE IN MILLIMETERS AND INCHES TOLERANCE IS 0.25(0.01") UNLESS OTHERWISE IS SPECIFIED.
  - IV TESTED CONDITION IF=10mA AND THE LISTED IV IS THE AVERAGE INTENSITY FOR EVERY SEGMENT LISTED.



Common Anode NOTE: 4, 5, 12 (NP)



Common Cathode NOTE: 4, 5, 12 (NP)

# Mouser Electronics

Authorized Distributor

Click to View Pricing, Inventory, Delivery & Lifecycle Information:

[Lumex:](#)

[LDS-A411RI](#)