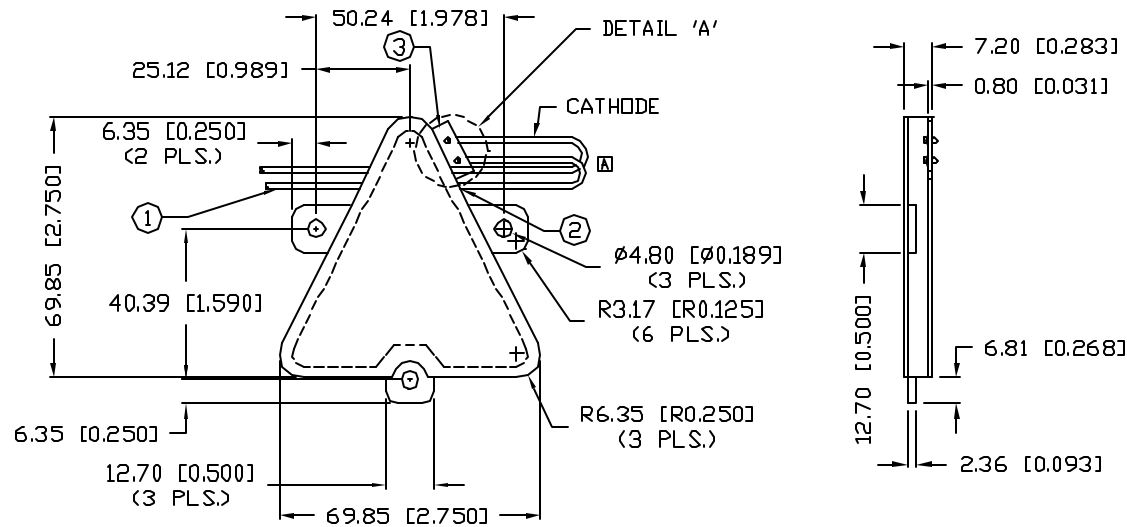
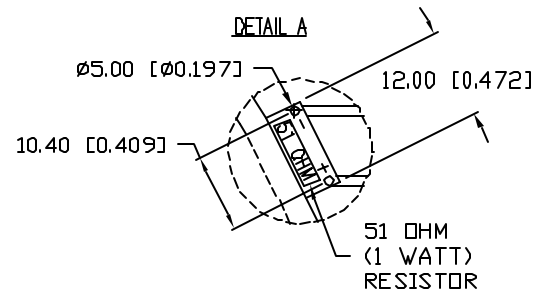
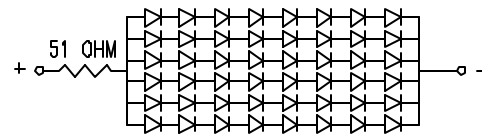


# UNCONTROLLED DOCUMENT



6 IN PARALLEL,  
8 IN SERIES,  
WITH 51 OHM RESISTOR.



PART NUMBER		REV.
SSB-COB6370IW-T-8		A
REV.	E.C.N. NUMBER AND REVISION COMMENTS	DATE
A	E.C.N. #10BRDR. & 10842.	3.15.02

## ELECTRO-OPTICAL CHARACTERISTICS $T_A=25^\circ\text{C}$ PER MODULE

PARAMETER	MIN	TYP	MAX	UNITS	TEST COND
PEAK WAVELENGTH		635		nm	
FORWARD VOLTAGE		24	30	$V_f$	
REVERSE VOLTAGE	48			$V_r$	$V_r=200\mu\text{A}$
LUMINOUS INTENSITY		160		$\text{cd/m}^2$	$I_f=80\text{ mA}$
EMITTED COLOR:	RED				
REFLECTOR FINISH:	MILKY WHITE				

## LIMITS OF SAFE OPERATION AT $25^\circ\text{C}$ PER MODULE

PARAMETER	MAX	UNITS
PEAK FORWARD CURRENT *	150	mA
STEADY CURRENT	120	mA
POWER DISSIPATION	3.0	W
DERATE FROM $25^\circ\text{C}$	67.4	mW/ $^\circ\text{C}$
OPERATING TEMP.	-40 TO +85	$^\circ\text{C}$
STORAGE TEMP.	-40 TO +85	$^\circ\text{C}$
SOLDERING TEMP.	+260	$^\circ\text{C}$
2.0mm FROM BODY		3 SEC. MAX

\*  $t < 10\mu\text{s}$

## NOTES:

- BUNDLE WIRE.
- GLUE WIRES TO BACK OF PART.
- COLOR MARK.

# UNCONTROLLED DOCUMENT

\*UNLESS OTHERWISE SPECIFIED TOLERANCES PER DECIMAL PRECISION ARE: X=±1 (±0.039), XX=±0.5 (±0.020), XXX=±0.25 (±0.010), XXXX=±0.127 (±0.005). LEAD SIZE=±0.05 (±0.002), LEAD LENGTH=±0.75 (±0.030). MIN=+DECIMAL PRECISION MAX=+0.00 -0.00 -DECIMAL PRECISION

REV.	PART NUMBER	CONFIDENTIAL INFORMATION		LUMEX INC.	
A	SSB-COB6370IW-T-8	THE INFORMATION CONTAINED IN THIS DOCUMENT IS THE PROPERTY OF LUMEX INC. EXCEPT AS SPECIFICALLY AUTHORIZED IN WRITING BY LUMEX INC., THE HOLDER OF THIS DOCUMENT SHALL KEEP ALL INFORMATION CONTAINED HEREIN CONFIDENTIAL AND SHALL PROTECT SAME IN WHOLE OR IN PART FROM DISCLOSURE AND DISSEMINATION TO ALL THIRD PARTIES.		290 E. HELEN ROAD PALATINE, IL 60067-6976 PHONE: +1.847.359.2790 US WEB: www.lumex.com TW WEB: www.lumex.com.tw	
TRIANGULAR BACKLIGHT DISPLAY, 48 CHIPS ON BOARD, 635nm RED, 24 VOLT.		RELIABILITY NOTE OUR MANY YEARS OF EXPERIENCE DATA ACCUMULATION INDICATE THAT SOLDER HEAT IS A MAJOR CAUSE OF EARLY AND FUTURE FAILURE. PLEASE PAY ATTENTION TO YOUR SOLDERING PROCESS.		DRAWN BY: SS/CT	CHECKED BY: APPROVED BY: DATE: 4.3.00 PAGE: 1 OF 1 SCALE: N/A

# Mouser Electronics

Authorized Distributor

Click to View Pricing, Inventory, Delivery & Lifecycle Information:

Lumex:

[SSB-COB6370IW-T-8](#)