

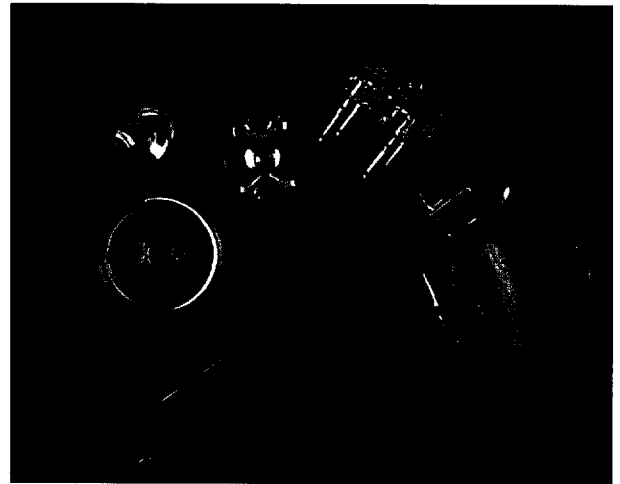
Outdoor Signage, Discrete LEDs, High Power Chips

Applications/Uses

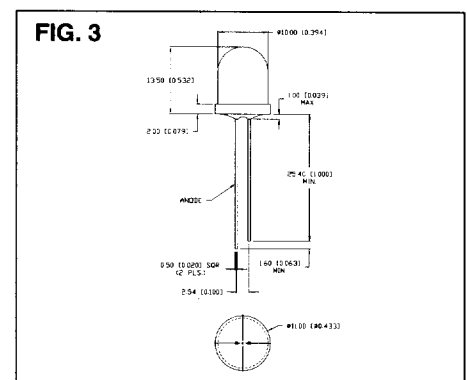
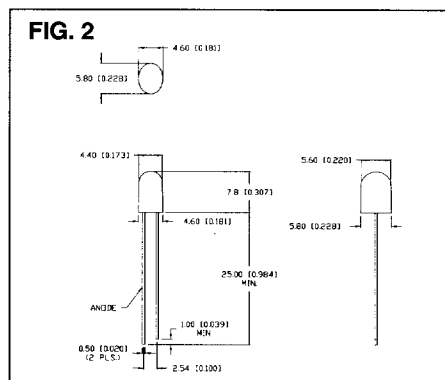
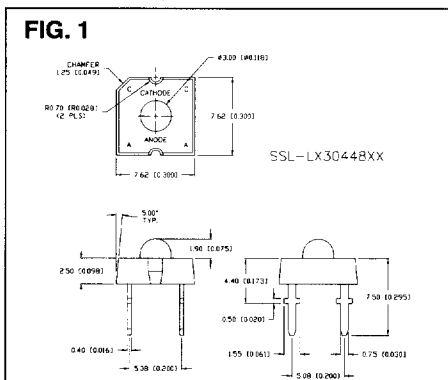
- Score Boards
- Message Boards
- Warning Lights
- Backlighting Overlays and Graphics

Features/Options

- State-of-the-art Chip Technology
- Low Power Consumption (2-4 Volts, 20mA)
- Long Lasting (100K+ Life Hours)
- Available Bulk or T&R
- 5V or 12V Internal Resistor
- Blinking
- Custom Shapes/Easily Tooled/Low Minimums



Part Number	Emitted Color	Wavelength (nm)	Material	Intensity mCD @ 20mA (If) (Typical)	Viewing Angle° 2x theta	Fwd Voltage per Circuit (Vf) (Typical)	Standard Common Pin	Figure
SSL-LX30448 SERIES – T3mm LED w/7.6mm Square Body Very Wide Angle of Emission								
SSL-LX30448SIC	Super Intensity Red	636	AlInGaP	1250	50	2.0	-	1
SSL-LX30448SOC	Super Orange	610	AlInGaP	1500	50	2.0	-	1
SSL-LX30448SYC	Super Yellow	590	AlInGaP	1100	50	2.0	-	1
SSL-LX30448UPGC	Ultra Pure Green	525	InGaN/SiC	400	50	3.5	-	1
SSL-LX30448USBC	Ultra Super Blue	470	InGaN/SiC	400	50	3.5	-	1
SSL-LX507E3 SERIES – T5mm, Elliptical Radial Ledged LED								
SSL-LX507E3SIC-11	Super Intensity Red	636	AlInGaP	450	35/70	2.0	-	2
SSL-LX507E3SOC-11	Super Orange	610	AlInGaP	620	35/70	2.0	-	2
SSL-LX507E3SYC-11	Super Yellow	590	AlInGaP	580	35/70	2.0	-	2
SSL-LX507E3UPGC-11	Ultra Pure Green	525	InGaN/SiC	1000	35/70	3.7	-	2
SSL-LX507E3USBC-11	Ultra Super Blue	470	InGaN/SiC	400	35/70	3.5	-	2
SSL-LX100133 SERIES – T10mm, Dome Clear Radial Ledged LED								
SSL-LX100133SIC	Super Intensity Red	636	AlInGaP	3200	30	2.0	-	3
SSL-LX100133SOC	Super Orange	610	AlInGaP	3200	30	2.0	-	3
SSL-LX100133SPGC	Super Pure Green	562	AlInGaP	2000	30	2.0	-	3
SSL-LX100133SYC	Super Yellow	590	AlInGaP	3200	30	2.0	-	3
SSL-LX100133USBC	Ultra Super Blue	470	InGaN/SiC	2000	30	3.5	-	3
Full-Color Option								
SSL-LX100133SISPGU	Super Intensity Red Super Pure Green Ultra Super Blue	636 562 470	AlInGaP AlInGaP InGaN/SiC	900 800 900	30	1.7 3.5 3.5	Anode	-



Mouser Electronics

Authorized Distributor

Click to View Pricing, Inventory, Delivery & Lifecycle Information:

Lumex:

[SSL-LX507E3SYC-11](#)