

UNCONTROLLED DOCUMENT

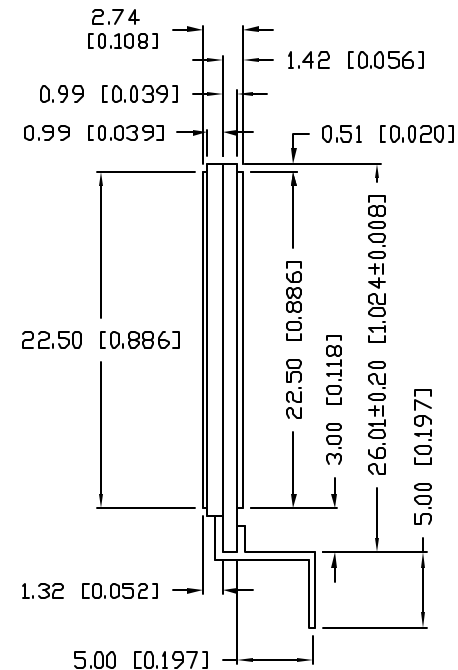
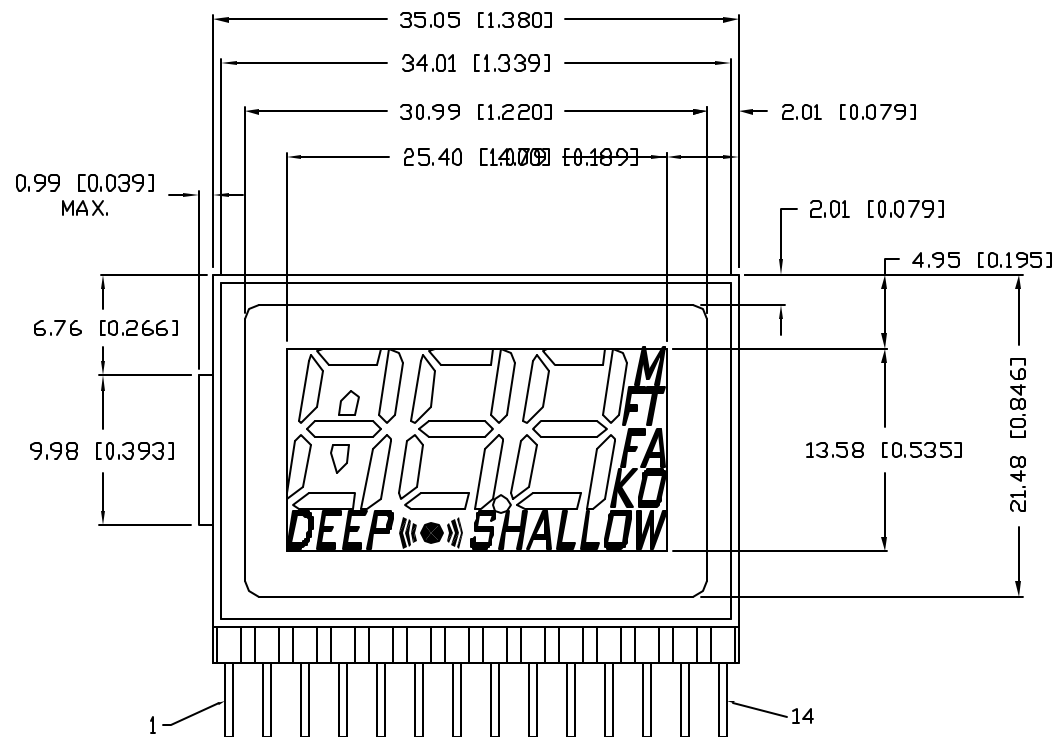
PART NUMBER

LCD-H301M43TF-1

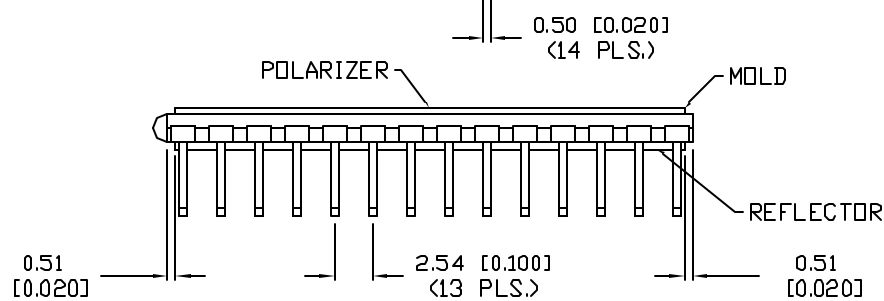
REV.

A

REV.	E.C.N. NUMBER AND REVISION COMMENTS	DATE
A	E.C.N. #11148.	02.06.07



CHARACTERISTICS	
FLUID TYPE:	TN, POSITIVE
BACKGROUND COLOR:	GRAY
VIEWING DIRECTION:	12:00
DISPLAY MODE:	TRANSFLECTIVE
OPERATING VOLTAGE:	5.0V A.C.
OPERATING TEMP.	-10°C TO 85°C
STORAGE TEMP.	-10°C TO 85°C
DRIVING METHOD:	1/3 DUTY
CONNECTION TYPE:	14 PINS



REPLACES PART #: LCD-2513L41T3PX

\*UNLESS OTHERWISE SPECIFIED TOLERANCES PER DECIMAL PRECISION ARE: X=±1 (±0.039), X.X=±0.5 (±0.020), X.XX=±0.25 (±0.010), X.XXX=±0.127 (±0.005). LEAD SIZE=±0.05 (±0.002), LEAD LENGTH=±0.75 (±0.030). MIN.=+RECAL PRECISION  
-0.00 MAX.=+0.00  
-0.00

NOTES:

PIN#	1	2	3	4	5	6	7	8	9	10	11	12	13	14
SEG	COM	/	/	1F	/	1A	1B	2F	2A	2B	3F	3A	3B	M
SEG	/	COM	/	1E	/	1G	1C	2E	2G	2C	3E	3G	3C	FT
SEG	/	/	COM	DP)))	1H,1I	1D	●	/	2D	DEC	SH(((	3D	KD	FA

UNCONTROLLED DOCUMENT

REV.

A

PART NUMBER

LCD-H301M43TF-1

CONFIDENTIAL INFORMATION

THE INFORMATION CONTAINED IN THIS DOCUMENT IS THE PROPERTY OF LUMEX INC. EXCEPT AS SPECIFICALLY AUTHORIZED IN WRITING BY LUMEX INC., THE HOLDER OF THIS DOCUMENT SHALL KEEP ALL INFORMATION CONTAINED HEREIN CONFIDENTIAL AND SHALL PROTECT SAME IN WHOLE OR IN PART FROM DISCLOSURE AND DISSEMINATION TO ALL THIRD PARTIES.

RELIABILITY NOTE

OUR MANY YEARS OF EXPERIENCE DATA ACCUMULATION INDICATE THAT  
SOLDER HEAT IS A MAJOR CAUSE OF EARLY AND FUTURE FAILURE.  
PLEASE PAY ATTENTION TO YOUR SOLDERING PROCESS.



290 E. HELEN ROAD  
PALATINE, IL 60067-6976  
PHONE: +1.847.359.2790  
US WEB: [www.lumex.com](http://www.lumex.com)  
TW WEB: [www.lumex.com.tw](http://www.lumex.com.tw)

DRAWN BY:

CHECKED BY:

APPROVED BY:

DATE: 11.19.98

CUSTOM LCD GLASS, TRANSFLECTIVE.

JC

PAGE: 1 OF 1  
SCALE: N/A

# Mouser Electronics

Authorized Distributor

Click to View Pricing, Inventory, Delivery & Lifecycle Information:

Lumex:

[LCD-H301M43TF-1](#)