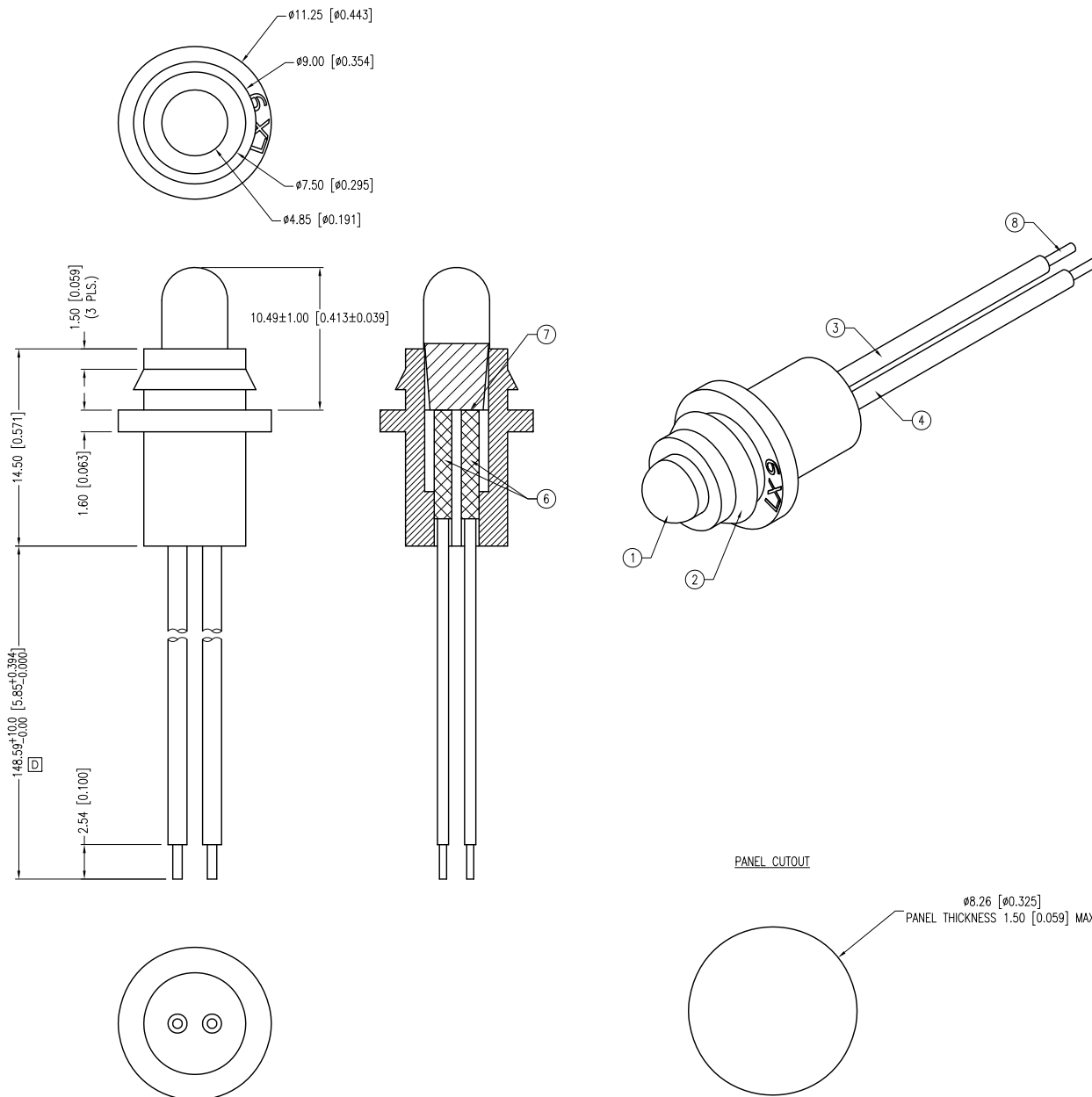


PART NUMBER	SSI-LXH9UPGCD40587	REV.	D
DATE	E.C.N. NUMBER AND REVISION COMMENTS		REV.
07.10.99	E.C.N. #11592.		A
10.22.09	E.C.N. #11593.		B
10.28.09	E.C.N. #11595.		C
10.05.12	E.C.N. #11838.		D

ELECTRO-OPTICAL CHARACTERISTICS  $T_a=25^{\circ}\text{C}$   $I_f=20\text{mA}$ 

PARAMETER	MIN	TYP	MAX	UNITS	TEST COND
PEAK WAVELENGTH		525		nm	
FORWARD VOLTAGE		3.7	4.1	Vf	
REVERSE VOLTAGE	5.0			Vr	$I_r=100\mu\text{A}$
AXIAL INTENSITY		14,000		md	$I_f=20\text{mA}$
VIEWING ANGLE		30		2x theta	
EMITTED COLOR:	GREEN				
LENS FINISH:	WATER CLEAR				

LIMITS OF SAFE OPERATION AT  $25^{\circ}\text{C}$ 

PARAMETER	MAX	UNITS
PEAK FORWARD CURRENT*	150	mA
STEADY CURRENT	30	mA
POWER DISSIPATION	120	mW
DERATE FROM $25^{\circ}\text{C}$	-1.2	mW/ $^{\circ}\text{C}$
OPERATING TEMP.	-40 TO +85	$^{\circ}\text{C}$
STORAGE TEMP.	-40 TO +85	$^{\circ}\text{C}$

\*  $t < 10\mu\text{s}$ 

## D C B A NOTES:

1. SSL-LX509F3UPGC/D, GREEN LED.
2. SSH-LXH9, BLACK HOUSING.
3. ANODE LEAD: LXP-WST26GRTOC, 26 AWG STRANDED, GREEN INSULATION, CUT 155mm LONG, STRIP 2mm & 2.54mm.
4. CATHODE LEAD: LXP-WST26BLTOC, 26 AWG STRANDED, BLACK INSULATION, CUT 155mm LONG, STRIP 2mm & 2.54mm.
5. CRIMP OR SOLDER WIRE LEADS TO LED LEADS.
6. LPX-HEATSHRINK-2, 10mm (2 PCS).
7. LPX-HEATSHRINK-6/2, 7mm.
8. STRIPPED 2.54mm & TIN DIPPED.

## PANEL CUTOUT

$\varnothing 8.26$  [0.325]  
PANEL THICKNESS 1.50 [0.059] MAX.

\*UNLESS OTHERWISE SPECIFIED TOLERANCES PER DECIMAL PRECISION ARE: X=±1 (±0.039), X.X=±0.5 (±0.020), X.XX=±0.25 (±0.010), X.XXX=±0.127 (±0.005). LEAD SIZE=±0.05 (±0.002), LEAD LENGTH=±0.75 (±0.030). MIN=  $^{+0.00}_{-0.00}$  DECIMAL PRECISION MAX.=  $^{+0.00}_{-0.00}$  DECIMAL PRECISION

UNCONTROLLED DOCUMENT

QUASARBRITE T-5mm 525nm GREEN LED PANEL INDICATOR, WATER CLEAR LENS, 6.25" WIRE LEADS.

\*\*THE SPECIFICATIONS MAY CHANGE AT ANY TIME WITHOUT NOTICE DUE TO NEW MATERIALS OR PRODUCT IMPROVEMENT.\*\*

CONFIDENTIAL INFORMATION  
THE INFORMATION CONTAINED IN THIS DOCUMENT IS THE PROPERTY OF LUMEX INC. EXCEPT AS SPECIFICALLY AUTHORIZED IN WRITING BY LUMEX INC., THE HOLDER OF THIS DOCUMENT SHALL  
KEEP ALL INFORMATION CONTAINED HEREIN CONFIDENTIAL AND SHALL PROTECT SAME IN WHOLE OR IN PART FROM DISCLOSURE AND DISSEMINATION TO ALL THIRD PARTIES.

# Mouser Electronics

Authorized Distributor

Click to View Pricing, Inventory, Delivery & Lifecycle Information:

Lumex:

[SSI-LXH9UPGCD40587](#)