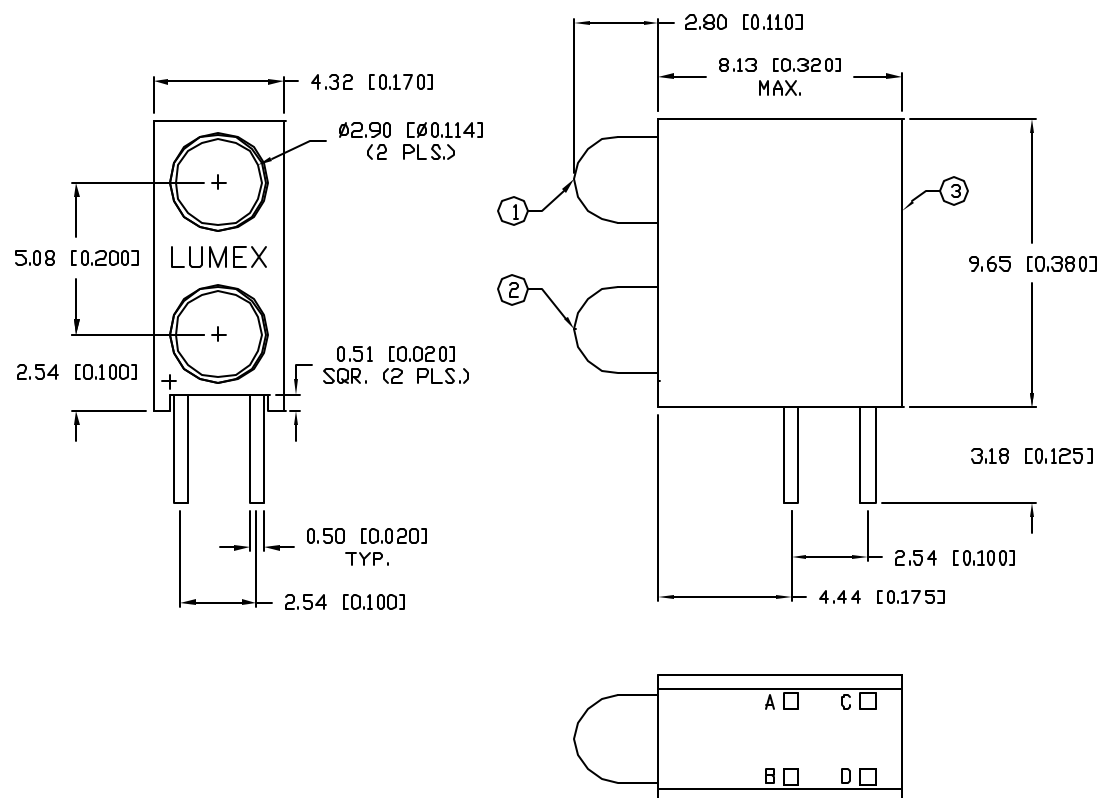


SSF-LXH240IGIYW

PRELIMINARY IN P/N DIR

ELECTRO-OPTICAL CHARACTERISTICS $T_A=25^{\circ}\text{C}$ $I_f=20\text{mA}$

PARAMETER	RED	GREEN	YELLOW	UNITS	TEST COND
PEAK WAVELENGTH	635	565	585	nm	
FORWARD VOLTAGE (TYP.)	2.0	2.2	2.1	V_f	
FORWARD VOLTAGE (MAX.)	2.5	2.6	2.5	V_f	
REVERSE VOLTAGE	5.0	5.0	5.0	V_r	$I_r=100\mu\text{A}$
AXIAL INTENSITY	30	30	30	mcd	$I_f=20\text{mA}$
VIEWING ANGLE	60	60	60	2x theta	
LED POSITION:	1~2	1	2		
EPOXY LENS FINISH: MILKY WHITE DIFFUSED					

LIMITS OF SAFE OPERATION AT 25°C

PARAMETER	COLORS	MAX	UNITS
PEAK FORWARD CURRENT*		150	mA
STEADY CURRENT	(R/G/Y)	30/25/30	mA
POWER DISSIPATION		105	mW
DERATE FROM 25°C		-1.6	mW/ $^{\circ}\text{C}$
OPERATING, STORAGE TEMP.		-40 TO +85	$^{\circ}\text{C}$
SOLDERING TEMP.		+260	$^{\circ}\text{C}$
2.0mm FROM BODY			0 SEC. MAX

* $t < 10\mu\text{s}$

NOTES:

1. SSL-LX3044IGW, R/G BICOLOR LED. (1 PC.)
2. SSL-LX3044IYW, R/Y BICOLOR LED. (1 PC.)
3. SSH-LXH240 HOLDER. MATERIAL: BLACK NYLON 94V-0.

- A. YELLOW ANODE.
- B. RED ANODE.
- C. GREEN ANODE.
- D. RED ANODE.

*UNLESS OTHERWISE SPECIFIED TOLERANCES PER DECIMAL PRECISION ARE: X=±1 (±0.039), XX=±0.5 (±0.020), XXX=±0.25 (±0.010), XXXX=±0.127 (±0.005). LEAD SIZE=±0.05 (±0.002), LEAD LENGTH=±0.75 (±0.030). MIN.=+DECIMAL PRECISION -0.00 MAX.=+0.00 -DECIMAL PRECISION

REV.

PART NUMBER

SSF-LXH240IGIYW

T-3mm (T-1) LED, PIGGY-BACK HOLDER,
POS. 1: BICOLOR RED/GREEN, POS.2: BICOLOR RED/YELLOW,
MILKY WHITE DIFFUSED LENS.

CONFIDENTIAL INFORMATION

THE INFORMATION CONTAINED IN THIS DOCUMENT IS THE PROPERTY OF LUMEX INC. EXCEPT AS SPECIFICALLY AUTHORIZED IN WRITING BY LUMEX INC., THE HOLDER OF THIS DOCUMENT SHALL KEEP ALL INFORMATION CONTAINED HEREIN CONFIDENTIAL AND SHALL PROTECT SAME IN WHOLE OR IN PART FROM DISCLOSURE AND DISSEMINATION TO ALL THIRD PARTIES.

RELIABILITY NOTE

OUR MANY YEARS OF EXPERIENCE DATA ACCUMULATION INDICATE THAT SOLDER HEAT IS A MAJOR CAUSE OF EARLY AND FUTURE FAILURE. PLEASE PAY ATTENTION TO YOUR SOLDERING PROCESS.



290 E. HELEN ROAD
PALATINE, IL 60067-6976
PHONE: +1.847.359.2790
US WEB: www.lumex.com
TW WEB: www.lumex.com.tw

DRAWN BY:

CHECKED BY:

APPROVED BY:

DATE: 9.17.02

PAGE: 1 OF 1

SCALE: N/A

CT

Mouser Electronics

Authorized Distributor

Click to View Pricing, Inventory, Delivery & Lifecycle Information:

Lumex:

[SSF-LXH240IGIYW](#)