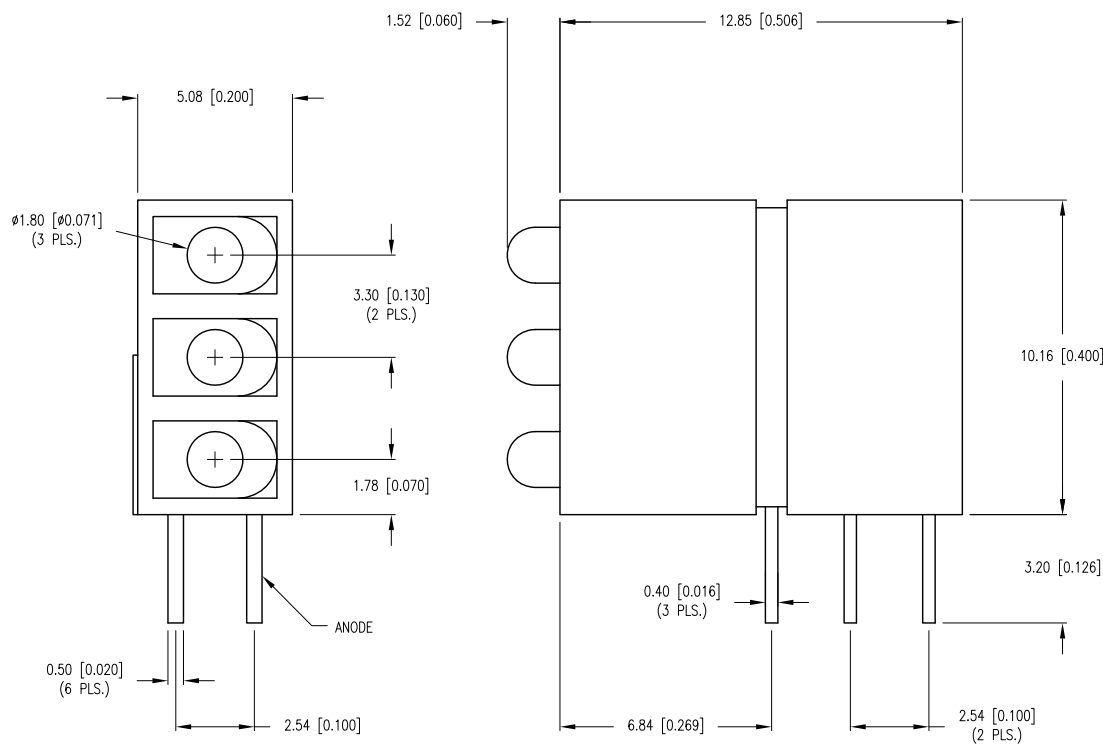


PART NUMBER	SSF-LXH513SI2SUGRP	REV.	B
DATE	E.C.N. NUMBER AND REVISION COMMENTS		REV.
02.14.13	E.C.N. #10BRDR. & REDRAWN/ E.C.N. #11851.		A
12.19.13	E.C.N. #11891.		B



ELECTRO-OPTICAL CHARACTERISTICS Ta=25°C If=20mA				
PARAMETER	RED	GREEN	UNITS	TEST COND
PEAK WAVELENGTH	636	574	nm	
FORWARD VOLTAGE (TYP.)	2.0	2.2	Vf	
FORWARD VOLTAGE (MAX.)	2.5	2.6	Vf	
REVERSE VOLTAGE (TYP.)	5.0	5.0	Vr	Ir=100µA
AXIAL INTENSITY (TYP.)	20	20	mcd	If=20mA
VIEWING ANGLE	70	70	2x theta	
LED POSITION:	1	2,3		
LENS FINISH:				

LIMITS OF SAFE OPERATION AT 25°C		
PARAMETER	MAX	UNITS
PEAK FORWARD CURRENT*	150	mA
STEADY CURRENT (R/G)	30/25	mA
POWER DISSIPATION	105	mW
DERATE FROM 25°C	-1.6	mW/°C
OPERATING TEMP.	-40 TO +85	°C
STORAGE TEMP.	-40 TO +85	°C
SOLDERING TEMP.	+260	°C
2.0mm FROM BODY	3	SEC.

\* t&lt;10µs

\*UNLESS OTHERWISE SPECIFIED TOLERANCES PER DECIMAL PRECISION ARE: X=±1 (±0.039), X.X=±0.5 (±0.020), X.XX=±0.25 (±0.010), X.XXX=±0.127 (±0.005). LEAD SIZE=±0.05 (±0.002), LEAD LENGTH=±0.75 (±0.030). MIN= <sup>+DECIMAL PRECISION</sup> -0.00 <sup>-DECIMAL PRECISION</sup> MAX= <sup>+DECIMAL PRECISION</sup> -0.00 <sup>-DECIMAL PRECISION</sup>

UNCONTROLLED DOCUMENT

T-1.8mm LED RIGHT ANGLE THREE HIGH, FAULT INDICATOR, POS. 1: RED POS.2,3: GREEN, EMITTED COLOR DIFF.

\*\*THE SPECIFICATIONS MAY CHANGE AT ANY TIME WITHOUT NOTICE DUE TO NEW MATERIALS OR PRODUCT IMPROVEMENT.\*\*

CONFIDENTIAL INFORMATION  
THE INFORMATION CONTAINED IN THIS DOCUMENT IS THE PROPERTY OF LUMEX INC. EXCEPT AS SPECIFICALLY AUTHORIZED IN WRITING BY LUMEX INC., THE HOLDER OF THIS DOCUMENT SHALL  
KEEP ALL INFORMATION CONTAINED HEREIN CONFIDENTIAL AND SHALL PROTECT SAME IN WHOLE OR IN PART FROM DISCLOSURE AND DISSEMINATION TO ALL THIRD PARTIES.

# Mouser Electronics

Authorized Distributor

Click to View Pricing, Inventory, Delivery & Lifecycle Information:

Lumex:

[SSF-LXH513SI2SUGRP](#)