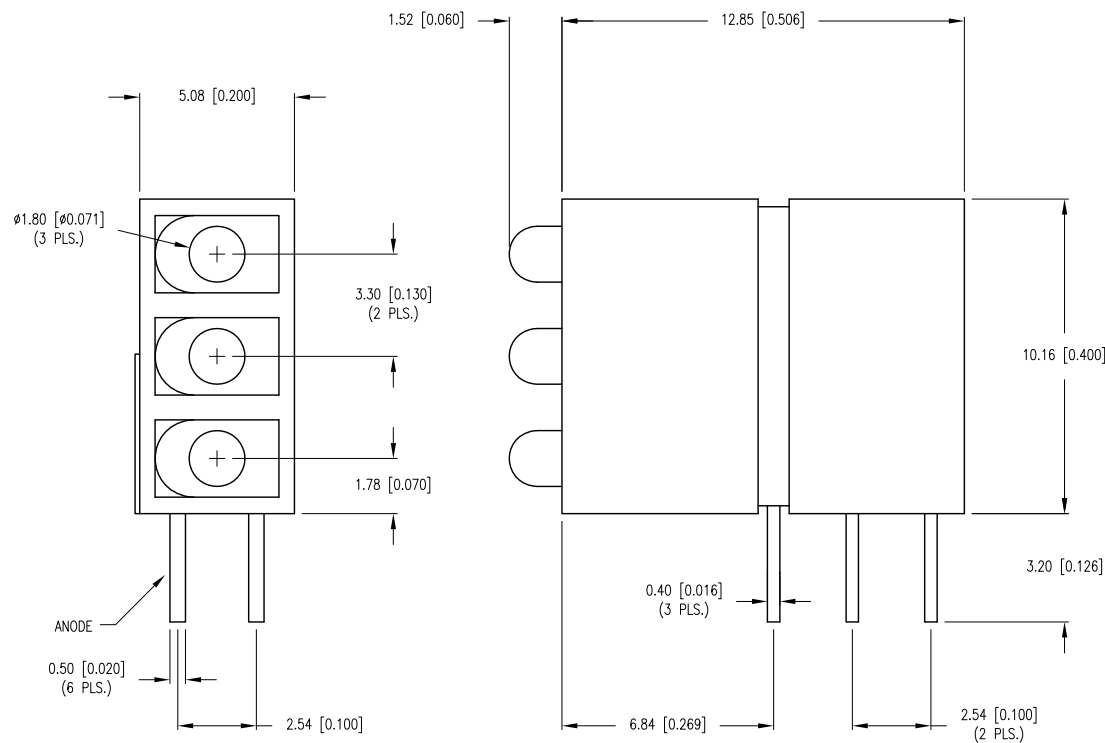


PART NUMBER	SSF-LXH513-Q39737	REV.	B
DATE	E.C.N. NUMBER AND REVISION COMMENTS		REV.
05.09.08	E.C.N. #11502.		A
02.12.13	E.C.N. #10BRDR. & REDRAWN/ E.C.N. #11851.		B



## ELECTRO-OPTICAL CHARACTERISTICS Ta=25°C If=20mA

PARAMETER	RED	GREEN	BLUE	UNITS	TEST COND
PEAK WAVELENGTH	636	574	470	nm	
FORWARD VOLTAGE (TYP.)	2.0	2.2	3.5	Vf	
FORWARD VOLTAGE (MAX.)	2.5	2.6	4.0	Vf	
REVERSE VOLTAGE (TYP.)	5.0	5.0	5.0	Vr	Ir=100μA
AXIAL INTENSITY (TYP.)	380	65	110	mcd	If=20mA
VIEWING ANGLE	70	70	70	2x theta	
LED POSITION:	1	2	3		
LENS FINISH:	DIFFUSED SAME AS EMITTED COLOR				

## LIMITS OF SAFE OPERATION AT 25°C

PARAMETER	MAX	UNITS
PEAK FORWARD CURRENT*	150	mA
STEADY CURRENT (R/G/B)	30/25/30	mA
POWER DISSIPATION	105	mW
DERATE FROM 25°C	-1.6	mW/°C
OPERATING TEMP.	-40 TO +85	°C
STORAGE TEMP.	-40 TO +85	°C
SOLDERING TEMP.	+260	°C
2.0mm FROM BODY	3	SEC.

\* t&lt;10μs

\*UNLESS OTHERWISE SPECIFIED TOLERANCES PER DECIMAL PRECISION ARE: X=±1 (±0.039), X.X=±0.5 (±0.020), X.XX=±0.25 (±0.010), X.XXX=±0.127 (±0.005). LEAD SIZE=±0.05 (±0.002), LEAD LENGTH=±0.75 (±0.030). MIN.=<sup>+DECIMAL PRECISION</sup><sub>-0.00</sub> MAX.=<sup>+0.00</sup><sub>-DECIMAL PRECISION</sub>

UNCONTROLLED DOCUMENT



290 E. HELEN ROAD  
PALATINE, IL 60067-6976  
PHONE: +1.847.359.2790  
FAX: +1.847.359.6538  
WEB: WWW.LUMEX.COM  
MEMBER OF ITW PHOTONICS GROUP

T-1.8mmLED RIGHT ANGLE 3 HIGH,FAULT INDICATOR,POS.1:R,POS.2:G,POS.3:B,EMITTED COLOR DIFF,REVERSE POLARITY.

\*\*THE SPECIFICATIONS MAY CHANGE AT ANY TIME WITHOUT NOTICE DUE TO NEW MATERIALS OR PRODUCT IMPROVEMENT.\*\*

## CONFIDENTIAL INFORMATION

THE INFORMATION CONTAINED IN THIS DOCUMENT IS THE PROPERTY OF LUMEX INC. EXCEPT AS SPECIFICALLY AUTHORIZED IN WRITING BY LUMEX INC., THE HOLDER OF THIS DOCUMENT SHALL KEEP ALL INFORMATION CONTAINED HEREIN CONFIDENTIAL AND SHALL PROTECT SAME IN WHOLE OR IN PART FROM DISCLOSURE AND DISSEMINATION TO ALL THIRD PARTIES.

DATE:	02.14.13	DRAWN BY:	MA
PAGE:	1 OF 1	CHKD BY:	KF
SCALE:	NTS	APRVD BY:	KF
UNIT:	mm [INCH]		Ⓟ

# Mouser Electronics

Authorized Distributor

Click to View Pricing, Inventory, Delivery & Lifecycle Information:

Lumex:

[SSF-LXH513-Q39737](#)