

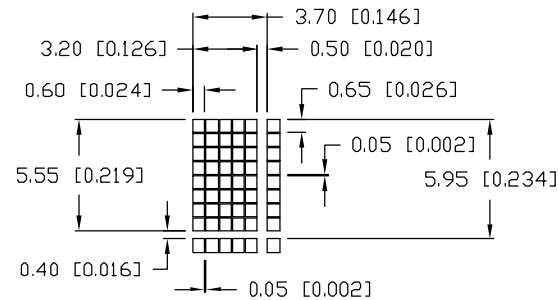
PART NUMBER
LCM-S04002DSF-Y1P

REV.

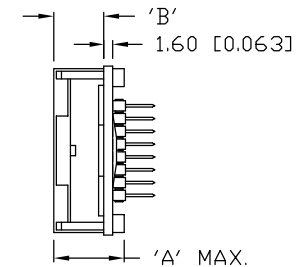
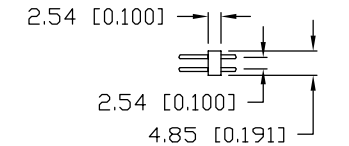
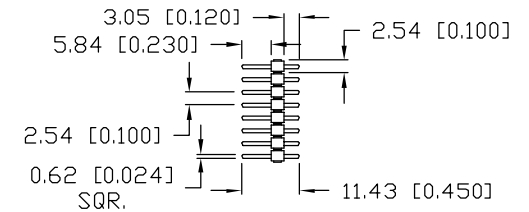
A

REV.	E.C.N. NUMBER AND REVISION COMMENTS	DATE
A	E.C.N. #10BRDR. & REDRAWN.	9-25-98

CHARACTER DETAIL



PIN DETAIL



TYPE	DIM.	A	B
WITH BACKLIGHT		12.7	8.7
NO BACKLIGHT		8.8	4.7

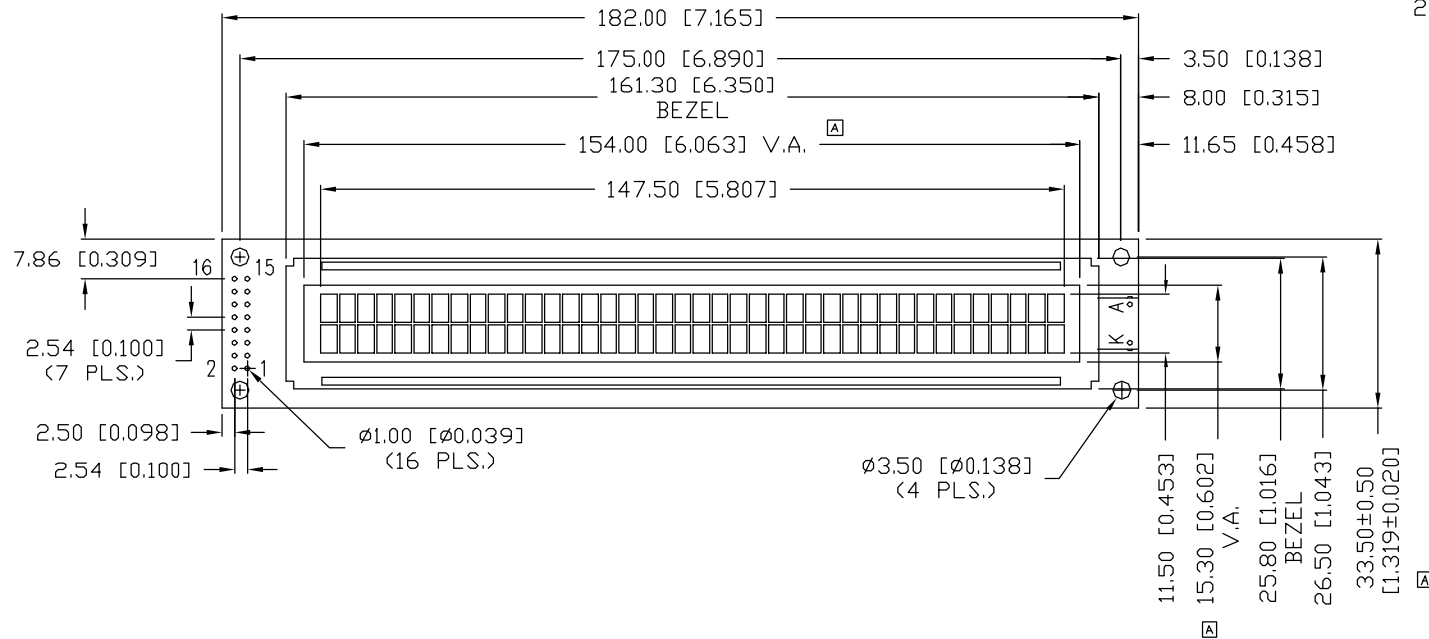
A

*UNLESS OTHERWISE SPECIFIED TOLERANCE IS $\pm 0.25\text{mm}$ ($\pm 0.010''$)

CAUTION: STATIC SENSITIVE DEVICE
FOLLOW PROPER E.S.D. HANDLING PROCEDURES
WHEN WORKING WITH THIS PART.

NOTES:

1. 8 x 2 HEADER PINS.
2. 0.000030" GOLD PLATED.
3. BERG P/N 67997-516 OR EQUIVALENT.



REV.

A

PART NUMBER

LCM-S04002DSF-Y1P

5.55mm CHARACTER HEIGHT, 5 x 8 DOT MATRIX,
40 x 2 CHARACTER LCD MODULE, STN YELLOW,
1/16 DUTY, 1/5 BIAS, 12:00 VIEW, WITH PINS.

CONFIDENTIAL INFORMATION

THE INFORMATION CONTAINED IN THIS DOCUMENT IS THE PROPERTY OF LUMEX INC. EXCEPT AS SPECIFICALLY AUTHORIZED IN WRITING BY LUMEX INC., THE HOLDER OF THIS DOCUMENT SHALL KEEP ALL INFORMATION CONTAINED HEREIN CONFIDENTIAL AND SHALL PROTECT SAME IN WHOLE OR IN PART FROM DISCLOSURE AND DISSEMINATION TO ALL THIRD PARTIES.

RELIABILITY NOTE

OUR MANY YEARS OF EXPERIENCE DATA ACCUMULATION INDICATE THAT SOLDER HEAT IS A MAJOR CAUSE OF EARLY AND FUTURE FAILURE. PLEASE PAY ATTENTION TO YOUR SOLDERING PROCESS.

LUMEX
INCORPORATED

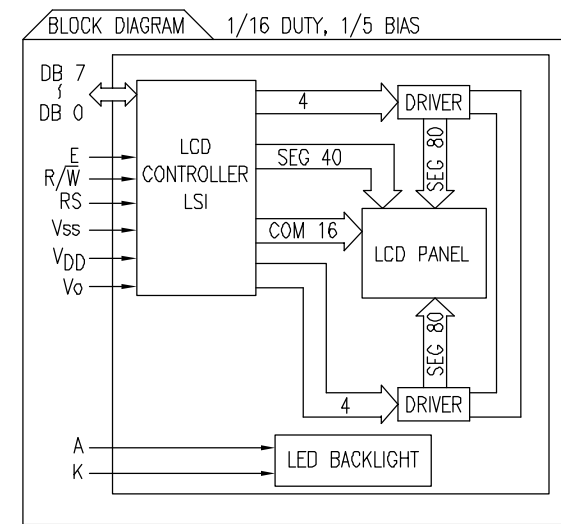
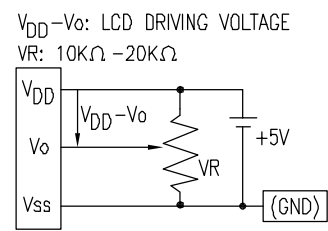
290 E. HELLEN ROAD
PALATINE, ILLINOIS 60067
PHONE: 1-847-359-2790
WEB: HTTP://WWW.LUMEX.COM

A

DRAWN BY:	CHECKED BY:	APPROVED BY:	DATE: 4-7-98
DU/BC			PAGE: 1 OF 2
			SCALE: N/A

PART NUMBER		REV.
LCM-S04002DSF-Y1P		A
REV.	E.C.N. NUMBER AND REVISION COMMENTS	DATE
A	E.C.N. #10BRDR. & REDRAWN.	12-31-99

PIN CONFIGURATION				
PIN NO.	SYMBOL	LEVEL	FUNCTION	
1	Vss	-	POWER SUPPLY	GND (0V)
2	VDD	-		5V
3	Vo	-		FOR LCD DRIVE
4	RS	H/L	REGISTER SELECT SIGNAL H: DATA INPUT L: INSTRUCTION INPUT	
5	R/W	H/L	H: DATA READ (MODULE-->MPU) L: DATA WRITE (MODULE<--MPU)	
6	E	H,H->L	ENABLE	
7~14	DB0~DB7	H/L	DATA BUS-SOFTWARE SELECTABLE 4 OR 8 BIT MODE.	
15	A	-	ANODE	LED BACKLIGHT
16	K	-	CATHODE	LED BACKLIGHT



ELECTRICAL CHARACTERISTICS						$V_{DD}=4.7V$ to $5.3V$, $T_A=25^{\circ}C$	
ITEM		SYMBOL	CONDITION	STANDARD VALUE			UNIT
SUPPLY VOLTAGE FOR LOGIC		$V_{DD}-V_{ss}$	-	MIN.	TYP.	MAX.	V
SUPPLY CURRENT FOR LOGIC		I_{DD}	$V_{DD}=5V$	-	2.0	3.0	mA
INPUT VOLTAGE	HIGH	V_{IH}	-	2.2	-	4.7	V
	LOW	V_{IL}	-	0	-	0.6	V
OUTPUT VOLTAGE	HIGH	V_{OH}	$I_{OH}=-0.205mA$	2.4	-	-	V
	LOW	V_{OL}	$I_{OL}=1.6ma$	-	-	0.4	V
*LED BACKLIGHT	VOLTAGE	V_f	-	-	4.2	4.6	V
	CURRENT	I_f	-	-	210	-	mA
	POWER CONSUMPTION	PD	-	-	882	-	mW
	LUMINOUS	L	$I_f=210mA$	70	-	-	cd/m ²
	COLOR	-	-	-	-	-	nm

*ONLY APPLIES TO MODULES WITH BACKLIGHT

ABSOLUTE MAXIMUM RATINGS					
ITEM	SYMBOL	TEST CONDITION	STANDARD VALUE		UNIT
SUPPLY VOLTAGE FOR LOGIC	$V_{DD}-V_{ss}$	$T_a=25^{\circ}C$	4.7	5.3	V
SUPPLY VOLTAGE FOR LCD DRIVE	$V_{DD}-V_o$	-	4.2@50°C	4.8@0°C	V
INPUT VOLTAGE	V_i	$T_a=25^{\circ}C$	V_{ss}	V_{DD}	V
OPERATING TEMPERATURE	T_{opr}	LCM-S	0	50	°C
STORAGE TEMPERATURE	T_{stg}	LCM-S	-20	70	°C

*UNLESS OTHERWISE SPECIFIED TOLERANCE IS $\pm 0.25mm$ ($\pm 0.010"$)

REV.	PART NUMBER	CONFIDENTIAL INFORMATION		290 E. HELLEN ROAD	
A	LCM-S04002DSF-Y1P	THE INFORMATION CONTAINED IN THIS DOCUMENT IS THE PROPERTY OF LUMEX INC. EXCEPT AS SPECIFICALLY AUTHORIZED IN WRITING BY LUMEX INC., THE HOLDER OF THIS DOCUMENT SHALL KEEP ALL INFORMATION CONTAINED HEREIN CONFIDENTIAL AND SHALL PROTECT SAME IN WHOLE OR IN PART FROM DISCLOSURE AND DISSEMINATION TO ALL THIRD PARTIES.		PALATINE, ILLINOIS 60067	
5.55mm CHARACTER HEIGHT, 5 x 8 DOT MATRIX, 40 x 2 CHARACTER LCD MODULE, STN YELLOW, 1/16 DUTY, 1/5 BIAS, 12:00 VIEW, WITH PINS.		RELIABILITY NOTE		PHONE: 1-847-359-2790	
		OUR MANY YEARS OF EXPERIENCE DATA ACCUMULATION INDICATE THAT SOLDER HEAT IS A MAJOR CAUSE OF EARLY AND FUTURE FAILURE. PLEASE PAY ATTENTION TO YOUR SOLDERING PROCESS.		WEB: HTTP://WWW.LUMEX.COM	
		DRAWN BY:	CHECKED BY:	APPROVED BY:	DATE: 4-7-98
		DU/BC			PAGE: 2 OF 2
					SCALE: N/A

Mouser Electronics

Authorized Distributor

Click to View Pricing, Inventory, Delivery & Lifecycle Information:

Lumex:

[LCM-S04002DSF-Y1P](#)