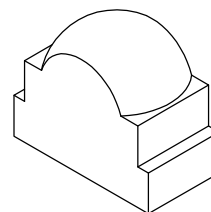
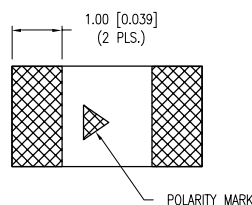
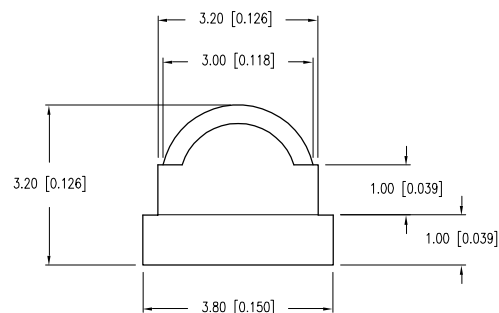
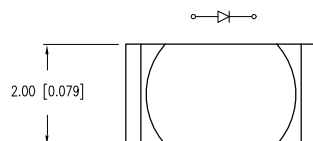


PART NUMBER	SML-LXL238UWC-TR	REV.	B
DATE	E.C.N. NUMBER AND REVISION COMMENTS		REV.
03.14.03	E.C.N. #11967.		A
05.25.10	E.C.N. #11508.		B

ELECTRO-OPTICAL CHARACTERISTICS $T_A=25^\circ\text{C}$

PARAMETER	MIN	TYP	MAX	UNITS	TEST COND
PEAK WAVELENGTH		—		nm	
FORWARD VOLTAGE		3.6	4.0	V_f	$I_f=20\text{mA}$
REVERSE VOLTAGE	5.0			V_r	$I_r=20\text{mA}$
AXIAL INTENSITY (*)		380		mcd	$I_f=20\text{mA}$
CHROMACITY X		0.33			
COORDINATES (**) Y		0.34			$I_f=20\text{mA}$
VIEWING ANGLE X		60		2x theta	
VIEWING ANGLE Y		35		2x theta	
EMITTED COLOR:	WHITE				
EPOXY LENS FINISH:	WATER CLEAR				

*. AXIAL INTENSITY TESTING CONDITION: 550nm WAVELENGTH.

**. THE ICI STANDARD COLORIMETRIC SYSTEM.

LIMITS OF SAFE OPERATION AT 25°C

PARAMETER	SYMBOL	MAX	UNITS
PULSE FORWARD CURRENT	I_p	180*	mA
STEADY CURRENT	I_f	30	mA
POWER DISSIPATION	P_D	105	mW
OPERATING TEMP.	T_{OPR}	-30 TO +80	$^\circ\text{C}$
STORAGE TEMP.	T_{STG}	-40 TO +100	$^\circ\text{C}$
SOLDERING TEMP.		+260	$^\circ\text{C}$
2.0mm FROM BODY			3 SEC. MAX

*DUTY 1/10 PULSE WIDTH 10ms

CAUTION: STATIC SENSITIVE DEVICE
FOLLOW PROPER E.S.D. HANDLING PROCEDURES
WHEN WORKING WITH THIS PART.

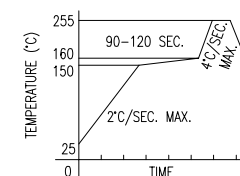
B/A CAUTION: MOISTURE SENSITIVE DEVICE
PER JEDEC LEVEL 3 STANDARDS

NOTES:

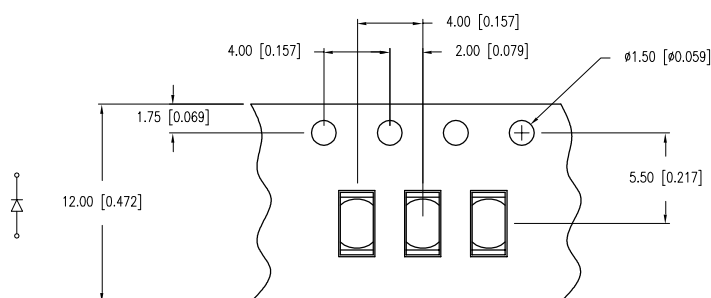
1. THE CATHODE IS ORIENTED TOWARDS THE TAPE SPROCKET HOLE.

LEAD FREE REFLOW PROFILE

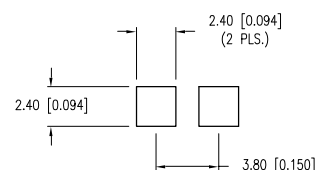
10 SEC. MAX.

TOTAL TIME ABOVE 220°C IS 60 SECONDS MAX.

TAPE SPEC



RECOMMENDED SOLDER PAD LAYOUT

*UNLESS OTHERWISE SPECIFIED TOLERANCES PER DECIMAL PRECISION ARE: $x=\pm 1$ (± 0.039), $x.x=\pm 0.5$ (± 0.020), $x.xx=\pm 0.25$ (± 0.010), $x.xxx=\pm 0.127$ (± 0.005). LEAD SIZE= ± 0.05 (± 0.002), LEAD LENGTH= ± 0.75 (± 0.030). MIN=+DECIMAL PRECISION
-0.00
MAX.=+0.00
-DECIMAL PRECISION

LUMEX
Creating LED and LCD Solutions Together™

290 E. HELEN ROAD
PALATINE, IL 60067-6976
PHONE: +1.847.359.2790
FAX: +1.847.359.6538
WEB: WWW.LUMEX.COM

3.8mm x 2.0mm SMT LED, ULTRA WHITE, WATER CLEAR DOME LENS.

THE SPECIFICATIONS MAY CHANGE AT ANY TIME WITHOUT NOTICE DUE TO NEW MATERIALS OR PRODUCT IMPROVEMENT.

CONFIDENTIAL INFORMATION
THE INFORMATION CONTAINED IN THIS DOCUMENT IS THE PROPERTY OF LUMEX INC. EXCEPT AS SPECIFICALLY AUTHORIZED IN WRITING BY LUMEX INC., THE HOLDER OF THIS DOCUMENT SHALL
KEEP ALL INFORMATION CONTAINED HEREIN CONFIDENTIAL AND SHALL PROTECT SAME IN WHOLE OR IN PART FROM DISCLOSURE AND DISSEMINATION TO ALL THIRD PARTIES.

DATE: 08.20.02	DRAWN BY: GB
PAGE: 1 OF 1	CHKD BY: SS
SCALE: N/A	APRVD BY: JD
UNIT: mm [INCH]	(R)

UNCONTROLLED DOCUMENT

Mouser Electronics

Authorized Distributor

Click to View Pricing, Inventory, Delivery & Lifecycle Information:

Lumex:

[SML-LXL238UWC-TR](#)