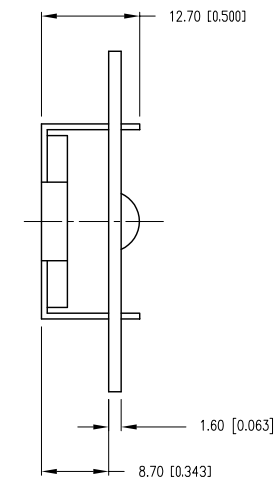


1. VIEWING DIRECTION: 12:00.

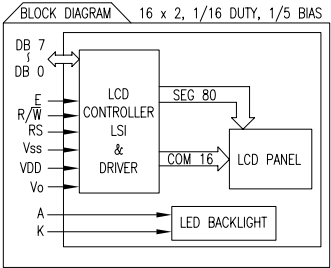
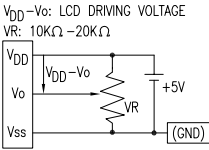


UNCONTROLLED DOCUMENT



PART NUMBER	LCM-H01602DSF/A-1A	REV.	B
DATE	E.C.N. NUMBER AND REVISION COMMENTS		REV.
04.18.07	E.C.N. #11148.		A
12.08.11	E.C.N. #11778 & 10BRDR.		B

PIN CONFIGURATION			
PIN NO.	SYMBOL	LEVEL	FUNCTION
1	Vss	—	POWER SUPPLY
2	VDD	—	
3	Vo	—	
4	RS	H/L	REGISTER SELECT SIGNAL H: DATA INPUT L: INSTRUCTION INPUT
5	R/W	H/L	H: DATA READ (MODULE-->MPU) L: DATA WRITE (MODULE<--MPU)
6	E	H,H->L	ENABLE
7~14	DB0~DB7	H/L	DATA BUS—SOFTWARE SELECTABLE 4 OR 8 BIT MODE.
15	A	—	ANODE LED BACKLIGHT
16	K	—	CATHODE LED BACKLIGHT



ELECTRICAL CHARACTERISTICS			V <sub>DD</sub> =4.7V to 5.3V, T <sub>A</sub> =25°C				
ITEM		SYMBOL	CONDITION	STANDARD VALUE			UNIT
				MIN.	TYP.	MAX.	
SUPPLY VOLTAGE FOR LOGIC		V <sub>DD</sub> -V <sub>SS</sub>	—	—	5.0	—	V
SUPPLY CURRENT FOR LOGIC		I <sub>DD</sub>	V <sub>DD</sub> =5V	—	2.0	3.0	mA
INPUT VOLTAGE	HIGH	V <sub>IH</sub>	—	2.2	—	V <sub>DD</sub>	V
	LOW	V <sub>IL</sub>	—	0	—	0.6	V
OUTPUT VOLTAGE	HIGH	V <sub>OH</sub>	—	2.4	—	—	V
	LOW	V <sub>OL</sub>	—	—	—	0.4	V
*LED BACKLIGHT	VOLTAGE	V <sub>f</sub>	I <sub>f</sub> =160mA	—	4.2	4.6	V
	CURRENT	I <sub>f</sub>	—	—	160	—	mA
	POWER CONSUMPTION	P <sub>D</sub>	—	—	656	—	mW
	LUMINOUS	L	I <sub>f</sub> =160mA	70	—	—	cd/m <sup>2</sup>
	COLOR	—	—	—	—	—	nm

ABSOLUTE MAXIMUM RATINGS					
ITEM	SYMBOL	TEST CONDITION	STANDARD VALUE		UNIT
SUPPLY VOLTAGE FOR LOGIC	VDD-Vss	Ta=25°C	4.7	5.3	V
SUPPLY VOLTAGE FOR LCD DRIVE	VDD-Vo	—	4.2@50°C	4.8@0°C	V
INPUT VOLTAGE	VI	Ta=25°C	Vss	VDD	V
OPERATING TEMPERATURE	Topr	LCM-H	-20	70	°C
STORAGE TEMPERATURE	Tstg	LCM-H	-30	85	°C

\*UNLESS OTHERWISE SPECIFIED TOLERANCES PER DECIMAL PRECISION ARE: X=±1 (±0.039), X.X=±0.5 (±0.020), X.XX=±0.25 (±0.010), X.XXX=±0.127 (±0.005). LEAD SIZE=±0.05 (±0.002), LEAD LENGTH=±0.75 (±0.030). MIN= <sup>+0.00</sup><sub>-0.00</sub> DECIMAL PRECISION MAX.= <sup>+0.00</sup><sub>-0.00</sub> DECIMAL PRECISION



290 E. HELEN ROAD  
PALATINE, IL 60067-6976  
PHONE: +1.847.359.2790  
FAX: +1.847.359.6538  
WEB: WWW.LUMEX.COM

5.56mm CHAR HEIGHT, BLACK BEZEL, STN, TRANSLFLECTIVE, LED BKLT, 16 x 2 LCD MODULE, 1/16 DUTY 1/5 BIAS.

\*\*THE SPECIFICATIONS MAY CHANGE AT ANY TIME WITHOUT NOTICE DUE TO NEW MATERIALS OR PRODUCT IMPROVEMENT.\*\*

CONFIDENTIAL INFORMATION  
THE INFORMATION CONTAINED IN THIS DOCUMENT IS THE PROPERTY OF LUMEX INC. EXCEPT AS SPECIFICALLY AUTHORIZED IN WRITING BY LUMEX INC., THE HOLDER OF THIS DOCUMENT SHALL  
KEEP ALL INFORMATION CONTAINED HEREIN CONFIDENTIAL AND SHALL PROTECT SAME IN WHOLE OR IN PART FROM DISCLOSURE AND DISSEMINATION TO ALL THIRD PARTIES.

DATE:	12.08.11	DRAWN BY:	AB
PAGE:	2 OF 2	CHKD BY:	KF
SCALE:	NTS	APRVD BY:	DT
UNIT:	mm [INCH]		Ⓟ

# Mouser Electronics

Authorized Distributor

Click to View Pricing, Inventory, Delivery & Lifecycle Information:

Lumex:

[LCM-H01602DSF/A-1A](#)