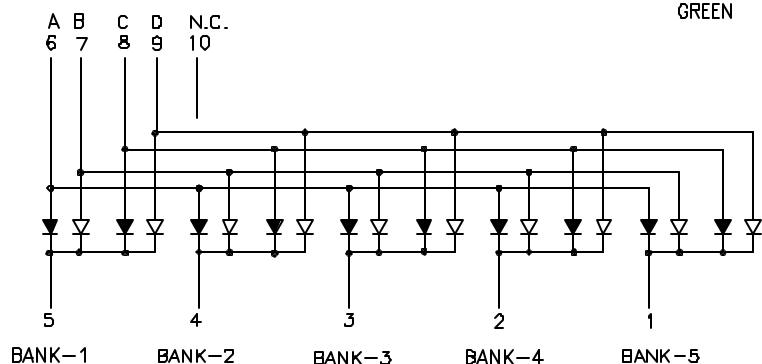
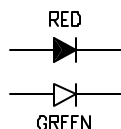
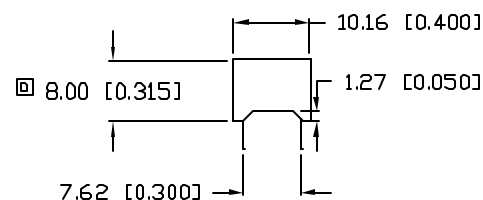
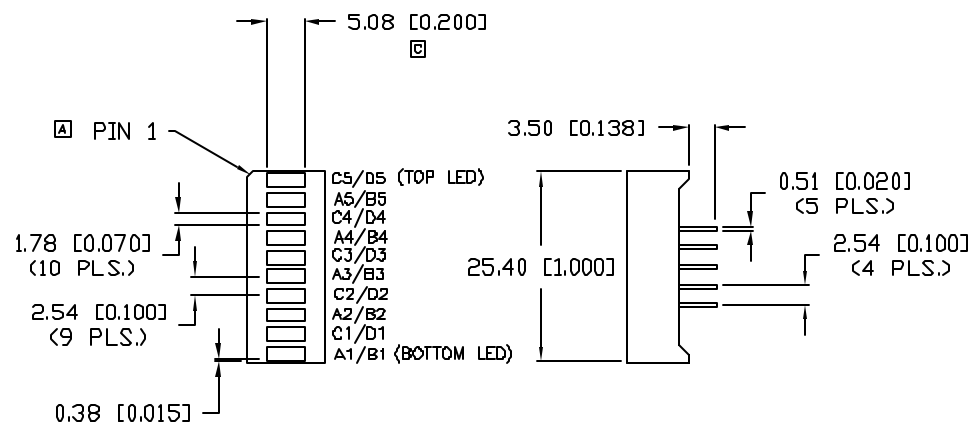


UNCONTROLLED DOCUMENT

PART NUMBER  
SSA-LXB10IGWREV.  
E

\*UNLESS OTHERWISE SPECIFIED TOLERANCES PER DECIMAL PRECISION ARE: X=±1 (±0.038), XX=±0.5 (±0.020), XXX=±0.25 (±0.010), XXXX=±0.127 (±0.005). LEAD SIZE=±0.05 (±0.002), LEAD LENGTH=±0.75 (±0.030), MIN= +DECIMAL PRECISION -0.00, MAX= +0.00 -DECIMAL PRECISION

REV.	E.C.N. NUMBER AND REVISION COMMENTS	DATE
A	FACE COLOR BLACK/CHG'D PIN ORIENTATION	2.24.93
B	CHG'D SAFE OPER.SPEC.	8.15.94
C	CORRECTED DIM/UPDATED SPECS.	5.10.95
D	E.C.N. #10BRDR. & #10391.	10.20.97
E	E.C.N. #11148.	5.30.07

ELECTRO-OPTICAL CHARACTERISTICS T <sub>A</sub> =25°C I <sub>f</sub> =20mA				
PARAMETER	RED	GREEN	UNITS	TEST COND
PEAK WAVELENGTH	635	565	nm	
FORWARD VOLTAGE (TYP.)	2.0	2.5	nm	
FORWARD VOLTAGE (MAX.)	2.2	2.6	V <sub>f</sub>	
REVERSE VOLTAGE	5.0	5.0	V <sub>r</sub>	I <sub>r</sub> =100μA
AXIAL INTENSITY	6	6	mcd	I <sub>f</sub> =20mA
VIEWING ANGLE	80	80	2x theta	
EPOXY LENS FINISH: MILKY WHITE DIFFUSED				
FACE COLOR:	BLACK			

LIMITS OF SAFE OPERATION AT 25°C PER CHIP			
PARAMETER	COLORS	MAX	UNITS
PEAK FORWARD CURRENT*	(R/G)	150/150	mA
STEADY CURRENT	(R/G)	30/25	mA
POWER DISSIPATION	(R/G)	105/105	mW
DERATE FROM 25°C		-1.2	mW/°C
OPERATING, STORAGE TEMP.		-40 TO +85	°C
SOLDERING TEMP.		+260	°C
2.0mm FROM BODY			3 SEC. MAX

\* t&lt;10μs

UNCONTROLLED DOCUMENT

REV.  
EPART NUMBER  
SSA-LXB10IGW10 UNIT, BICOLOR RED/GREEN ARRAY, BLACK FACE,  
WHITE SEGMENTS.

**CONFIDENTIAL INFORMATION**  
THE INFORMATION CONTAINED IN THIS DOCUMENT IS THE PROPERTY OF LUMEX INC. EXCEPT AS SPECIFICALLY AUTHORIZED IN WRITING BY LUMEX INC., THE HOLDER OF THIS DOCUMENT SHALL KEEP ALL INFORMATION CONTAINED HEREIN CONFIDENTIAL AND SHALL PROTECT SAME IN WHOLE OR IN PART FROM DISCLOSURE AND DISSEMINATION TO ALL THIRD PARTIES.

**RELIABILITY NOTE**  
OUR MANY YEARS OF EXPERIENCE DATA ACCUMULATION INDICATE THAT SOLDER HEAT IS A MAJOR CAUSE OF EARLY AND FUTURE FAILURE. PLEASE PAY ATTENTION TO YOUR SOLDERING PROCESS.



290 E. HELEN ROAD  
PALATINE, IL 60067-6976  
PHONE: +1.847.359.2790  
US WEB: www.lumex.com  
TW WEB: www.lumex.com.tw

DRAWN BY:	CHECKED BY:	APPROVED BY:	DATE: 2.22.93
JN			PAGE: 1 OF 1
			SCALE: N/A

# Mouser Electronics

Authorized Distributor

Click to View Pricing, Inventory, Delivery & Lifecycle Information:

Lumex:

[SSA-LXB10IGW](#)