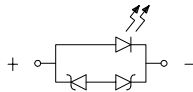
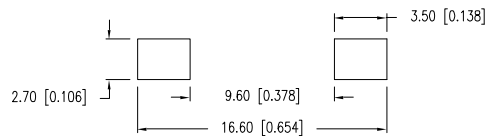


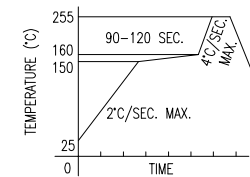
RECOMMENDED SOLDER PAD LAYOUT

ELECTRO-OPTICAL CHARACTERISTICS $T_A = 25^\circ\text{C}$ $I_f = 350\text{mA}$

| PARAMETER | MIN | TYP | MAX | UNITS | TEST COND |
|--------------------|-------------|-----|------|----------|------------------------|
| PEAK WAVELENGTH | | 625 | | nm | |
| FORWARD VOLTAGE | 2.05 | | 2.95 | V_f | $I_f = 350\text{mA}$ |
| REVERSE VOLTAGE | 5.0 | | | V_r | $I_r = 100\mu\text{A}$ |
| AXIAL INTENSITY | 39 | 45 | | lm | $I_f = 350\text{mA}$ |
| VIEWING ANGLE | | 140 | | 2x theta | |
| EMITTED COLOR: | RED | | | | |
| EPOXY LENS FINISH: | WATER CLEAR | | | | |

LIMITS OF SAFE OPERATION AT 25°C

| PARAMETER | MAX | UNITS |
|--------------------------------|-------------|----------------------|
| PEAK FORWARD CURRENT* | 500 | mA |
| STEADY CURRENT | 400 | mA |
| POWER DISSIPATION | 1.0 | mW |
| DERATE FROM 25°C | -1.2 | mW/ $^\circ\text{C}$ |
| OPERATING TEMP. | -40 TO +85 | $^\circ\text{C}$ |
| STORAGE TEMP. | -40 TO +100 | $^\circ\text{C}$ |

* $t < 100\mu\text{s}$, DUTY CYCLE = 0.25LEAD FREE REFLOW PROFILE
10 SEC. MAX.TOTAL TIME ABOVE 220°C IS 60 SECONDS MAX.CAUTION: STATIC SENSITIVE DEVICE
FOLLOW PROPER E.S.D. HANDLING PROCEDURES
WHEN WORKING WITH THIS PART.CAUTION: MOISTURE SENSITIVE DEVICE
PER JEDEC LEVEL 3 STANDARDS

*UNLESS OTHERWISE SPECIFIED TOLERANCES PER DECIMAL PRECISION ARE: X=±1 (±0.039), X.X=±0.5 (±0.020), X.XX=±0.25 (±0.010), X.XXX=±0.127 (±0.005). LEAD SIZE=±0.05 (±0.002), LEAD LENGTH=±0.75 (±0.030). MIN= +DECIMAL PRECISION -0.00 MAX.= +0.00 -DECIMAL PRECISION

LUMEX
 Creating LED and LCD Solutions Together™

 290 E. HELEN ROAD
 PALATINE, IL 60067-6976
 PHONE: +1.847.359.2790
 FAX: +1.847.359.6538
 WEB: WWW.LUMEX.COM

1W HIGH POWER SURFACE MOUNT RED LED, CLEAR LENS.

THE SPECIFICATIONS MAY CHANGE AT ANY TIME WITHOUT NOTICE DUE TO NEW MATERIALS OR PRODUCT IMPROVEMENT.

 CONFIDENTIAL INFORMATION
 THE INFORMATION CONTAINED IN THIS DOCUMENT IS THE PROPERTY OF LUMEX INC. EXCEPT AS SPECIFICALLY AUTHORIZED IN WRITING BY LUMEX INC., THE HOLDER OF THIS DOCUMENT SHALL
 KEEP ALL INFORMATION CONTAINED HEREIN CONFIDENTIAL AND SHALL PROTECT SAME IN WHOLE OR IN PART FROM DISCLOSURE AND DISSEMINATION TO ALL THIRD PARTIES.

 UNCONTROLLED DOCUMENT
 DATE: 02.05.10 DRAWN BY: JN
 PAGE: 1 OF 1 CHKD BY:
 SCALE: N/A APRVD BY: KF
 UNIT: mm [INCH] (R)

Mouser Electronics

Authorized Distributor

Click to View Pricing, Inventory, Delivery & Lifecycle Information:

Lumex:

[SML-LXL705SIC](#)