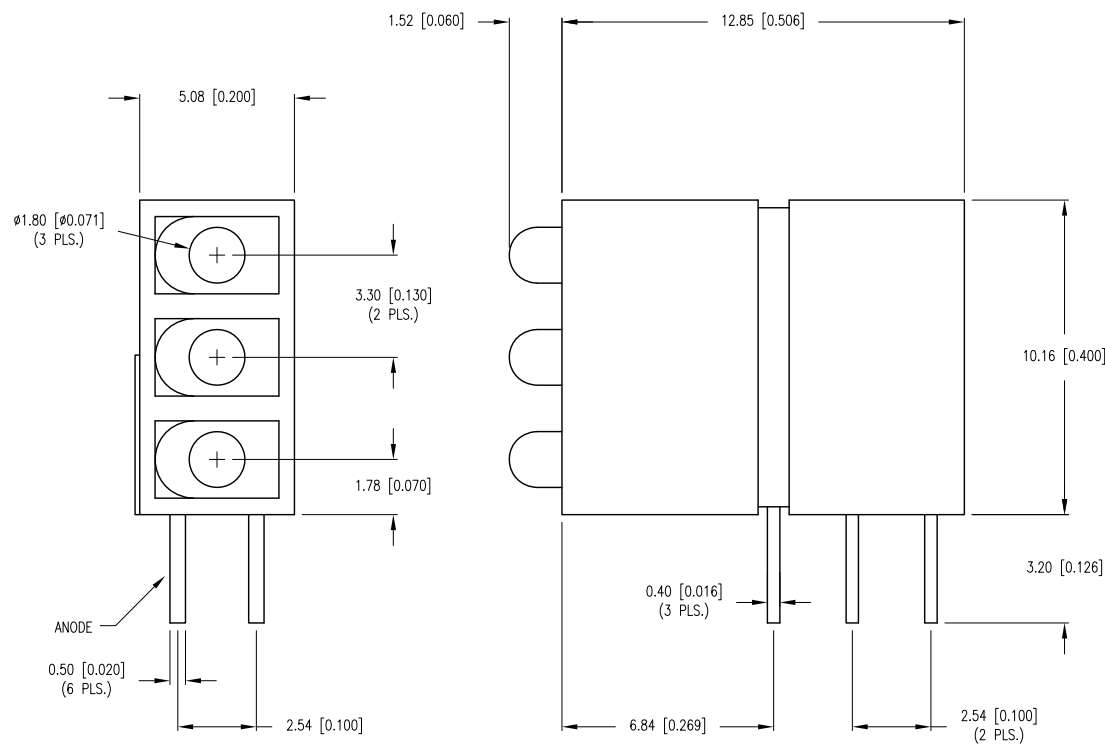


| | | | |
|-------------|---|------|------|
| PART NUMBER | SSF-LXH513IGYD | REV. | A |
| DATE | E.C.N. NUMBER AND REVISION COMMENTS | | REV. |
| 02.04.13 | E.C.N. #10BRDR. & REDRAWN/ E.C.N. #11851. | | A |



| ELECTRO-OPTICAL CHARACTERISTICS Ta=25°C If=20mA | | | | |
|---|--------------------------------|-------|--------|----------|
| PARAMETER | RED | GREEN | YELLOW | UNITS |
| PEAK WAVELENGTH | 635 | 565 | 585 | nm |
| FORWARD VOLTAGE (TYP.) | 2.0 | 2.2 | 2.2 | Vf |
| FORWARD VOLTAGE (MAX.) | 2.5 | 2.6 | 2.4 | Vf |
| REVERSE VOLTAGE | 5.0 | 5.0 | 5.0 | Vr |
| AXIAL INTENSITY (TYP) | 6 | 6 | 6 | mcd |
| VIEWING ANGLE | 70 | 70 | 70 | 2x theta |
| LED POSITION: | 1 | 2 | 3 | |
| LENS FINISH: | DIFFUSED SAME AS EMITTED COLOR | | | |

| LIMITS OF SAFE OPERATION AT 25°C | | | |
|----------------------------------|---------|------------|-------|
| PARAMETER | COLORS | MAX | UNITS |
| PEAK FORWARD CURRENT* | | 150 | mA |
| STEADY CURRENT | (R/G/Y) | 30/25/30 | mA |
| POWER DISSIPATION | | 105 | mW |
| DERATE FROM 25°C | | -1.6 | mW/°C |
| OPERATING TEMP. | | -40 TO +85 | °C |
| STORAGE TEMP. | | -40 TO +85 | °C |
| SOLDERING TEMP. | | +260 | °C |
| 2.0mm FROM BODY | | 3 | SEC. |

* t<10μS

*UNLESS OTHERWISE SPECIFIED TOLERANCES PER DECIMAL PRECISION ARE: X=±1 (±0.039), X.X=±0.5 (±0.020), X.XX=±0.25 (±0.010), X.XXX=±0.127 (±0.005). LEAD SIZE=±0.05 (±0.002), LEAD LENGTH=±0.75 (±0.030). MIN= ^{+DECIMAL PRECISION}_{-0.00} MAX= ^{+0.00}_{-DECIMAL PRECISION}

UNCONTROLLED DOCUMENT

T-1.8mm LED RIGHT ANGLE THREE HIGH, FAULT INDICATOR, POS.1: RED, POS.2: GREEN, POS.3: YELLOW, COLOR DIFFUSED.

THE SPECIFICATIONS MAY CHANGE AT ANY TIME WITHOUT NOTICE DUE TO NEW MATERIALS OR PRODUCT IMPROVEMENT.

CONFIDENTIAL INFORMATION
THE INFORMATION CONTAINED IN THIS DOCUMENT IS THE PROPERTY OF LUMEX INC. EXCEPT AS SPECIFICALLY AUTHORIZED IN WRITING BY LUMEX INC., THE HOLDER OF THIS DOCUMENT SHALL
KEEP ALL INFORMATION CONTAINED HEREIN CONFIDENTIAL AND SHALL PROTECT SAME IN WHOLE OR IN PART FROM DISCLOSURE AND DISSEMINATION TO ALL THIRD PARTIES.

Mouser Electronics

Authorized Distributor

Click to View Pricing, Inventory, Delivery & Lifecycle Information:

Lumex:

[SSF-LXH513IGYD](#)