
**SSS-LX5093XX SERIES T-5mm LAMP WITH ATTACHED SPACER**
**FEATURES**

- Four Color/Nine Lens Options
- Bi-Color Version
- Low Current Options
- Attached Spacer

**APPLICATIONS**

- Panel Indicators
- Status P.C. Mount Indicators
- Switches/Keyboards

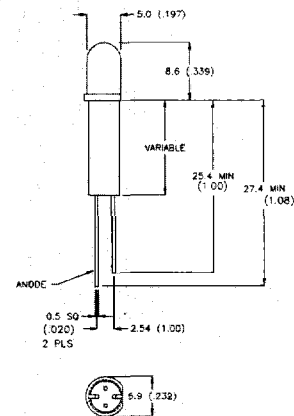
**OPTIONS AVAILABLE**

- Add-on Leads
- Panel Mounting Hardware
- Black PVC Material
- White Nylon Optional

LUMEX PART NBR	EMITTED COLOR		EPOXY	BRIGHTNESS		VIEW ANGLE	VI@20mA	
	PEAK(nm)			TYP.(mcd.)	I(mA)		TYP.	MAX
SSS-LX5093ID-	RED	635	RED DIFF.		20	80	2.0	2.8
SSS-LX5093IT-	RED	635	RED TRANSP.		20	25	2.0	2.8
SSS-LX5093SRD-	RED	660	RED DIFF.		20	80	1.7	2.8
SSS-LX5093SRT-	RED	660	RED TRANSP.		20	25	1.7	2.8
SSS-LX5093GD-	GREEN	565	GREEN DIFF.		20	80	2.1	2.8
SSS-LX5093GT-	GREEN	565	GREEN TRANSP.		20	25	2.1	2.8
SSS-LX5093YD-	YELLOW	585	YELLOW DIFF.		20	8	2.1	2.8
SSS-LX5093YT-	YELLOW	585	YELLOW TRANSP.		20	25	2.1	2.8
<b>BI-COLOR OPTIONS</b>								
SSS-LX5093IGW-	RED/GREEN	635-565	WHITE DIFF.		20/20	80	2.0	2.8
<b>LOW CURRENT OPTIONS (OTHER COLORS AVAILABLE)</b>								
SSS-LX5093LID-	RED	635	RED DIFF.		2	80	1.9	2.7

ADD THREE DIGITS FOR 100"-1.00" SPACER (.005" INCREMENTS)

See pages 8-14 for Max. operating limits and operating curves

**DIMENSIONS (mm/inch) ±.2mm**

**SSI-LXR5093XX SERIES T-4 LEDS WITH EXTERNAL REFLECTORS**
**FEATURES**

- Four Color Options
- Bi-Color Version
- Long Life/Low Power
- Built-on Reflector

**APPLICATIONS**

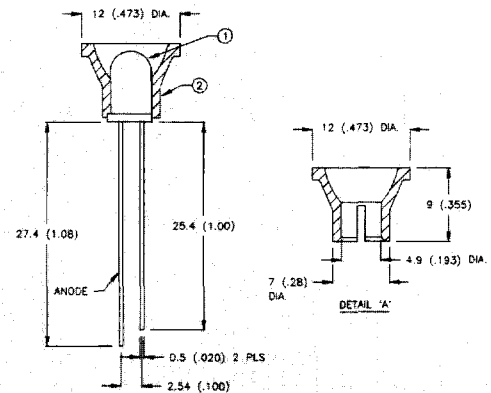
- Panel Annunciators
- Status Illumination
- Switches/Keyboards
- Backlighting

**OPTIONS AVAILABLE**

- Add-on Spacers
- Add-on Leads

LUMEX PART NBR	EMITTED COLOR		EPOXY	BRIGHTNESS		VIEW ANGLE	VI@20mA	
	PEAK(nm)			TYP.(mcd.)	I(mA)		TYP.	MAX
SSI-LXR5093XX	RED	635	RED DIFF.	30	20	80	2.0	2.8
SSI-LXR5093SRD	RED	660	RED DIFF.	100	20	80	1.7	2.2
SSI-LXR5093GD	GREEN	565	GREEN DIFF.	30	20	80	2.1	2.8
SSI-LXR5093YD	YELLOW	585	YELLOW DIFF.	30	20	80	2.1	2.8
<b>BI-COLOR OPTIONS</b>								
SSI-LXR5093HW	RED/GREEN	695-565	WHITE DIFF.	20/20	20/20	80	2.0	2.8

See pages 8-14 for Max. operating limits and operating curves

**DIMENSIONS (mm/inch) ±.2mm**

**SSL-LX509F3XX SERIES T-5 FLANGELESS LED LAMPS**
**FEATURES**

- Four Color/Nine Lens Options
- Bi-Color Version
- Low Current Options
- Flangeless Lens

**APPLICATIONS**

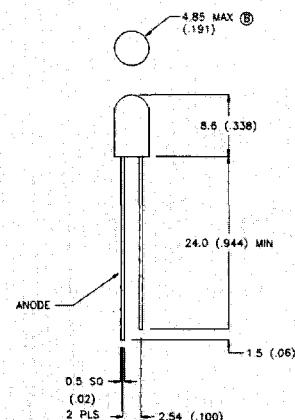
- Panel Indicators
- Status P.C. Mount Indicator
- Switches/Keyboards

**OPTIONS AVAILABLE**

- Add-on Spacers
- Add-on Leads
- Panel Mounting Hardware
- P.C. Mounting Options

LUMEX PART NBR	EMITTED COLOR		EPOXY	BRIGHTNESS		VIEW ANGLE	VI@20mA	
	PEAK(nm)			TYP.(mcd.)	I(mA)		TYP.	MAX
SSL-LX509F3ID	RED	635	RED DIFF.	20	20	80	2.0	2.8
SSL-LX509F3IT	RED	635	RED TRANSP.	120	20	25	2.0	2.8
SSL-LX509F3SRD	RED	660	RED DIFF.	250	20	80	1.7	2.2
SSL-LX509F3SRT	RED	660	RED TRANSP.	400	20	25	1.7	2.2
SSL-LX509F3GD	GREEN	565	GREEN DIFF.	20	20	80	2.1	2.8
SSL-LX509F3GT	GREEN	565	GREEN TRANSP.	100	20	25	2.1	2.8
SSL-LX509F3YD	YELLOW	585	YELLOW DIFF.	20	20	80	2.1	2.8
SSL-LX509F3YT	YELLOW	585	YELLOW TRANSP.	100	20	25	2.1	2.8
<b>BI-COLOR OPTIONS</b>								
SSL-LX509F3IGW	RED/GREEN	635/565	WHITE DIFF.	12/12	20/20	80	2.0	2.8
<b>LOW CURRENT OPTIONS (OTHER COLORS AVAILABLE)</b>								
SSL-LX509F3LID	RED	635	RED DIFF.	2.0	2	80	1.9	2.7

See pages 8-14 for Max. operating limits and operating curves

**DIMENSIONS (mm/inch) ±.2mm**


# Mouser Electronics

Authorized Distributor

Click to View Pricing, Inventory, Delivery & Lifecycle Information:

Lumex:

[SSS-LX5093YD-500B](#) [SSS-LX5093GD-500B](#) [SSS-LX5093SRD-350B](#)