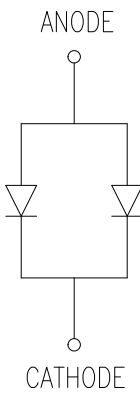
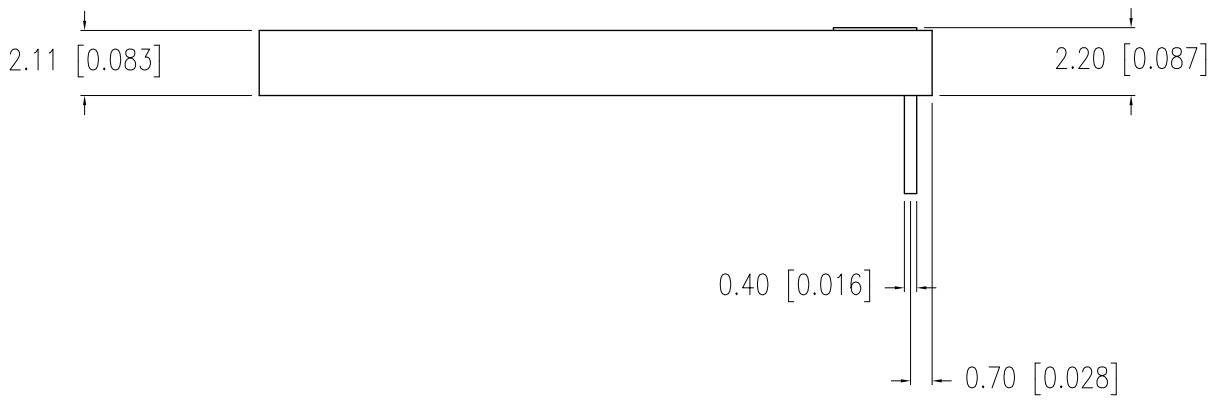
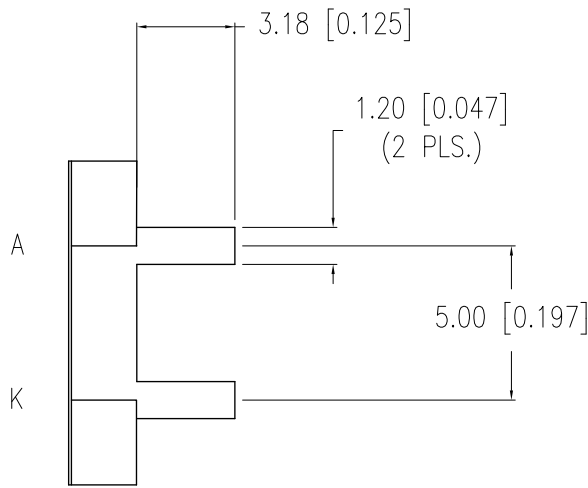
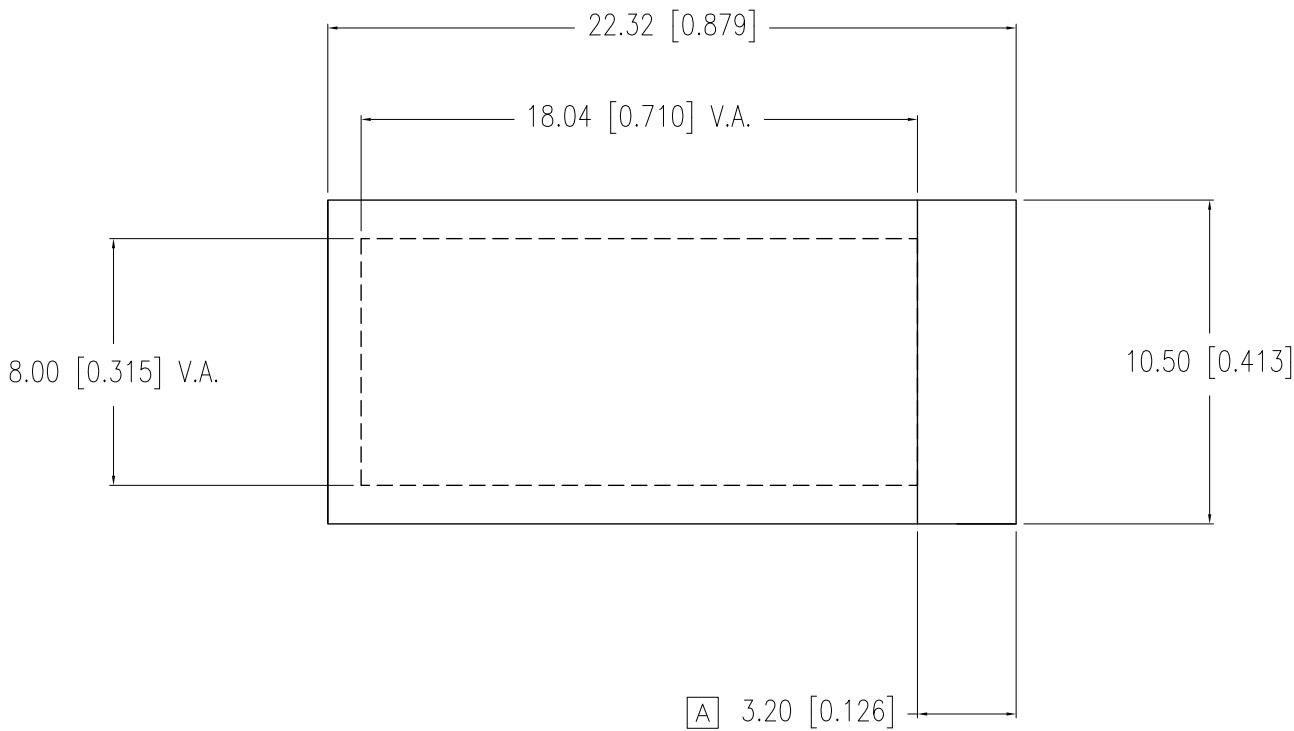


PART NUMBER	SSB—CEL187USBW	REV.	A
DATE	E.C.N. NUMBER AND REVISION COMMENTS		REV.
08.05.10	E.C.N. #11655.		A





ELECTRO—OPTICAL CHARACTERISTICS T _A =25°C			I _f = 40mA	PER MODULE	
PARAMETER	MIN	TYP	MAX	UNITS	TEST COND
PEAK WAVELENGTH		470		nm	
FORWARD VOLTAGE		3.5	4.0	V _f	
REVERSE VOLTAGE	5.0			V _r	I _r = 0.40mA
AXIAL INTENSITY	280	400		cd/m²	I _f = 20mA
EMITTED COLOR:	BLUE				
EPOXY LENS FINISH:	CLEAR WITH WHITE DIFFUSER				

LIMITS OF SAFE OPERATION AT 25°C PER DIE		
PARAMETER	MAX	UNITS
PEAK FORWARD CURRENT*	100	mA
STEADY CURRENT	30	mA
POWER DISSIPATION	105	mW
DERATE FROM 25°C	— 1.2	mW/°C
OPERATING, STORAGE TEMP.	—30 TO +80	°C
SOLDERING TEMP.	+260	°C
2.0mm FROM BODY	3	SEC. MAX

* t<10μS

CAUTION: STATIC SENSITIVE DEVICE
FOLLOW PROPER E.S.D. HANDLING PROCEDURES
WHEN WORKING WITH THIS PART.

*UNLESS OTHERWISE SPECIFIED TOLERANCES PER DECIMAL PRECISION ARE: X=±1 (±0.039), X.X=±0.5 (±0.020), X.XX=±0.25 (±0.010), X.XXX=±0.127 (±0.005). LEAD SIZE=±0.05 (±0.002), LEAD LENGTH=±0.75 (±0.030). MIN= ^{+DECIMAL PRECISION} _{-0.00} MAX.= ^{+0.00} _{-DECIMAL PRECISION} UNCONTROLLED DOCUMENT

 425 N. GARY AVE. CAROL STREAM, IL 60188 PHONE:800—278—5666 FAX:630—315—2150 WEB: WWW.LUMEX.COM	18.04mm x 8.0mm V.A. CUSTOM LED BACKLIGHT 2 CHIPS, 470nm BLUE.		DATE: 05.21.08	DRAWN BY: JN
	THE SPECIFICATIONS MAY CHANGE AT ANY TIME WITHOUT NOTICE DUE TO NEW MATERIALS OR PRODUCT IMPROVEMENT.		PAGE: 1 OF 1	CHKD BY: KF
	CONFIDENTIAL INFORMATION THE INFORMATION CONTAINED IN THIS DOCUMENT IS THE PROPERTY OF LUMEX INC. EXCEPT AS SPECIFICALLY AUTHORIZED IN WRITING BY LUMEX INC., THE HOLDER OF THIS DOCUMENT SHALL KEEP ALL INFORMATION CONTAINED HEREIN CONFIDENTIAL AND SHALL PROTECT SAME IN WHOLE OR IN PART FROM DISCLOSURE AND DISSEMINATION TO ALL THIRD PARTIES.		SCALE: N/A	APRVD BY: SS
			UNIT: mm [INCH]	

Mouser Electronics

Authorized Distributor

Click to View Pricing, Inventory, Delivery & Lifecycle Information:

Lumex:

[SSB-CEL187USBW](#)