

PART NUMBER
LCM-S01602DSF/I-Y

REV.

—

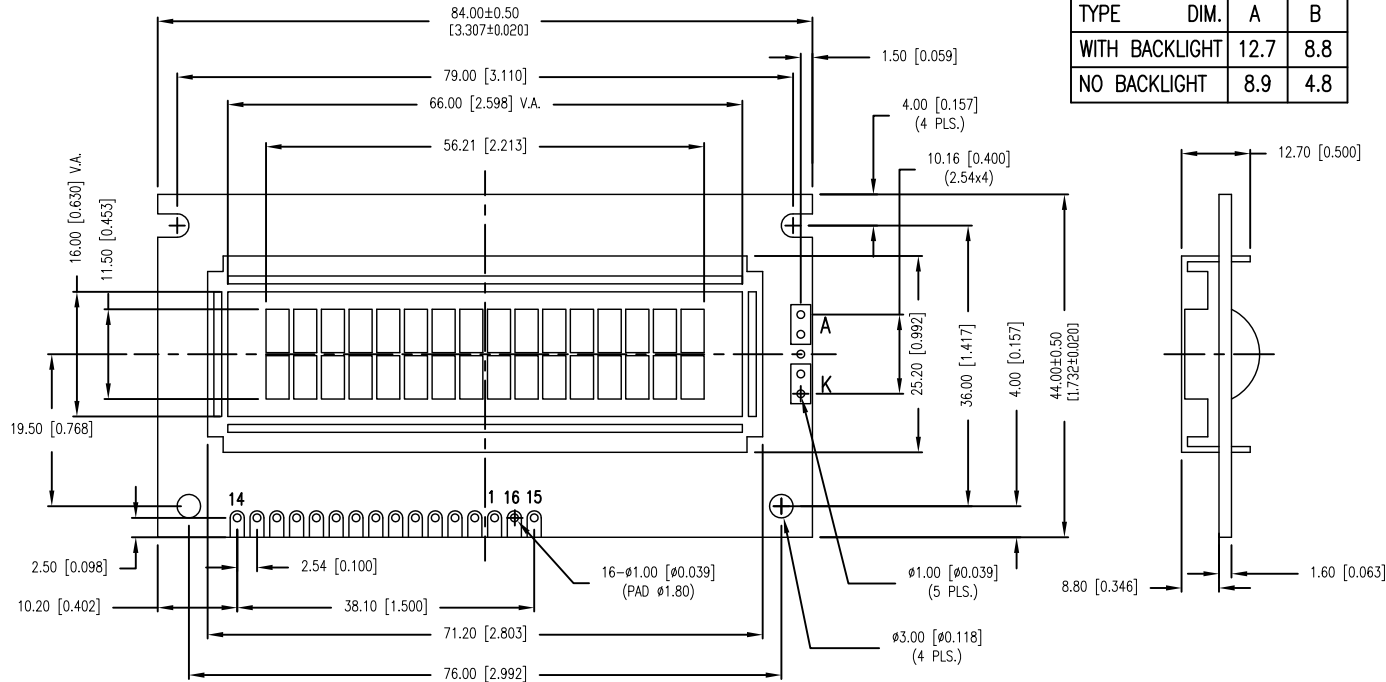
REV. E.C.N. NUMBER AND REVISION COMMENTS

DATE

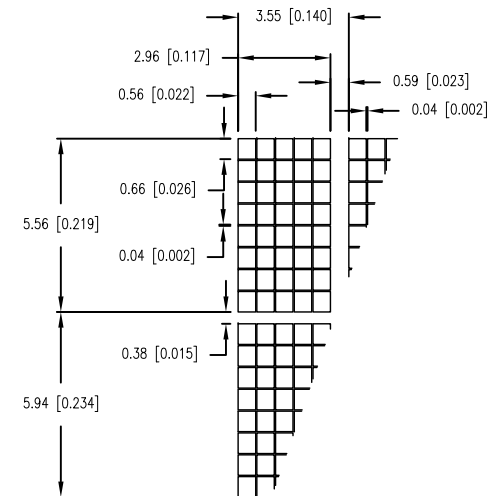
P/N PREFIX/SUFFIX TABLE

LCM-X	DX	DESCRIPTION
STANDARD	S	SR STN, REFLECTIVE
	SF	STN, TRANSFLECTIVE(W/ BACKLIGHT)
HIGH TEMP.	H	TR TN, REFLECTIVE
	TF	TN, TRANSFLECTIVE(W/ BACKLIGHT)

TYPE	DIM.	A	B
WITH BACKLIGHT	12.7	8.8	
NO BACKLIGHT	8.9	4.8	



CHARACTER DETAIL



CAUTION: STATIC SENSITIVE DEVICE
FOLLOW PROPER E.S.D. HANDLING PROCEDURES
WHEN WORKING WITH THIS PART.

*UNLESS OTHERWISE SPECIFIED TOLERANCE IS $\pm 0.25\text{mm}$ ($\pm 0.010''$)

REV.

PART NUMBER

— LCM-S01602DSF/I-Y

5.56mm CHARACTER HEIGHT, 16 x 2 CHARACTERS,
5 x 8 DOT MATRIX, LCD MODULE, YELLOW BACKLIGHT,
1/16 DUTY, 1/5 BIAS.

CONFIDENTIAL INFORMATION

THE INFORMATION CONTAINED IN THIS DOCUMENT IS THE PROPERTY OF LUMEX INC. EXCEPT AS SPECIFICALLY AUTHORIZED IN WRITING BY LUMEX INC., THE HOLDER OF THIS DOCUMENT SHALL KEEP ALL INFORMATION CONTAINED HEREIN CONFIDENTIAL AND SHALL PROTECT SAME IN WHOLE OR IN PART FROM DISCLOSURE AND DISSEMINATION TO ALL THIRD PARTIES.

RELIABILITY NOTE

OUR MANY YEARS OF EXPERIENCE DATA ACCUMULATION INDICATE THAT SOLDER HEAT IS A MAJOR CAUSE OF EARLY AND FUTURE FAILURE. PLEASE PAY ATTENTION TO YOUR SOLDERING PROCESS.

LUMEX
INCORPORATED

290 E. HELLEN ROAD
PALATINE, ILLINOIS 60067
PHONE: 1-847-359-2790
WEB: HTTP://WWW.LUMEX.COM

DRAWN BY:

MA

CHECKED BY:

JD

APPROVED BY:

JD

DATE: 03.12.14

PAGE: 1 OF 2

SCALE: N/A

PART NUMBER
LCM-S01602DSF/I-Y

REV.

—

REV. E.C.N. NUMBER AND REVISION COMMENTS

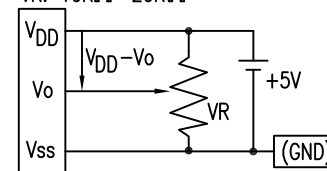
DATE

SEE PAGE #1./

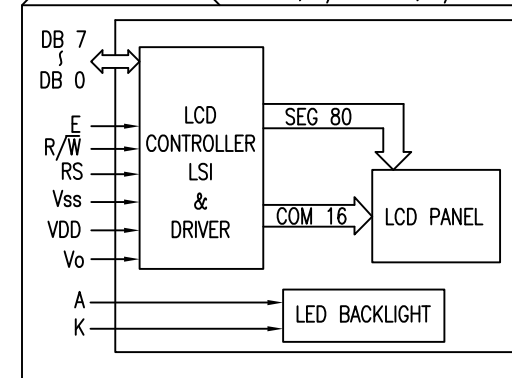
PIN CONFIGURATION

PIN NO.	SYMBOL	LEVEL	FUNCTION	
1	Vss	—	POWER SUPPLY	GND (0V)
2	VDD	—		5V
3	Vo	—		FOR LCD DRIVE
4	RS	H/L	REGISTER SELECT SIGNAL H: DATA INPUT L: INSTRUCTION INPUT	
5	R/W	H/L	H: DATA READ (MODULE-->MPU) L: DATA WRITE (MODULE<--MPU)	
6	E	H,H->L	ENABLE	
7~14	DB0~DB7	H/L	DATA BUS—SOFTWARE SELECTABLE 4 OR 8 BIT MODE.	
15	A	—	ANODE	LED BACKLIGHT
16	K	—	CATHODE	LED BACKLIGHT

VDD-Vo: LCD DRIVING VOLTAGE
VR: 10KΩ-20KΩ



BLOCK DIAGRAM 16 x 2, 1/16 DUTY, 1/5 BIAS



ELECTRICAL CHARACTERISTICS

VDD=4.7V to 5.3V, TA=25°C

ITEM	SYMBOL	CONDITION	STANDARD VALUE			UNIT
			MIN.	TYP.	MAX.	
SUPPLY VOLTAGE FOR LOGIC	VDD-Vss	—	—	5.0	—	V
SUPPLY CURRENT FOR LOGIC	IDD	VDD=5V	—	2.0	3.0	mA
INPUT VOLTAGE	HIGH	VIH	—	2.2	—	4.7
	LOW	VIL	—	0	—	0.6
OUTPUT VOLTAGE	HIGH	VOH	—	2.4	—	—
	LOW	VOL	—	—	—	0.4
*LED BACKLIGHT	VOLTAGE	Vf	If=160mA	—	4.2	4.5
	CURRENT	If	—	—	160	400
	POWER CONSUMPTION	PD	—	—	660	—
	LUMINOUS	L	If=160mA	70	—	—
	COLOR	—	—	—	—	nm

*ONLY APPLIES TO MODULES WITH BACKLIGHT

ABSOLUTE MAXIMUM RATINGS

ITEM	SYMBOL	TEST CONDITION	STANDARD VALUE		UNIT
			MIN	MAX	
SUPPLY VOLTAGE FOR LOGIC	VDD-Vss	Ta=25°C	4.7	5.3	V
SUPPLY VOLTAGE FOR LCD DRIVE	VDD-Vo	—	4.2@50°C	4.8@0°C	V
INPUT VOLTAGE	VI	Ta=25°C	Vss	VDD	V
OPERATING TEMPERATURE	Topr	LCM-S	0	50	°C
		LCM-H	-20	70	°C
		LCM-S	-20	70	°C
STORAGE TEMPERATURE	Tstg	LCM-H	-30	85	°C

*UNLESS OTHERWISE SPECIFIED TOLERANCE IS ±0.25mm (±0.010")

REV.

PART NUMBER

— LCM-S01602DSF/I-Y

5.56mm CHARACTER HEIGHT, 16 x 2 CHARACTERS,
5 x 8 DOT MATRIX, LCD MODULE, YELLOW BACKLIGHT,
1/16 DUTY, 1/5 BIAS.

CONFIDENTIAL INFORMATION

THE INFORMATION CONTAINED IN THIS DOCUMENT IS THE PROPERTY OF LUMEX INC. EXCEPT AS SPECIFICALLY AUTHORIZED IN WRITING BY LUMEX INC., THE HOLDER OF THIS DOCUMENT SHALL KEEP ALL INFORMATION CONTAINED HEREIN CONFIDENTIAL AND SHALL PROTECT SAME IN WHOLE OR IN PART FROM DISCLOSURE AND DISSEMINATION TO ALL THIRD PARTIES.

RELIABILITY NOTE

OUR MANY YEARS OF EXPERIENCE DATA ACCUMULATION INDICATE THAT SOLDER HEAT IS A MAJOR CAUSE OF EARLY AND FUTURE FAILURE. PLEASE PAY ATTENTION TO YOUR SOLDERING PROCESS.

LUMEX
INCORPORATED

290 E. HELLEN ROAD
PALATINE, ILLINOIS 60067
PHONE: 1-847-359-2790
WEB: HTTP://WWW.LUMEX.COM

DRAWN BY:	CHECKED BY:	APPROVED BY:	DATE: 03.12.14
MA			PAGE: 2 OF 2
			SCALE: N/A

Mouser Electronics

Authorized Distributor

Click to View Pricing, Inventory, Delivery & Lifecycle Information:

Lumex:

[LCM-S01602DSF/I-Y](#)