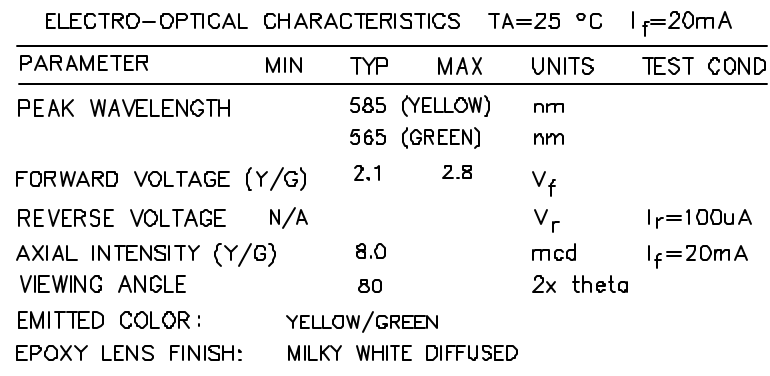
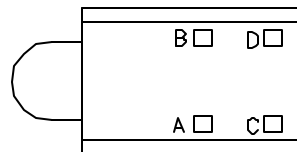


DRAWING NUMBER SSF-LXH240YGYGW	REV G
-----------------------------------	----------




PARAMETER	MAX	UNITS
PEAK FORWARD CURRENT (Y/G)*	150/150	mA
STEADY CURRENT (Y/G)	30/25	mA
POWER DISSIPATION (Y/G)	105/105	mW
DERATE FROM 25 °C	-1.2	mW/ °C
OPERATING, STORAGE TEMP.	-40 TO +85	°C
LEAD SOLDERING TEMP.	+260	°C
2.0mm FROM BODY		3 SEC. MAX

PIN-OUT				
A.	BICOLOR	LED	-	YELLOW ANODE
B.	BICOLOR	LED	-	GREEN ANODE
C.	BICOLOR	LED	-	YELLOW ANODE
D.	BICOLOR	LED	-	GREEN ANODE



1. SSH-LXH240 HOLDER. MATERIAL: BLACK NYLON 94V-0.
2. SSL-LX3044YGW LED (2 PIECES).

OUR MANY YEARS OF EXPERIENCE DATA ACCUMULATION INDICATE THAT SOLDER HEAT IS A MAJOR CAUSE OF EARLY AND FUTURE FAILURE. PLEASE PAY ATTENTION TO YOUR SOLDERING PROCESS.

		292 E. HELLEN ROAD PALATINE, ILLINOIS 60067 (708) 359-2790	
CONFIDENTIAL INFORMATION THE INFORMATION CONTAINED IN THIS DOCUMENT IS THE PROPERTY OF LUMEX OPTO/COMPONENTS, INC. EXCEPT AS SPECIFICALLY AUTHORIZED IN WRITING BY LUMEX OPTO/COMPONENTS, INC., THE HOLDER OF THIS DOCUMENT SHALL KEEP ALL INFORMATION CONTAINED HEREIN CONFIDENTIAL AND SHALL PROTECT SAME IN WHOLE OR IN PART FROM DISCLOSURE AND DISSEMINATION TO ALL THIRD PARTIES.			
DATE:	1-19-93	DWN:	
SCALE:	N/A	CHK'D:	
		APPD:	
T-3mm LED, RGH TANGLE FAULT INDICATOR, BICOLOR UPPER & LOWER, MILKY WHITE EPOXY			
PAGE 1 OF 1	DRAWING NUMBER		REV
	SSF-LXH240YGYGW		G

Mouser Electronics

Authorized Distributor

Click to View Pricing, Inventory, Delivery & Lifecycle Information:

Lumex:

[SSF-LXH240YGYGW](#)