



SWITCH FUNCTION CODE	SWITCH FUNCTION DESCRIPTION
1	MECHANICAL,MOMENTARY,SOLDER TERMINAL
A	MECHANICAL,MOMENTARY,NO/NO WIRELEADS
C	MECHANICAL,MOMENTARY,NC/NC WIRELEADS
E	MECHANICAL,MOMENTARY,NC/NO WIRELEADS

HOUSING MATERIAL CODE	HOUSING DESCRIPTION
1	STAINLESS STEEL
2	ZINC ALLOY, CHROME PLATED
3	AL ALLOY ANODIZED BLACK

ILLU. TYPE CODE	ILLUMINATION TYPE DESCRIPTION
0	NON-ILLUMINATION
1	CENTER SPOT ILLUMINATION (STAINLESS HOUSING ONLY)
2	RING ILLUMINATION
3	POWER/STANDBY SYMBOL ILLUMINATION

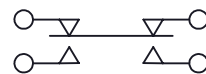
LED COLOR CODE	LED COLOR
N	NONE
R	RED
G	GREEN
B	BLUE
Y	YELLOW
W	WHITE

LED INLET VOLTAGE CODE		LED INLET VOLTAGE
NON-WIRELEADS	IF BLANK*	(SEE NOTE 1)
WIRELEADS	IF BLANK*	(SEE NOTE 1)
	05	5V
	12	12V
	24	24V

ANY CODE	DESCRIPTION
IF BLANK*	NA
XXX	PER CUSTOMER SPECIAL REQUEST


MECHANICAL CHARACTERISTICS:

SWITCH CIRCUITRY: SPDT-DB
SWITCH ACTION: MOMENTARY (PER CHART)
PRE-TRAVEL: 1.27 mm NOMINAL
OVER-TRAVEL: 0.254 mm NOMINAL
TOTAL TRAVEL: 1.524 mm NOMINAL
OPERATING FORCE: 525 g [5.15 N] NOMINAL
RELEASEING FORCE: 340 g [3.45 N] NOMINAL
PANEL THICKNESS: 0.5 - 4.5mm
CONTACTS: SILVER
NUT TORQUE FORCE: MAX. 11.5 kpf*cm [10 LB*in]



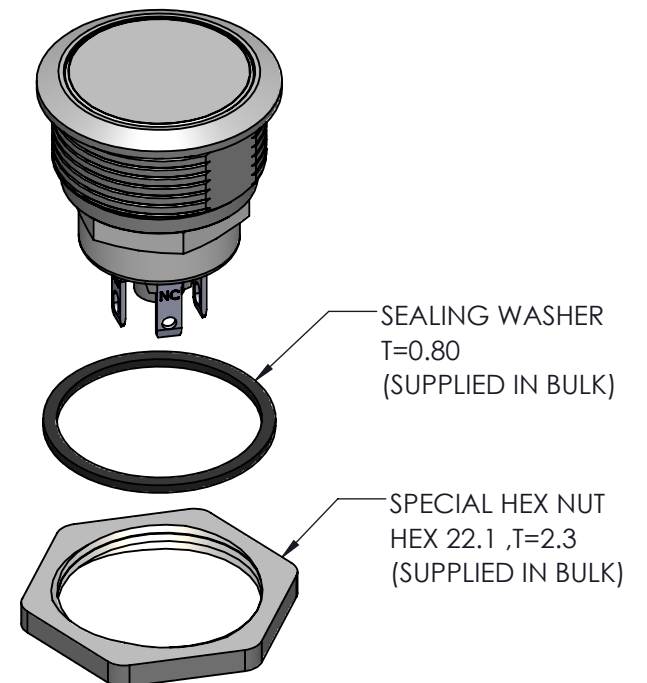
SPDT-DB

SCHEMATIC

LED SPECIFICATION				
LED CODE	LED	CIRCUITRY	Vf(VDC)	If (mA)
	Color		Color	
R	RED		1.8 ~ 2.5	20
B	BLUE		2.8 ~ 3.5	20
G	GREEN		2.8 ~ 3.5	20
Y	YELLOW		1.8 ~ 2.5	20
W	WHITE		2.8 ~ 3.5	20

Notes:
Hand Soldering Temperature (4mm above from Body) : 320°C for 3 seconds

WIRELEADS SPECIFICATION					
WIRELEADS TYPE	WIRELEADS SPECIFICATION	SW TERMINAL	SW TERMINAL	LED	
				COLOR	
		NO	NC	+	-
ILLUMINATION	SW :AWG24 / UL1007 LED: AWG26/UL1007	BLUE	YELLOW	RED	BLAC
NON-ILLUMINATION		BLUE	YELLOW	-	-

**ENVIROMENTAL SPECIFICATIONS:**

ENVIRONMENTAL SPECIFICATIONS:
OPERATING TEMPERATURE: -40°C to +85°C [-40°F to +185°F]
IP67 COMPLIANT

ELECTRICAL SPECIFICATIONS:

DIELECTRIC STRENGTH: 1,000VAC
INSULATION RESISTANCE: 1G OHM
CONTACT RESISTANCE:
50m /250m OHMS MAX. INITIAL(NON-WIRELEAD / WIRELEADS)



LED SPECIFICATIONS:

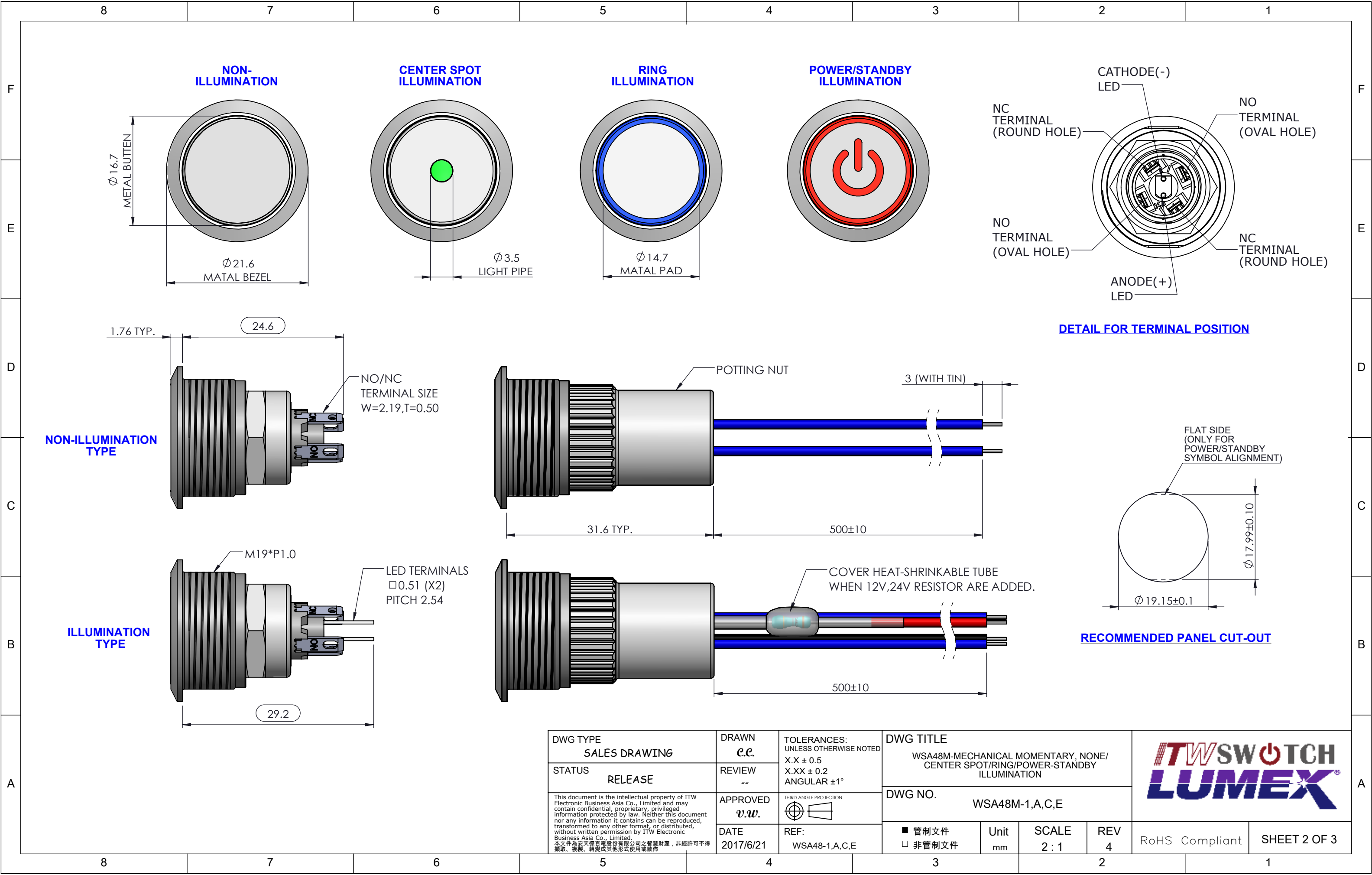
LED SPECIFICATIONS:
SEE LED SPECIFICATION

CERTIFICATION: UL 61058

* NOTE:

NOTE:
1.SUPPLY HEX NUT AND SEALING WASHER BULK IN PACKED

DWG TYPE SALES DRAWING	DRAWN c.c.	TOLERANCES: UNLESS OTHERWISE NOTED X.X ± 0.5 X.XX ± 0.2 ANGULAR ±1°	DWG TITLE WSA48M-MECHANICAL MOMENTARY, NONE/ CENTER SPOT/RING/POWER-STANDBY ILLUMINATION					
STATUS RELEASE	REVIEW --		DWG NO. WSA48M-1,A,C,E					
<p>This document is the intellectual property of ITW Electronic Business Asia Co., Limited and may contain confidential, proprietary, privileged information protected by law. Neither this document nor any information it contains can be reproduced, transformed to any other format, or distributed, without written permission by ITW Electronic Business Asia Co., Limited.</p> <p>本文件為愛特威亞電子有限公司之智慧財產，未經許可不得複製、複製、轉錄或任何其他形式使用或散佈。</p>	APPROVED v.w.	THIRD ANGLE PROJECTION 	DWG NO. WSA48M-1,A,C,E					
	DATE 2017/6/21	REF: WSA48-1,A,C,E	<input checked="" type="checkbox"/> 管制文件 <input type="checkbox"/> 非管制文件	Unit mm	SCALE 2:1	REV 4		RoHS Compliant



Mouser Electronics

Authorized Distributor

Click to View Pricing, Inventory, Delivery & Lifecycle Information:

Lumex:

[WSA48M-A10N](#)