


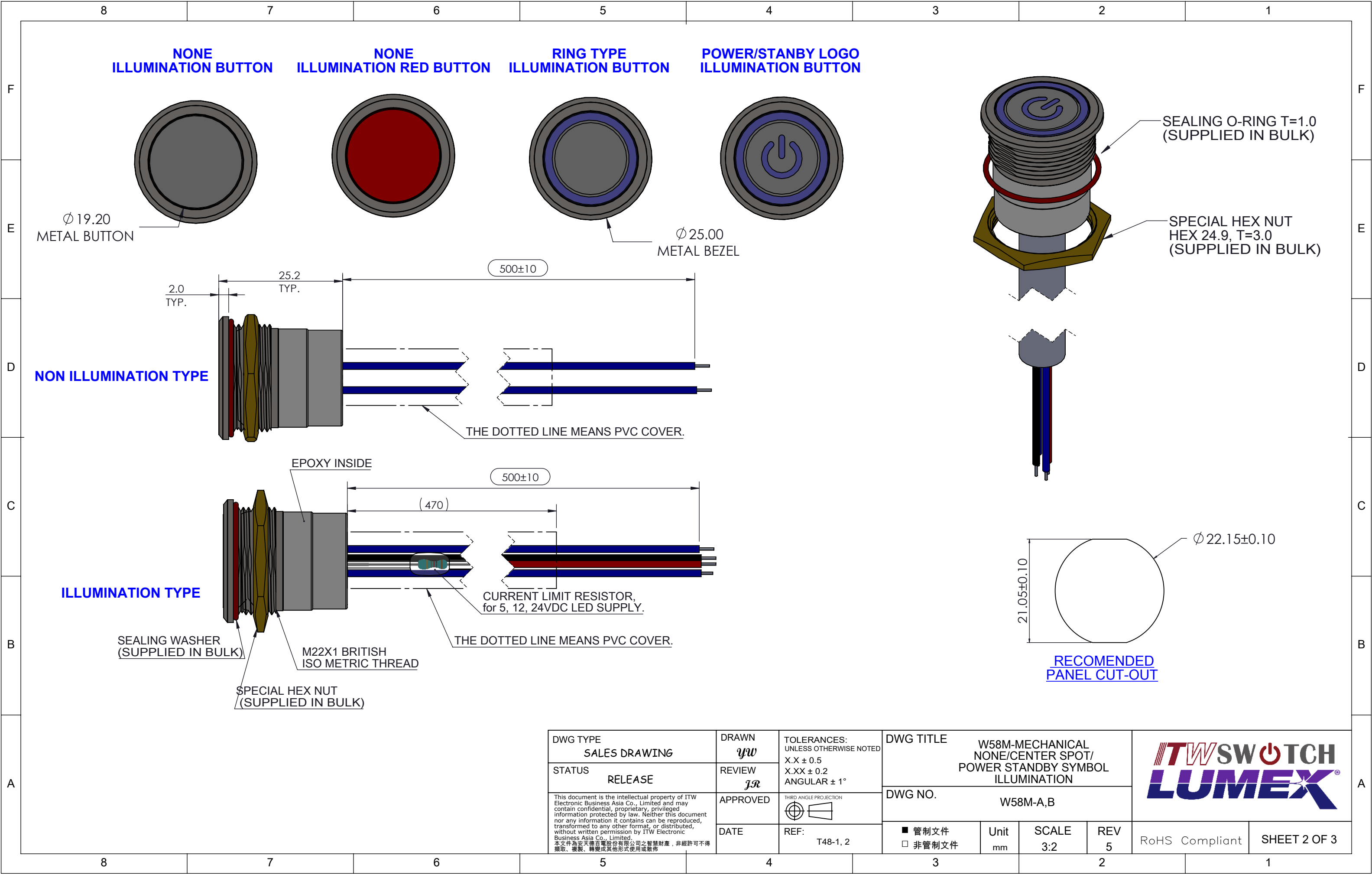




8		7		6		5		4		3		2		1																																																	
<div>W58M—<div>①</div><div>②</div><div>③</div><div>④</div><div>⑤</div></div>																																																															
<table><tr><th>SWITCH FUNCTION CODE</th><th>SWITCH FUNCTION DESCRIPTION</th></tr><tr><td>A</td><td>MECHANICAL,MOMENTARY,WIRELEADS</td></tr><tr><td>B</td><td>MECHANICAL,MAINTAIN,WIRELEADS</td></tr></table>		SWITCH FUNCTION CODE	SWITCH FUNCTION DESCRIPTION	A	MECHANICAL,MOMENTARY,WIRELEADS	B	MECHANICAL,MAINTAIN,WIRELEADS	<table><tr><th>HOUSING MATERIAL CODE</th><th>HOUSING DECSRIPTION</th></tr><tr><td>1</td><td>STAINLESS STEEL</td></tr><tr><td>2</td><td>ALUMINUM, INHERENT</td></tr></table>		HOUSING MATERIAL CODE	HOUSING DECSRIPTION	1	STAINLESS STEEL	2	ALUMINUM, INHERENT	<table><tr><th>ILLU. TYPE CODE</th><th>ILLUMINATION TYPE DESCRIPTION</th></tr><tr><td>0</td><td>NON.-ILLUMINATION</td></tr><tr><td>2</td><td>RING ILLUMINATION</td></tr><tr><td>3</td><td>POWER/STANDBY SYMBOL ILLUMINATION</td></tr><tr><td>R</td><td>RED BUTTON, NON-ILLUMINATION</td></tr></table>		ILLU. TYPE CODE	ILLUMINATION TYPE DESCRIPTION	0	NON.-ILLUMINATION	2	RING ILLUMINATION	3	POWER/STANDBY SYMBOL ILLUMINATION	R	RED BUTTON, NON-ILLUMINATION	<table><tr><th>LED COLOR CODE</th><th>LED COLOR</th></tr><tr><td>N</td><td>NONE</td></tr><tr><td>G</td><td>GREEN</td></tr><tr><td>R</td><td>RED</td></tr><tr><td>B</td><td>BLUE</td></tr><tr><td>W</td><td>WHITE</td></tr><tr><td>Y</td><td>YELLOW</td></tr><tr><td>RB</td><td>RED/BLUE DUAL</td></tr><tr><td>RG</td><td>RED/GREEN DUAL</td></tr><tr><td>BG</td><td>BLUE/GREEN DUAL</td></tr></table>		LED COLOR CODE	LED COLOR	N	NONE	G	GREEN	R	RED	B	BLUE	W	WHITE	Y	YELLOW	RB	RED/BLUE DUAL	RG	RED/GREEN DUAL	BG	BLUE/GREEN DUAL	<table><tr><th>LED INLET VOLTAGE CODE</th><th>LED INLET VOLTAGE</th></tr><tr><td>IF BLANK*</td><td>(SEE NOTE )</td></tr><tr><td>05</td><td>5V</td></tr><tr><td>12</td><td>12V</td></tr><tr><td>24</td><td>24V</td></tr></table>		LED INLET VOLTAGE CODE	LED INLET VOLTAGE	IF BLANK*	(SEE NOTE )	05	5V	12	12V	24	24V		
SWITCH FUNCTION CODE	SWITCH FUNCTION DESCRIPTION																																																														
A	MECHANICAL,MOMENTARY,WIRELEADS																																																														
B	MECHANICAL,MAINTAIN,WIRELEADS																																																														
HOUSING MATERIAL CODE	HOUSING DECSRIPTION																																																														
1	STAINLESS STEEL																																																														
2	ALUMINUM, INHERENT																																																														
ILLU. TYPE CODE	ILLUMINATION TYPE DESCRIPTION																																																														
0	NON.-ILLUMINATION																																																														
2	RING ILLUMINATION																																																														
3	POWER/STANDBY SYMBOL ILLUMINATION																																																														
R	RED BUTTON, NON-ILLUMINATION																																																														
LED COLOR CODE	LED COLOR																																																														
N	NONE																																																														
G	GREEN																																																														
R	RED																																																														
B	BLUE																																																														
W	WHITE																																																														
Y	YELLOW																																																														
RB	RED/BLUE DUAL																																																														
RG	RED/GREEN DUAL																																																														
BG	BLUE/GREEN DUAL																																																														
LED INLET VOLTAGE CODE	LED INLET VOLTAGE																																																														
IF BLANK*	(SEE NOTE )																																																														
05	5V																																																														
12	12V																																																														
24	24V																																																														
<p><u>MECHANICAL CHARACTERISTICS:</u> SWITCH CIRCUITRY: SPST-NO-DB (CONTACT FORM X) SWITCH ACTION: MOMENTARY AND MAINTAINED (PER CHART) BUTTON TRAVEL: 2.3 mm [.090 in] NOMINAL OPERATING FORCE: 306g [3N] NOMINAL CONTACT BOUNCE: 1ms NOMINAL</p> <p>PANEL THICKNESS: 0.5 - 4.5 mm[.020-.177 in] CONTACTS: GOLD PLATED NUT TORQUE FORCE: MAX 11.5 kgf-cm [10 LB-in]</p> <p><u>ENVIROMENTAL SPECIFICATIONS:</u> ACTUATOR INGRESS PROTECTION: IP67</p> <p><u>OPERATING TEMPERATURE:</u> NON-ILLUMINATION TYPE: -40 ° C to +85 ° C [-40 ° F to +185 ° F] ILLUMINATION TYPE: -25 ° C to +85 ° C [-13 ° F to +185 ° F]</p> <p><u>ELECTRICAL SPECIFICATIONS:</u> CURRENT RATING: MOMENTARY: 250mA@12VDC, 100K cycles 150mA@28VDC, 150K cycles 10mA@12VDC, 1,000K cycles MAINTAINED : 50,000 CYCLES NOMINAL DIELECTRIC STRENGTH: 1,000VAC INSULATION RESISTANCE: 1G OHM CONTACT RESISTANCE: 250m OHMS MAX (initial)</p> <p><u>LED SPECIFICATIONS:</u> SEE LED SPECIFICATION(PAGE 1)</p> <p><u>WIRELEADS SPECIFICATION:</u> 1. WIRELEADS USED BY AWG26/UL1007 2. SWITCH WIRELEADS:BLUE</p> <p><u>NOTE:</u> 1. CURRENT LIMITING RESISTOR IS REQUIRED TO LIMIT LED FORWARD CURRENT TO 20mA 2. SUPPLY HEX NUT AND SEALING WASHER BULK PACKED</p>																																																															
<table><tr><td colspan="2">DWG TYPE SALES DRAWING</td><td>DRAWN <i>YW</i></td><td rowspan="2">TOLERANCES: UNLESS OTHERWISE NOTED X.X ± 0.5 X.XX ± 0.2 ANGULAR ± 1°</td><td colspan="4">DWG TITLE W58M-MECHANICAL NONE/CENTER SPOT/ POWER STANDBY SYMBOL ILLUMINATION</td><td colspan="4" rowspan="2"><div>ITW SWITCH LUMEX®</div></td></tr><tr><td colspan="2">STATUS RELEASE</td><td>REVIEW <i>JR</i></td><td colspan="4">DWG NO. W58M-A,B</td></tr><tr><td colspan="2" rowspan="2"><div>This document is the intellectual property of ITW Electronic Business Asia Co., Limited and may contain confidential, proprietary, privileged information protected by law. Neither this document nor any information it contains can be reproduced, transformed to any other format, or distributed, without written permission by ITW Electronic Business Asia Co., Limited. 本文作為安達電子電股份有限公司之智慧財產，非經許可不得翻取、複製、轉變成其他形式使用或散佈</div></td><td>APPROVED</td><td>THIRD ANGLE PROJECTION </td><td colspan="2"></td><td rowspan="2">■ 管制文件 □ 非管制文件</td><td>Unit mm</td><td>SCALE 3:2</td><td>REV 5</td><td rowspan="2">RoHS Compliant</td><td rowspan="2">SHEET 1 OF 3</td></tr><tr><td>DATE</td><td>REF: T48-1, 2</td><td colspan="3"></td><td></td><td></td><td></td></tr></table>																DWG TYPE SALES DRAWING		DRAWN <i>YW</i>	TOLERANCES: UNLESS OTHERWISE NOTED X.X ± 0.5 X.XX ± 0.2 ANGULAR ± 1°	DWG TITLE W58M-MECHANICAL NONE/CENTER SPOT/ POWER STANDBY SYMBOL ILLUMINATION				<div>ITW SWITCH LUMEX®</div>				STATUS RELEASE		REVIEW <i>JR</i>	DWG NO. W58M-A,B				<div>This document is the intellectual property of ITW Electronic Business Asia Co., Limited and may contain confidential, proprietary, privileged information protected by law. Neither this document nor any information it contains can be reproduced, transformed to any other format, or distributed, without written permission by ITW Electronic Business Asia Co., Limited. 本文作為安達電子電股份有限公司之智慧財產，非經許可不得翻取、複製、轉變成其他形式使用或散佈</div>		APPROVED	THIRD ANGLE PROJECTION 			■ 管制文件 □ 非管制文件	Unit mm	SCALE 3:2	REV 5	RoHS Compliant	SHEET 1 OF 3	DATE	REF: T48-1, 2															
DWG TYPE SALES DRAWING		DRAWN <i>YW</i>	TOLERANCES: UNLESS OTHERWISE NOTED X.X ± 0.5 X.XX ± 0.2 ANGULAR ± 1°	DWG TITLE W58M-MECHANICAL NONE/CENTER SPOT/ POWER STANDBY SYMBOL ILLUMINATION				<div>ITW SWITCH LUMEX®</div>																																																							
STATUS RELEASE		REVIEW <i>JR</i>		DWG NO. W58M-A,B																																																											
<div>This document is the intellectual property of ITW Electronic Business Asia Co., Limited and may contain confidential, proprietary, privileged information protected by law. Neither this document nor any information it contains can be reproduced, transformed to any other format, or distributed, without written permission by ITW Electronic Business Asia Co., Limited. 本文作為安達電子電股份有限公司之智慧財產，非經許可不得翻取、複製、轉變成其他形式使用或散佈</div>		APPROVED	THIRD ANGLE PROJECTION 			■ 管制文件 □ 非管制文件	Unit mm	SCALE 3:2	REV 5	RoHS Compliant	SHEET 1 OF 3																																																				
		DATE	REF: T48-1, 2																																																												
8		7		6		5		4		3		2		1																																																	



DWG TYPE SALES DRAWING	DRAWN <i>yw</i>	TOLERANCES: UNLESS OTHERWISE NOTED X.X ± 0.5 X.XX ± 0.2 ANGULAR ± 1°	DWG TITLE W58M-MECHANICAL NONE/CENTER SPOT/ POWER STANDBY SYMBOL ILLUMINATION						
STATUS RELEASE	REVIEW <i>JR</i>		DWG NO. W58M-A,B						
<div>This document is the intellectual property of ITW Electronic Business Asia Co., Limited and may contain confidential, proprietary, privileged information protected by law. Neither this document nor any information it contains can be reproduced, transformed to any other format, or distributed, without written permission by ITW Electronic Business Asia Co., Limited. 本文為安達電子電器股份有限公司之智慧財產，非經許可不得翻印、複製、轉變成其他形式使用或散佈。</div>		APPROVED	THIRD ANGLE PROJECTION 						
		DATE	REF: T48-1, 2	<div><input checked="" type="checkbox"/> 管制文件 <input type="checkbox"/> 非管制文件</div>	Unit mm	SCALE 3:2	REV 5	RoHS Compliant	SHEET 2 OF 3

# Mouser Electronics

Authorized Distributor

Click to View Pricing, Inventory, Delivery & Lifecycle Information:

Lumex:

[W58M-A10N](#) [W58M-A12B12](#) [W58M-A13W24](#)