

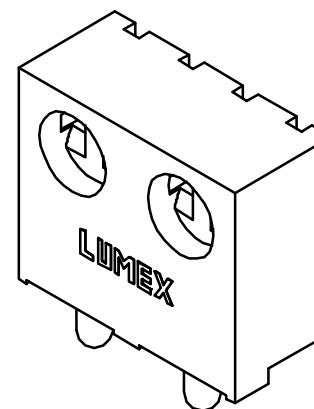
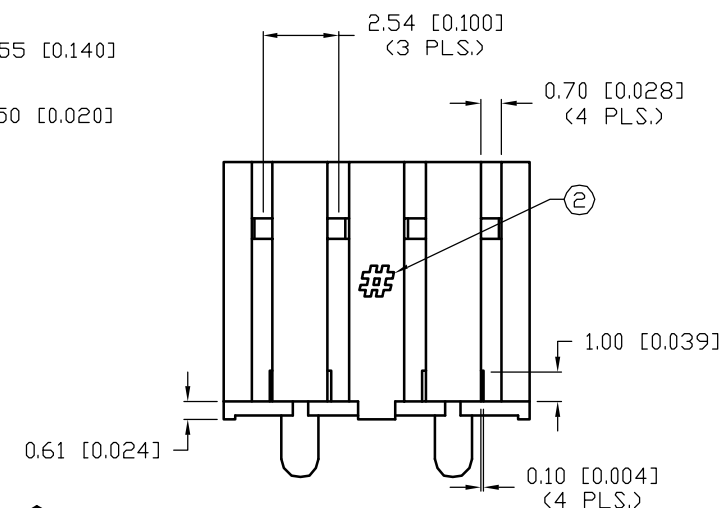
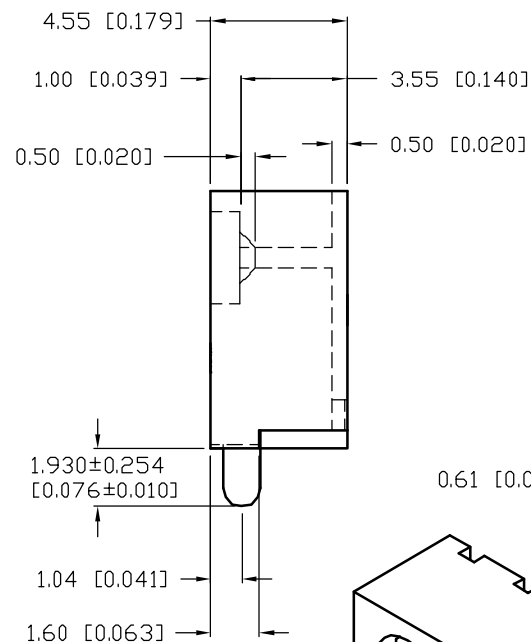
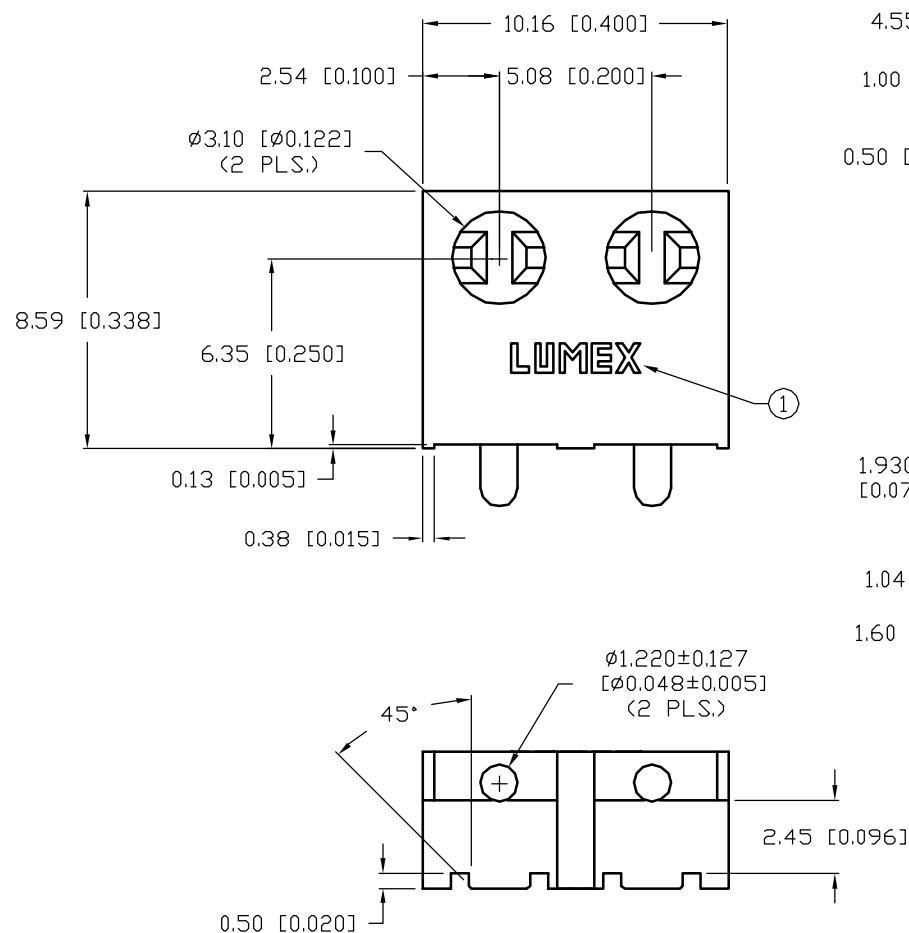
UNCONTROLLED DOCUMENT

PART NUMBER  
SSH-LXH3250

REV.

REV. E.C.N. NUMBER AND REVISION COMMENTS

DATE



## NOTES:

1. LUMEX NAME ON FRONT.
2. MOLD CAVITY MARK ON BACK.
3. MATERIAL: RYTON, BLACK POLYPHENYLENE.

UNCONTROLLED DOCUMENT

\*UNLESS OTHERWISE SPECIFIED TOLERANCE IS  $\pm 0.25\text{mm}$  ( $\pm 0.010''$ )

REV.

PART NUMBER

SSH-LXH3250

**CONFIDENTIAL INFORMATION**  
THE INFORMATION CONTAINED IN THIS DOCUMENT IS THE PROPERTY OF LUMEX INC. EXCEPT AS SPECIFICALLY AUTHORIZED IN WRITING BY LUMEX INC., THE HOLDER OF THIS DOCUMENT SHALL KEEP ALL INFORMATION CONTAINED HEREIN CONFIDENTIAL AND SHALL PROTECT SAME IN WHOLE OR IN PART FROM DISCLOSURE AND DISSEMINATION TO ALL THIRD PARTIES.

**RELIABILITY NOTE**

OUR MANY YEARS OF EXPERIENCE DATA ACCUMULATION INDICATE THAT SOLDER HEAT IS A MAJOR CAUSE OF EARLY AND FUTURE FAILURE. PLEASE PAY ATTENTION TO YOUR SOLDERING PROCESS.

**LUMEX**  
INCORPORATED

290 E. HELLEN ROAD  
PALATINE, ILLINOIS 60067  
PHONE: 1-847-359-2790  
WEB: [HTTP://WWW.LUMEX.COM](http://WWW.LUMEX.COM)

DUAL T-3mm (T-1) LED HOLDER WITH LOCATOR TABS.

DRAWN BY:

SS/DU

CHECKED BY:

APPROVED BY:

DATE: 12-28-99

PAGE: 1 OF 1

SCALE: N/A

# Mouser Electronics

Authorized Distributor

Click to View Pricing, Inventory, Delivery & Lifecycle Information:

Lumex:

[SSH-LXH3250](#)