



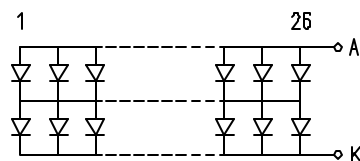
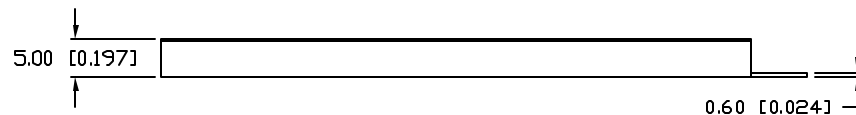
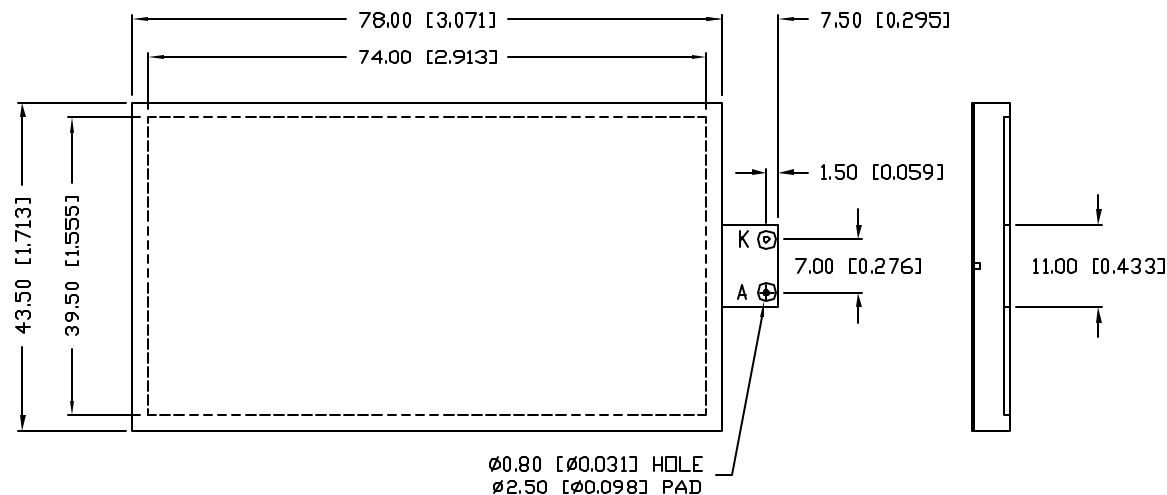
PART NUMBER

SSB-COB7440GW

REV.

REV. E.C.N. NUMBER AND REVISION COMMENTS

DATE



2 CHIPS IN SERIES
26 PARALLEL BRANCHES

ELECTRO-OPTICAL CHARACTERISTICS $T_A=25^\circ\text{C}$

PARAMETER	MIN	TYP	MAX	UNITS	TEST COND
PEAK WAVELENGTH		570 (GREEN)		nm	
FORWARD VOLTAGE		4.2	5.0	V_f	
REVERSE VOLTAGE	8			V_r	$V_r=200\mu\text{A}$
LUMINOUS INTENSITY		230		cd/m^2	$I_f=520\text{mA}$
EMITTED COLOR:	GREEN				
REFLECTOR FINISH:	MILKY WHITE				

LIMITS OF SAFE OPERATION AT 25°C

PARAMETER	MAX	UNITS
PEAK FORWARD CURRENT	650	mA
STEADY CURRENT	520	mA
POWER DISSIPATION	4.875	W
DERATE FROM 25°C	-35.9	$\text{mW}/^\circ\text{C}$
OPERATING TEMP.	-35 TO +80	$^\circ\text{C}$
STORAGE TEMP.	-40 TO +85	$^\circ\text{C}$
SOLDERING TEMP.	+260	$^\circ\text{C}$
2.0mm FROM BODY	3 SEC. MAX	

*UNLESS OTHERWISE SPECIFIED TOLERANCE IS $\pm 0.25\text{mm}$ ($\pm 0.010"$)

REV.

PART NUMBER

SSB-COB7440GW

CONFIDENTIAL INFORMATION

THE INFORMATION CONTAINED IN THIS DOCUMENT IS THE PROPERTY OF LUMEX INC. EXCEPT AS SPECIFICALLY AUTHORIZED IN WRITING BY LUMEX INC., THE HOLDER OF THIS DOCUMENT SHALL KEEP ALL INFORMATION CONTAINED HEREIN CONFIDENTIAL AND SHALL PROTECT SAME IN WHOLE OR IN PART FROM DISCLOSURE AND DISSEMINATION TO ALL THIRD PARTIES.

RELIABILITY NOTE

OUR MANY YEARS OF EXPERIENCE DATA ACCUMULATION INDICATE THAT SOLDER HEAT IS A MAJOR CAUSE OF EARLY AND FUTURE FAILURE. PLEASE PAY ATTENTION TO YOUR SOLDERING PROCESS.

LUMEX
INCORPORATED

290 E. HELLEN ROAD
PALATINE, ILLINOIS 60067
PHONE: 1-847-359-2790
WEB: [HTTP://WWW.LUMEX.COM](http://WWW.LUMEX.COM)

74mm x 40mm LCD BACKLIGHT, 570nm GREEN LEDS,
MILKY WHITE DIFFUSED.

DRAWN BY:

BC

CHECKED BY:

APPROVED BY:

DATE: 10-14-98

PAGE: 1 OF 1

SCALE: N/A

Mouser Electronics

Authorized Distributor

Click to View Pricing, Inventory, Delivery & Lifecycle Information:

Lumex:

[SSB-COB7440GW](#)