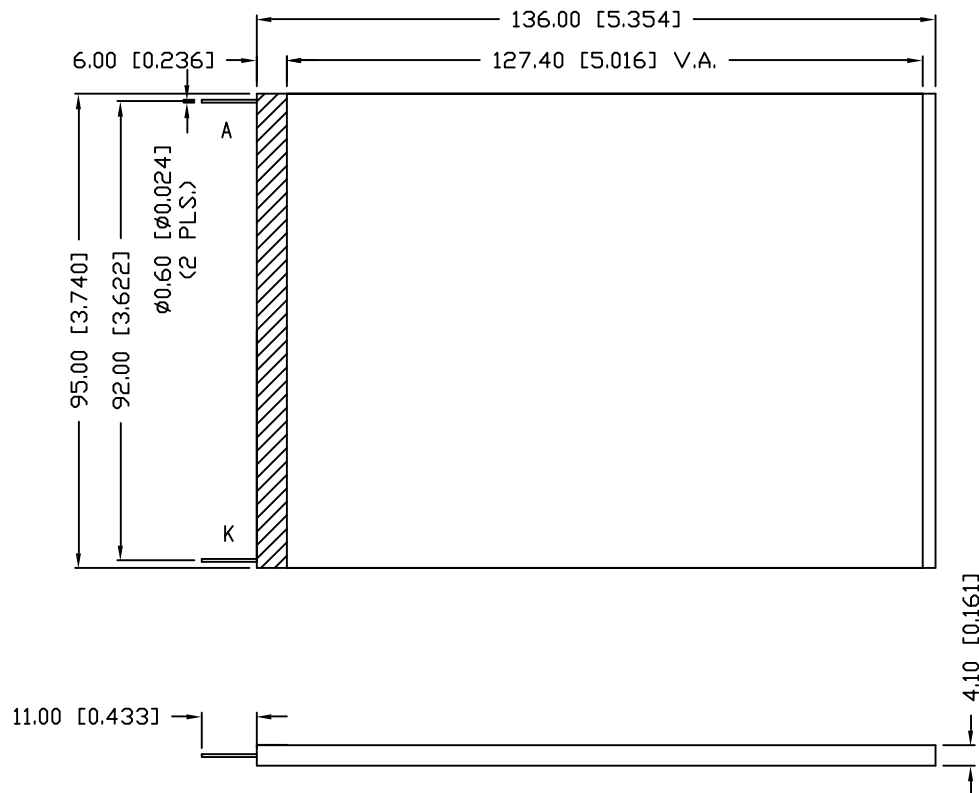


SSB-CEL12795UWW-10

PRELIMINARY IN P/N DIR



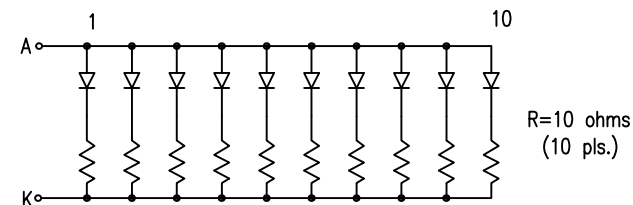
ELECTRO-OPTICAL CHARACTERISTICS $T_A=25^\circ\text{C}$ PER MODULE					$I_f=200\text{mA}$
PARAMETER	MIN	TYP	MAX	UNITS	TEST COND
PEAK WAVELENGTH		-		nm	
FORWARD VOLTAGE		3.7	4.2	$V_f$	
REVERSE VOLTAGE	5			$V_r$	$V_r=0.5\text{mA}$
LUMINOUS INTENSITY(*1)		350		$\text{cd/m}^2$	$I_f=200\text{mA}$
CHROMATICITY X	0.27	0.29	0.31		
COORDINATES(*2) Y	0.28	0.30	0.32		
EMITTED COLOR:	WHITE				
REFLECTOR FINISH:	CLEAR WHITE WITH DIFFUSER				

\*1. LUMINOUS INTENSITY TESTING CONDITION: 550nm WAVELENGTH.

\*2. THE ICI STANDARD COLORIMETRIC SYSTEM.

LIMITS OF SAFE OPERATION AT  $25^\circ\text{C}$  PER MODULE

PARAMETER	MAX	UNITS
STEADY CURRENT	240	mA
POWER DISSIPATION	0.96	W
DERATE FROM $25^\circ\text{C}$ , PER DIE	-1.2	$\text{mW}/^\circ\text{C}$
OPERATING, STORAGE TEMP.	-40 TO +85	$^\circ\text{C}$
SOLDERING TEMP.	+260	$^\circ\text{C}$
2.0mm FROM BODY		3 SEC. MAX



UNCONTROLLED DOCUMENT

\*UNLESS OTHERWISE SPECIFIED TOLERANCES PER DECIMAL PRECISION ARE: X=±1 (±0.039), X.X=±0.5 (±0.020), X.XX=±0.25 (±0.010), X.XXX=±0.127 (±0.005). LEAD SIZE=±0.05 (±0.002), LEAD LENGTH=±0.75 (±0.030). MIN= +DECIMAL PRECISION MAX= +0.00 -DECIMAL PRECISION

REV.

PART NUMBER

SSB-CEL12795UWW-10

127mm x 95mm VIEW AREA, EDGE LIT LED BACKLIGHT,  
10 CHIPS, WHITE, 3.7V @ 200mA

## CONFIDENTIAL INFORMATION

THE INFORMATION CONTAINED IN THIS DOCUMENT IS THE PROPERTY OF LUMEX INC. EXCEPT AS SPECIFICALLY AUTHORIZED IN WRITING BY LUMEX INC., THE HOLDER OF THIS DOCUMENT SHALL KEEP ALL INFORMATION CONTAINED HEREIN CONFIDENTIAL AND SHALL PROTECT SAME IN WHOLE OR IN PART FROM DISCLOSURE AND DISSEMINATION TO ALL THIRD PARTIES.

## RELIABILITY NOTE

OUR MANY YEARS OF EXPERIENCE DATA ACCUMULATION INDICATE THAT SOLDER HEAT IS A MAJOR CAUSE OF EARLY AND FUTURE FAILURE. PLEASE PAY ATTENTION TO YOUR SOLDERING PROCESS.



290 E. HELEN ROAD  
PALATINE, IL 60067-6976  
PHONE: +1.847.359.2790  
US WEB: www.lumex.com  
TW WEB: www.lumex.com.tw

DRAWN BY:

JN

CHECKED BY:

APPROVED BY:

DATE: 8.13.07

PAGE: 1 OF 1

SCALE: N/A

# Mouser Electronics

Authorized Distributor

Click to View Pricing, Inventory, Delivery & Lifecycle Information:

Lumex:

[SSB-CEL12795UWW-10](#)