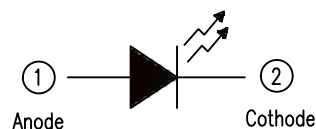
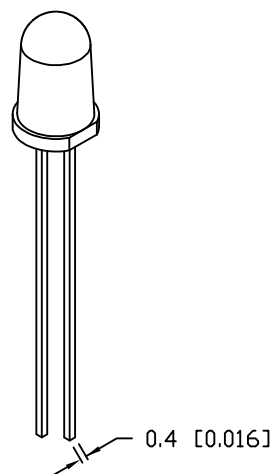
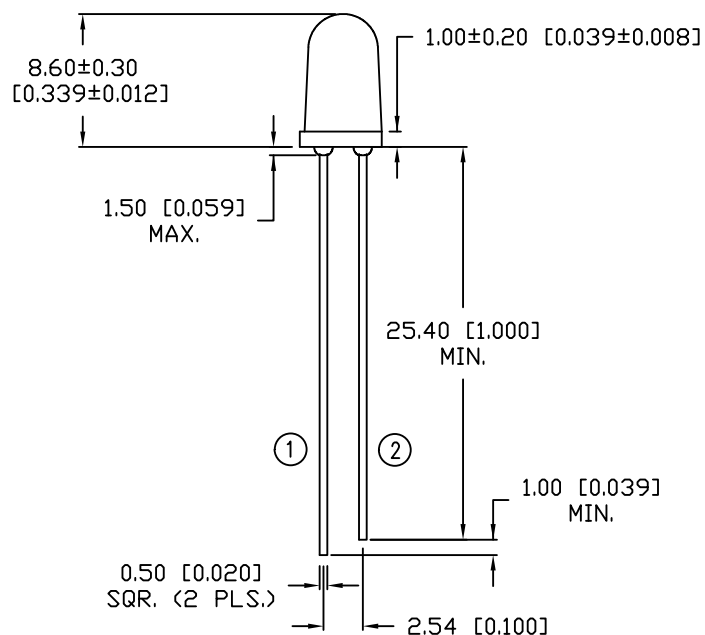
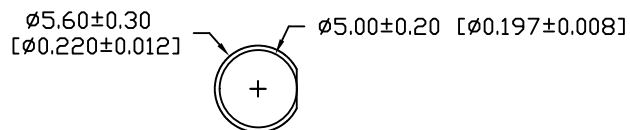


PART NUMBER  
OED-CL50593C22

REV.  
B

REV.	E.C.N. NUMBER AND REVISION COMMENTS	DATE
A	E.C.N. #10BRDR. & REDRAWN IN 3D.	12.19.02
B	ECN-Lumex20160009	05.13.16



# ELECTRO-OPTICAL CHARACTERISTICS $T_A=25^{\circ}\text{C}$

PARAMETER	MIN	TYP	MAX	UNITS	TEST COND
PEAK WAVELENGTH		875		nm	$I_f=20\text{mA}$
SPECTRAL BANDWIDTH		80		nm	$I_f=20\text{mA}$
FORWARD VOLTAGE		1.3	1.6	$V_f$	
REVERSE VOLTAGE			5.0	$V_r$	$I_r=10\mu\text{A}$
RADIANT INTENSITY	11	25		$\text{mW/str}$	$I_f=20\text{mA}$
HALF ANGLE		20		deg	$I_f=20\text{mA}$
EPOXY LENS FINISH: WATER CLEAR					

# LIMITS OF SAFE OPERATION AT $25^{\circ}\text{C}$

PARAMETER	MAX	UNITS
PEAK FORWARD CURRENT*	1	A
FORWARD CURRENT	100	mA
POWER DISSIPATION	150	mW
DERATE FROM $25^{\circ}\text{C}$	-1.2	$\text{mW}/^{\circ}\text{C}$
OPERATING TEMPERATURE	-40 TO +85	$^{\circ}\text{C}$
STORAGE TEMPERATURE	-40 TO +100	$^{\circ}\text{C}$
SOLDERING TEMP. (NOTES.1)	+260/3 SEC.	$^{\circ}\text{C}$

\*  $t_p < 100\mu\text{s}$ ,  $t_p/T=0.01$

NOTES:  
1. 2mm BELOW PACKAGE BASE

\*UNLESS OTHERWISE SPECIFIED TOLERANCES PER DECIMAL PRECISION ARE: X=±1 (±0.039), X.X=±0.5 (±0.020), X.XX=±0.25 (±0.010), X.XXX=±0.127 (±0.005). LEAD SIZE=±0.05 (±0.002), LEAD LENGTH=±0.75 (±0.030). MIN= +DECIMAL PRECISION -0.00 MAX= +0.00 -DECIMAL PRECISION

REV.	PART NUMBER
B	OED-CL50593C22

T-5mm (T-1 3/4) 875nm INFRARED LED,  
WATER CLEAR LENS

**CONFIDENTIAL INFORMATION**  
THE INFORMATION CONTAINED IN THIS DOCUMENT IS THE PROPERTY OF LUMEX INC. EXCEPT AS SPECIFICALLY AUTHORIZED IN WRITING BY LUMEX INC., THE HOLDER OF THIS DOCUMENT SHALL KEEP ALL INFORMATION CONTAINED HEREIN CONFIDENTIAL AND SHALL PROTECT SAME IN WHOLE OR IN PART FROM DISCLOSURE AND DISSEMINATION TO ALL THIRD PARTIES.

**RELIABILITY NOTE**  
OUR MANY YEARS OF EXPERIENCE DATA ACCUMULATION INDICATE THAT SOLDER HEAT IS A MAJOR CAUSE OF EARLY AND FUTURE FAILURE. PLEASE PAY ATTENTION TO YOUR SOLDERING PROCESS.

**LUMEX**  
Creating LED and LCD Solutions Together™  
425 N. GARY AVE.  
CAROL STREAM, IL 60188  
PHONE: 800-278-5666  
FAX: 630-315-2152  
WEB: www.lumex.com

DRAWN BY: E.C.	CHECKED BY: G.Y.	APPROVED BY: Ray	DATE: 05.13.16 PAGE: 1 OF 1 SCALE: N/A
-------------------	---------------------	---------------------	--

# Mouser Electronics

Authorized Distributor

Click to View Pricing, Inventory, Delivery & Lifecycle Information:

Lumex:

[OED-CL50593C22](#)