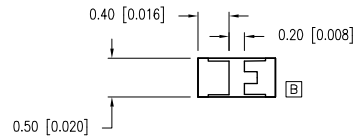
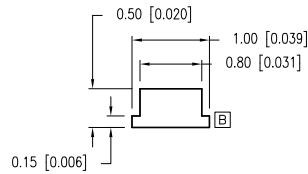
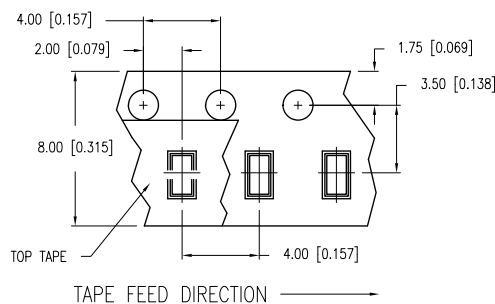
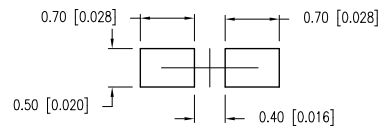


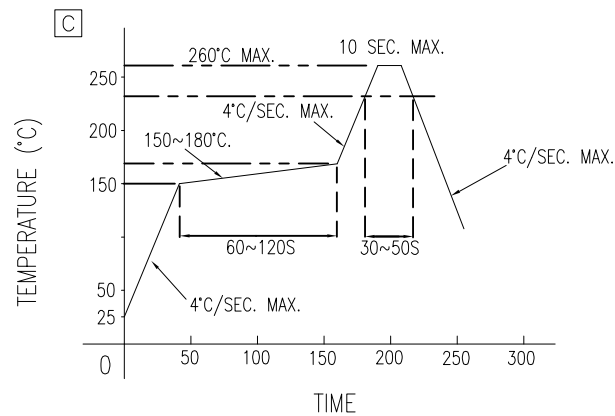
PART NUMBER	SML-LX0402UPGC-TR	REV.	E
DATE	E.C.N. NUMBER AND REVISION COMMENTS		REV.
3.14.03	E.C.N. #10967		A
8.10.04	E.C.N. #11157		B
12.03.04	E.C.N. #11148		C
3.05.09	E.C.N. #11508		D
9.05.16	ECN-Lumex201600008		E



RECOMMENDED SOLDER PAD LAYOUT



LEAD FREE REFLOW PROFILE



TOTAL TIME ABOVE 220°C IS 60 SECONDS MAX.

ELECTRO-OPTICAL CHARACTERISTICS $T_A=25^\circ\text{C}$

PARAMETER	MIN	TYP	MAX	UNITS	TEST COND
PEAK WAVELENGTH		515		nm	$I_f=20\text{mA}$
FORWARD VOLTAGE		3.3	4.0	V_f	$I_f=20\text{mA}$
REVERSE VOLTAGE			5.0	V_r	$I_r=50\mu\text{A}$
[B] LUMINOUS INTENSITY		450		mcad	$I_f=20\text{mA}$
VIEWING ANGLE		120		2 theta1/2	
EMITTED COLOR:	GREEN				
EPOXY LENS FINISH:	WATER CLEAR				

LIMITS OF SAFE OPERATION AT 25°C PERCHIP

PARAMETER	MAX	UNITS
PEAK FORWARD CURRENT*	150	mA
FORWARD CURRENT	25	mA
POWER DISSIPATION	102.5	mW
[B] OPERATING TEMP.	-40 TO +85	°C
STORAGE TEMP.	-40 TO +85	°C

* $T < 10\mu\text{s}$

NOTES:

- PARTS PACKAGED IN CONDUCTIVE COVER AND CARRIER TAPE.
- THE CATHODE IS ORIENTATED TOWARDS THE TAPE SPROCKET HOLE.

CAUTION: STATIC SENSITIVE DEVICE
FOLLOW PROPER E.S.D. HANDLING PROCEDURES
WHEN WORKING WITH THIS PART.

[D] CAUTION: MOISTURE SENSITIVE DEVICE
PER JEDEC LEVEL 3 STANDARDS

*UNLESS OTHERWISE SPECIFIED TOLERANCES PER DECIMAL PRECISION ARE: X=±1 (±0.039), X.X=±0.5 (±0.020), X.XX=±0.25 (±0.010), X.XXX=±0.127 (±0.005). LEAD SIZE=±0.05 (±0.002), LEAD LENGTH=±0.75 (±0.030). MIN.= +DECIMAL PRECISION -0.00 MAX.= +0.00 -DECIMAL PRECISION

	425 N. GARY AVE. CAROL STREAM, IL 60188 PHONE: 800-278-5666 FAX: 630-315-2152 WEB: WWW.LUMEX.COM	1.0mm X 0.5mm SURFACE MOUNT LED, 525nm ULTRA PURE GREEN, WATER CLEAR LENS, TAPE AND REEL.		DATE: 09.05.16	DRAWN BY: E.C.
		THE SPECIFICATIONS MAY CHANGE AT ANY TIME WITHOUT NOTICE DUE TO NEW MATERIALS OR PRODUCT IMPROVEMENT.		PAGE: 1 OF 1	CHKD BY: G.Y.
		CONFIDENTIAL INFORMATION THE INFORMATION CONTAINED IN THIS DOCUMENT IS THE PROPERTY OF LUMEX INC. EXCEPT AS SPECIFICALLY AUTHORIZED IN WRITING BY LUMEX INC., THE HOLDER OF THIS DOCUMENT SHALL KEEP ALL INFORMATION CONTAINED HEREIN CONFIDENTIAL AND SHALL PROTECT SAME IN WHOLE OR IN PART FROM DISCLOSURE AND DISSEMINATION TO ALL THIRD PARTIES.		SCALE: N/A	APRVD BY: Ray
				UNIT: mm [INCH]	Ⓢ Ⓜ

Mouser Electronics

Authorized Distributor

Click to View Pricing, Inventory, Delivery & Lifecycle Information:

Lumex:

[SML-LX0402UPGC-TR](#)