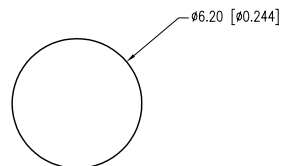


PANEL CUTOUT



| PART NUMBER | SSI-LXR3612ID-150 | REV. | F |
|-------------|-------------------------------------|------|------|
| DATE | E.C.N. NUMBER AND REVISION COMMENTS | | REV. |
| 11.17.92 | UPDATED SAFE OPER. SPECS. | | A |
| 09.19.94 | UPDATED SAFE OPER. SPECS AND NOTES. | | B |
| 05.16.95 | UPDATED DWG AND NOTES. | | C |
| 06.23.95 | CHG'D WIRE SIZE. | | D |
| 10.30.01 | E.C.N. #10BRDR. & REDRAWN IN 3D. | | E |
| 7.14.11 | E.C.N. #10BRDR. & REDRAWN. | | F |

| ELECTRO-OPTICAL CHARACTERISTICS Ta=25°C | | | If=20mA | |
|---|--------------|-----|---------|----------|
| PARAMETER | MIN | TYP | MAX | UNITS |
| PEAK WAVELENGTH | | 635 | | nm |
| FORWARD VOLTAGE | | 2.0 | 2.5 | Vf |
| REVERSE VOLTAGE | 5.0 | | | Vr |
| AXIAL INTENSITY | | 30 | | mcd |
| VIEWING ANGLE | | 60 | | 2x theta |
| EMITTED COLOR: | RED | | | |
| EPOXY LENS FINISH: | RED DIFFUSED | | | |

[B] LIMITS OF SAFE OPERATION AT 25°C

| PARAMETER | MAX | UNITS |
|-----------------------|------------|-----------|
| PEAK FORWARD CURRENT* | 150 | mA |
| STEADY CURRENT | 30 | mA |
| POWER DISSIPATION | 105 | mW |
| DERATE FROM 25°C | -1.6 | mW/°C |
| OPERATING TEMP. | -40 TO +85 | °C |
| STORAGE TEMP. | -40 TO +85 | °C |
| SOLDERING TEMP. | +260 | °C |
| 2.0mm FROM BODY | 3 | SEC. MAX. |

* t<10μs

[D][C][B] NOTES:

1. SSL-LX3054ID, RED LED, TRIM LEADS TO 5mm.
2. SSI-LXR3612 HOLDER, CHROME FINISH.
3. SSH-LXH1612BSG, BUSHING, INSERT AND CRIMP.
4. ANODE LEAD: LXP-WST26RTOC, 26 AWG. STRANDED, RED INSULATION, CUT TO 157mm LONG, STRIP ENDS 2mm AND 9.5mm.
5. CATHODE LEAD: LXP-WST26BLTOC, 26 AWG. STRANDED, BLACK INSULATION, CUT TO 157mm LONG, STRIP ENDS 2mm AND 9.5mm.
6. SOLDER LED LEADS TO WIRE LEADS.

*UNLESS OTHERWISE SPECIFIED TOLERANCES PER DECIMAL PRECISION ARE: X=±1 (±0.039), X.X=±0.5 (±0.020), X.XX=±0.25 (±0.010), X.XXX=±0.127 (±0.005). LEAD SIZE=±0.05 (±0.002), LEAD LENGTH=±0.75 (±0.030). MIN.= +DECIMAL PRECISION MAX.= +0.00 -DECIMAL PRECISION

UNCONTROLLED DOCUMENT

T-3mm (T-1) 635nm RED PANEL INDICATOR, RED DIFFUSED LENS, 6" WIRE LEADS.

THE SPECIFICATIONS MAY CHANGE AT ANY TIME WITHOUT NOTICE DUE TO NEW MATERIALS OR PRODUCT IMPROVEMENT.

CONFIDENTIAL INFORMATION
THE INFORMATION CONTAINED IN THIS DOCUMENT IS THE PROPERTY OF LUMEX INC. EXCEPT AS SPECIFICALLY AUTHORIZED IN WRITING BY LUMEX INC., THE HOLDER OF THIS DOCUMENT SHALL
KEEP ALL INFORMATION CONTAINED HEREIN CONFIDENTIAL AND SHALL PROTECT SAME IN WHOLE OR IN PART FROM DISCLOSURE AND DISSEMINATION TO ALL THIRD PARTIES.

Mouser Electronics

Authorized Distributor

Click to View Pricing, Inventory, Delivery & Lifecycle Information:

Lumex:

[SSI-LXR3612ID-150](#)