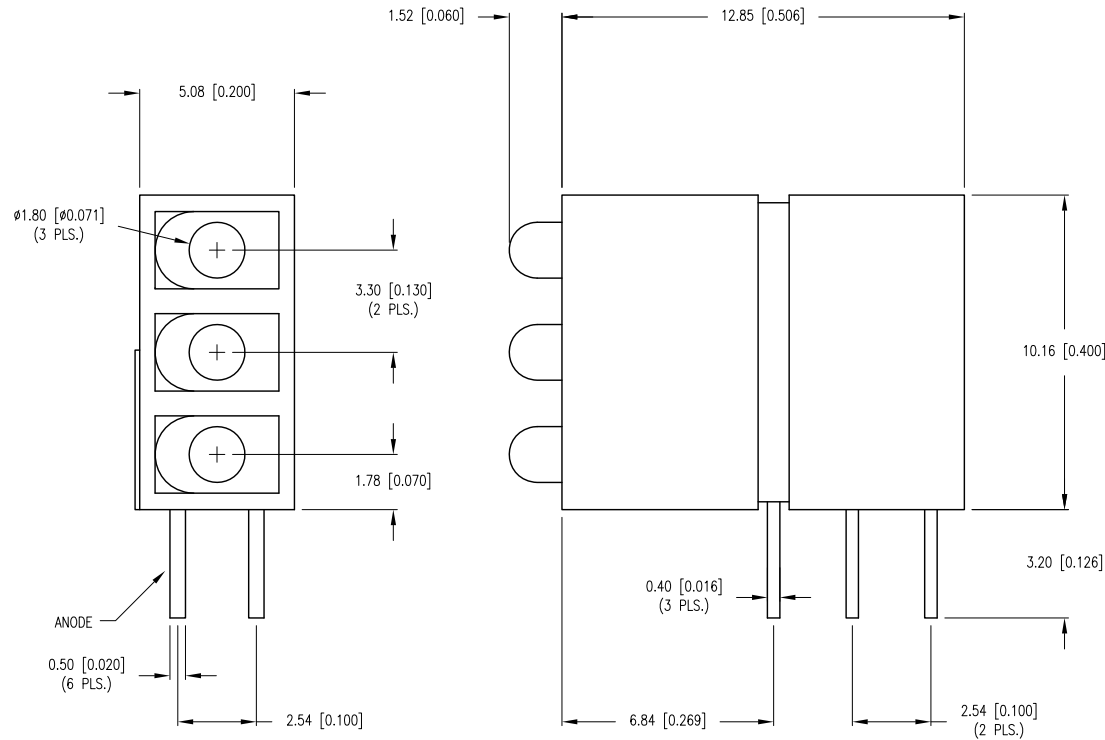


PART NUMBER	SSF-LXH513IIGD	REV.	A
DATE	E.C.N. NUMBER AND REVISION COMMENTS		REV.
02.04.13	E.C.N. #10BRDR. & REDRAWN/ E.C.N. #11851.		A



ELECTRO-OPTICAL CHARACTERISTICS Ta=25°C If=20mA					
PARAMETER	RED	RED	GREEN	UNITS	TEST COND
PEAK WAVELENGTH	635	635	565	nm	
FORWARD VOLTAGE (TYP.)	2.0	2.0	2.2	Vf	
FORWARD VOLTAGE (MAX.)	2.5	2.5	2.6	Vf	
REVERSE VOLTAGE	5.0	5.0	5.0	Vr	Ir=100μA
AXIAL INTENSITY (TYP)	6	6	6	mcd	If=20mA
VIEWING ANGLE	70	70	70	2x theta	
LED POSITION:	1	2	3		
LENS FINISH:	DIFFUSED SAME AS EMITTED COLOR				

LIMITS OF SAFE OPERATION AT 25°C			
PARAMETER	COLORS	MAX	UNITS
PEAK FORWARD CURRENT*		150	mA
STEADY CURRENT	(R/G)	30/25	mA
POWER DISSIPATION		105	mW
DERATE FROM 25°C		-1.6	mW/°C
OPERATING TEMP.		-40 TO +85	°C
STORAGE TEMP.		-40 TO +85	°C
SOLDERING TEMP.		+260	°C
2.0mm FROM BODY		3	SEC.

\* t&lt;10μS

\*UNLESS OTHERWISE SPECIFIED TOLERANCES PER DECIMAL PRECISION ARE: X=±1 (±0.039), X.X=±0.5 (±0.020), X.XX=±0.25 (±0.010), X.XXX=±0.127 (±0.005). LEAD SIZE=±0.05 (±0.002), LEAD LENGTH=±0.75 (±0.030). MIN= <sup>+DECIMAL PRECISION</sup><sub>-0.00</sub> MAX= <sup>+0.00</sup><sub>-DECIMAL PRECISION</sub>

UNCONTROLLED DOCUMENT

# Mouser Electronics

Authorized Distributor

Click to View Pricing, Inventory, Delivery & Lifecycle Information:

Lumex:

[SSF-LXH513IIGD](#)