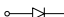
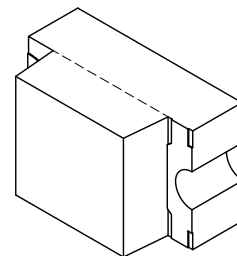
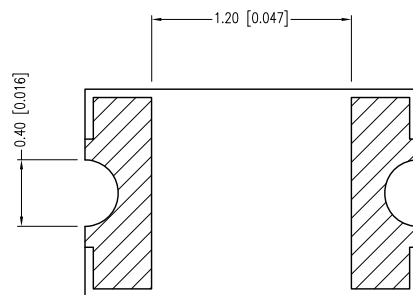
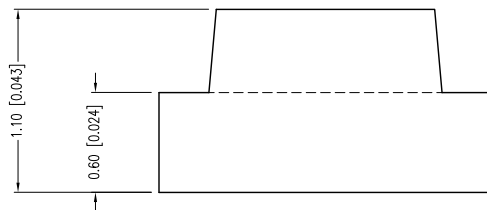
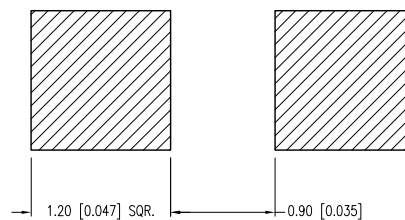


ANODE  CATHODE



RECOMMENDED SOLDER PAD LAYOUT



PART NUMBER	SML-LX0805GC-TR	REV.	G
DATE	E.C.N. NUMBER AND REVISION COMMENTS		REV.
08.26.98	E.C.N. #10BRDR. & REDRAWN.		A
07.18.00	E.C.N. #10644 & REDRAWN IN 3D.		B
05.09.02	E.C.N. #10862.		C
03.14.03	E.C.N. #10967.		D
03.06.09	E.C.N. #11148.		E
01.17.05	E.C.N. #11508.		F
06.20.11	E.C.N. #10BRDR. & REDRAWN.		G

ELECTRO-OPTICAL CHARACTERISTICS TA =25°C If=20mA

PARAMETER	MIN	TYP.	MAX	UNITS	TEST COND
PEAK WAVELENGTH		565		nm	
FORWARD VOLTAGE		2.2	2.8	Vf	
REVERSE VOLTAGE	5.0			Vr	Ir=100μA
AXIAL INTENSITY		10		mcd	If=20mA
VIEWING ANGLE		140		2x theta	
EMITTED COLOR:	GREEN				
EPOXY LENS FINISH:	WATER CLEAR				

LIMITS OF SAFE OPERATION AT 25°C

PARAMETER	MAX	UNITS
PEAK FORWARD CURRENT*	160	mA
STEADY CURRENT	30	mA
POWER DISSIPATION	100	mW
DERATE FROM 25°C	-1.2	mW/°C
OPERATING TEMP.	-40 TO +85	°C
STORAGE TEMP.	-40 TO +85	°C

* t<10μS

CAUTION: MOISTURE SENSITIVE DEVICE
PER JEDEC LEVEL 2 STANDARDS

*UNLESS OTHERWISE SPECIFIED TOLERANCES PER DECIMAL PRECISION ARE: X=±1 (±0.039), X.X=±0.5 (±0.020), X.XX=±0.25 (±0.010), X.XXX=±0.127 (±0.005). LEAD SIZE=±0.05 (±0.002), LEAD LENGTH=±0.75 (±0.030). MIN.=^{+DECIMAL PRECISION}_{-0.00} MAX.=^{+0.00}_{-DECIMAL PRECISION}

UNCONTROLLED DOCUMENT



290 E. HELEN ROAD
PALATINE, IL 60067-6976
PHONE: +1.847.359.2790
FAX: +1.847.359.6538
WEB: WWW.LUMEX.COM
MEMBER OF ITW PHOTONICS GROUP

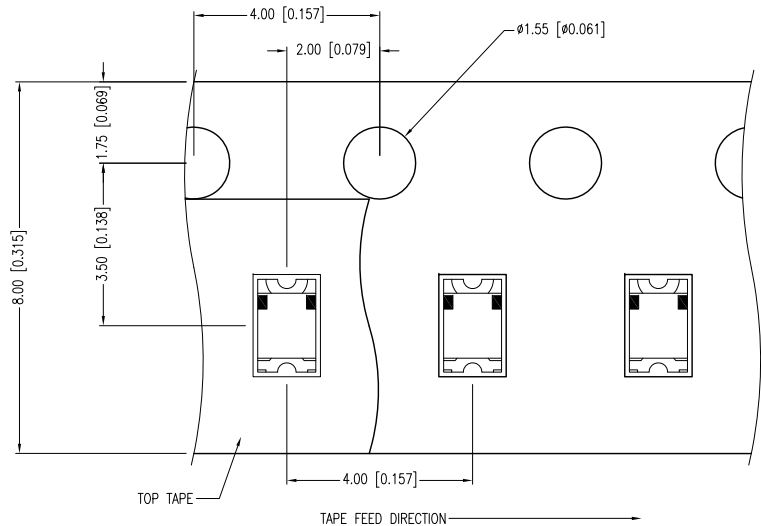
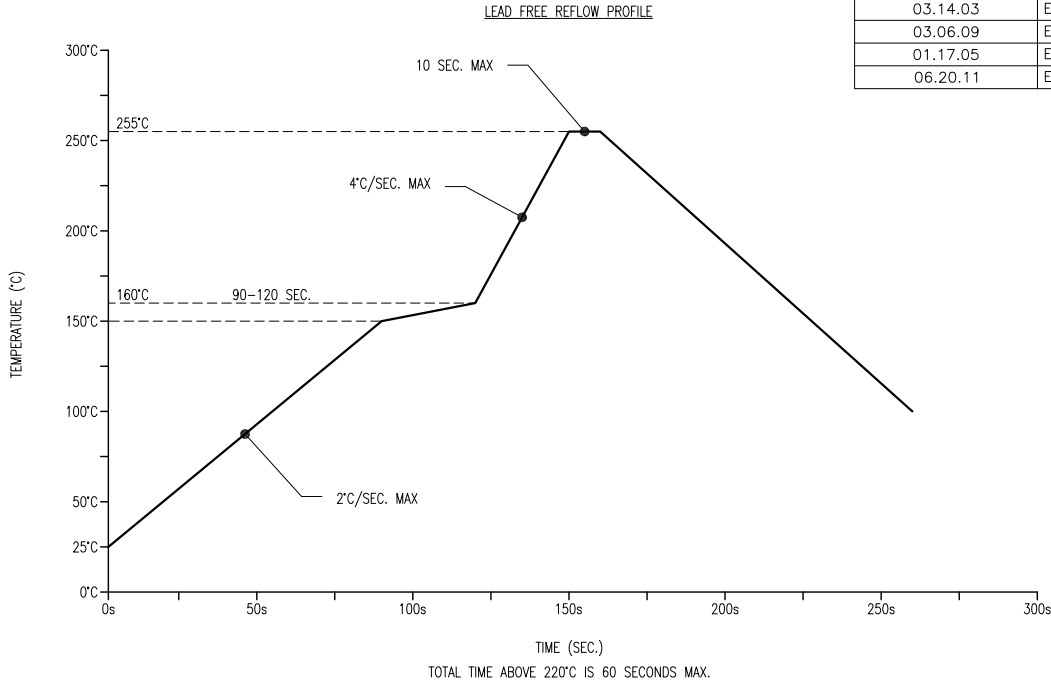
2.0mm X 1.25mm PCB SURFACE MOUNT, 565nm GREEN LED, WATER CLEAN LENS, TAPE & REEL, 3K PER REEL.

THE SPECIFICATIONS MAY CHANGE AT ANY TIME WITHOUT NOTICE DUE TO NEW MATERIALS OR PRODUCT IMPROVEMENT.

CONFIDENTIAL INFORMATION
THE INFORMATION CONTAINED IN THIS DOCUMENT IS THE PROPERTY OF LUMEX INC. EXCEPT AS SPECIFICALLY AUTHORIZED IN WRITING BY LUMEX INC., THE HOLDER OF THIS DOCUMENT SHALL KEEP ALL INFORMATION CONTAINED HEREIN CONFIDENTIAL AND SHALL PROTECT SAME IN WHOLE OR IN PART FROM DISCLOSURE AND DISSEMINATION TO ALL THIRD PARTIES.

DATE:	06.20.11	DRAWN BY:	AB
PAGE:	1 OF 2	CHKD BY:	KF
SCALE:	NTS	APRVD BY:	KF
UNIT:	mm [INCH]		Ⓟ

PART NUMBER	SML-LX0805GC-TR	REV.	G
DATE	E.C.N. NUMBER AND REVISION COMMENTS		REV.
08.26.98	E.C.N. #10BRDR. & REDRAWN.		A
07.18.00	E.C.N. #10644 & REDRAWN IN 3D.		B
05.09.02	E.C.N. #10862.		C
03.14.03	E.C.N. #10967.		D
03.06.09	E.C.N. #11148.		E
01.17.05	E.C.N. #11508.		F
06.20.11	E.C.N. #10BRDR. & REDRAWN.		G



NOTES:

1. POLARITY MARK IS ORIENTED TOWARDS TAPE SPROCKET HOLE.

Mouser Electronics

Authorized Distributor

Click to View Pricing, Inventory, Delivery & Lifecycle Information:

Lumex:

[SML-LX0805GC-TR](#)