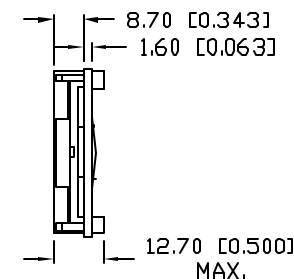
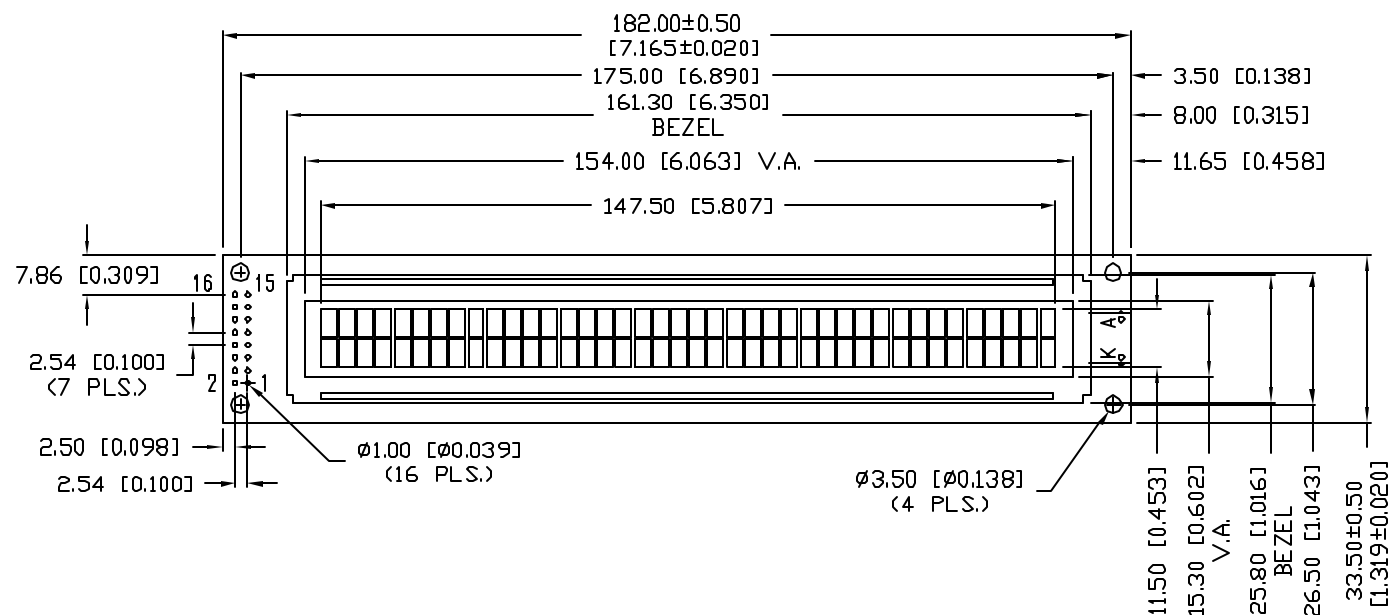
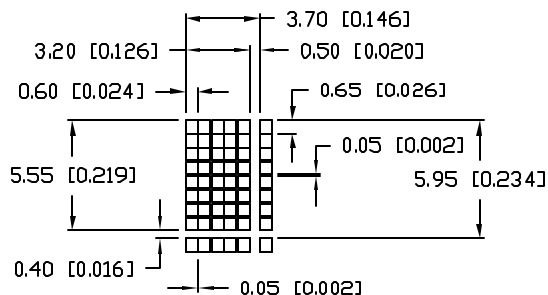


CAUTION: STATIC SENSITIVE DEVICE
FOLLOW PROPER E.S.D. HANDLING PROCEDURES
WHEN WORKING WITH THIS PART.

CHARACTER DETAIL



*UNLESS OTHERWISE SPECIFIED TOLERANCES PER DECIMAL PRECISION ARE: X=±1 (±0.039), XX=±0.5 (±0.020), XXX=±0.25 (±0.010), XXXX=±0.127 (±0.005). LEAD SIZE=±0.05 (±0.002), LEAD LENGTH=±0.75 (±0.030), MIN=+DECIMAL PRECISION MAX.=+0.00 -DECIMAL PRECISION

REV.

PART NUMBER

LCM-H04002DWN

5 x 8 DOT MATRIX 40 x 2 LCD CHARACTER MODULE,
5.55mm CHARACTER HEIGHT, 1/16 DUTY, 1/5 BIAS,
FSTN BLACK, NEGATIVE IMAGE YELLOW-GREEN LED, 6:00 VIEW

CONFIDENTIAL INFORMATION

THE INFORMATION CONTAINED IN THIS DOCUMENT IS THE PROPERTY OF LUMEX INC. EXCEPT AS SPECIFICALLY AUTHORIZED IN WRITING BY LUMEX INC., THE HOLDER OF THIS DOCUMENT SHALL KEEP ALL INFORMATION CONTAINED HEREIN CONFIDENTIAL AND SHALL PROTECT SAME IN WHOLE OR IN PART FROM DISCLOSURE AND DISSEMINATION TO ALL THIRD PARTIES.

RELIABILITY NOTE

OUR MANY YEARS OF EXPERIENCE DATA ACCUMULATION INDICATE THAT SOLDER HEAT IS A MAJOR CAUSE OF EARLY AND FUTURE FAILURE. PLEASE PAY ATTENTION TO YOUR SOLDERING PROCESS.



290 E. HELEN ROAD
PALATINE, IL 60067-6976
PHONE: +1.847.359.2790
US WEB: www.lumex.com
TW WEB: www.lumex.com.tw

DRAWN BY:

JC

CHECKED BY:

APPROVED BY:

DATE: 5.2.07

PAGE: 1 OF 2

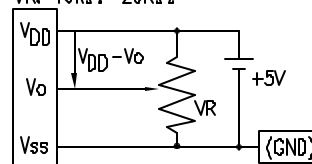
SCALE: N/A

Pb

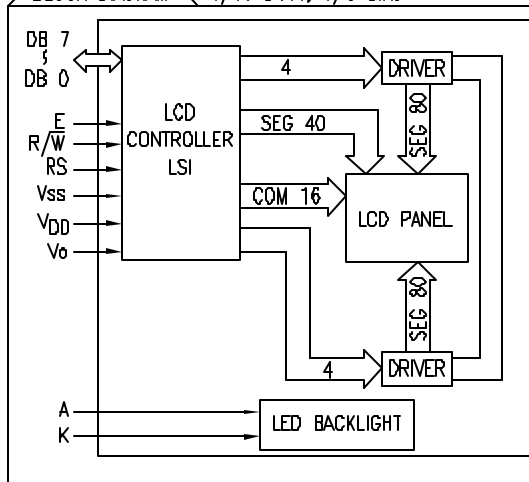
PIN CONFIGURATION

PIN NO.	SYMBOL	LEVEL	FUNCTION
1	Vss	—	POWER SUPPLY
2	VDD	—	
3	Vo	—	
4	RS	H/L	REGISTER SELECT SIGNAL H: DATA INPUT L: INSTRUCTION INPUT
5	R/W	H/L	H: DATA READ (MODULE-->MPU) L: DATA WRITE (MODULE<--MPU)
6	E	H,H->L	ENABLE
7~14	DB0~DB7	H/L	DATA BUS—SOFTWARE SELECTABLE 4 OR 8 BIT MODE.
15	A	—	ANODE
16	K	—	CATHODE

VDD-Vo: LCD DRIVING VOLTAGE
VR: 10KΩ~20KΩ



BLOCK DIAGRAM 1/16 DUTY, 1/5 BIAS



ELECTRICAL CHARACTERISTICS

VDD=4.7V to 5.3V, TA=25°C

ITEM	SYMBOL	CONDITION	STANDARD VALUE			UNIT
			MIN.	TYP.	MAX.	
SUPPLY VOLTAGE FOR LOGIC	VDD-Vss	—	—	5.0	—	V
SUPPLY CURRENT FOR LOGIC	IDD	VDD=5V	—	2.0	3.0	mA
INPUT VOLTAGE	HIGH	VIH	—	2.2	—	VDD
		VIL	—	0	—	0.6
OUTPUT VOLTAGE	HIGH	VOH	—	2.4	—	V
		VOL	—	—	—	0.4
LED BACKLIGHT	VOLTAGE	Vf	—	—	4.2	4.6
	CURRENT	If	—	—	210	—
	POWER CONSUMPTION	PD	—	—	882	—
	LUMINOUS	L	If=210mA	70	—	cd/m ²
	COLOR	—	—	—	565	—

ABSOLUTE MAXIMUM RATINGS

ITEM	SYMBOL	TEST CONDITION	STANDARD VALUE		UNIT
			MIN	MAX	
SUPPLY VOLTAGE FOR LOGIC	VDD-Vss	Ta=25°C	4.7	5.3	V
SUPPLY VOLTAGE FOR LCD DRIVE	VDD-Vo	—	4.2@50°C	4.8@0°C	V
INPUT VOLTAGE	Vi	Ta=25°C	Vss	VDD	V
OPERATING TEMPERATURE	Topr	LCM-H	-20	70	°C
STORAGE TEMPERATURE	Tstg	LCM-H	-30	85	°C

*UNLESS OTHERWISE SPECIFIED TOLERANCES PER DECIMAL PRECISION ARE: X=±1 (±0.039), X.X=±0.5 (±0.020), X.XX=±0.25 (±0.010), X.XXX=±0.127 (±0.005). LEAD SIZE=±0.05 (±0.002), LEAD LENGTH=±0.75 (±0.030). MIN.= +DECIMAL PRECISION -0.00 MAX.= +0.00 -DECIMAL PRECISION

REV.

PART NUMBER

LCM-H04002DWN

5 x 8 DOT MATRIX 40 x 2 LCD CHARACTER MODULE,
5.55mm CHARACTER HEIGHT, 1/16 DUTY, 1/5 BIAS,
FSTN BLAC NEGATIVE IMAGE, YELLOW-GREEN LED, 6:00 VIEW.

CONFIDENTIAL INFORMATION

THE INFORMATION CONTAINED IN THIS DOCUMENT IS THE PROPERTY OF LUMEX INC. EXCEPT AS SPECIFICALLY AUTHORIZED IN WRITING BY LUMEX INC., THE HOLDER OF THIS DOCUMENT SHALL KEEP ALL INFORMATION CONTAINED HEREIN CONFIDENTIAL AND SHALL PROTECT SAME IN WHOLE OR IN PART FROM DISCLOSURE AND DISSEMINATION TO ALL THIRD PARTIES.

RELIABILITY NOTE

OUR MANY YEARS OF EXPERIENCE DATA ACCUMULATION INDICATE THAT SOLDER HEAT IS A MAJOR CAUSE OF EARLY AND FUTURE FAILURE. PLEASE PAY ATTENTION TO YOUR SOLDERING PROCESS.



290 E. HELEN ROAD
PALATINE, IL 60067-6976
PHONE: +1.847.359.2790
US WEB: www.lumex.com
TW WEB: www.lumex.com.tw

DRAWN BY:

JG

CHECKED BY:

APPROVED BY:

DATE: 5.2.07

PAGE: 2 OF 2

SCALE: N/A

Mouser Electronics

Authorized Distributor

Click to View Pricing, Inventory, Delivery & Lifecycle Information:

Lumex:

[LCM-H04002DWN](#)