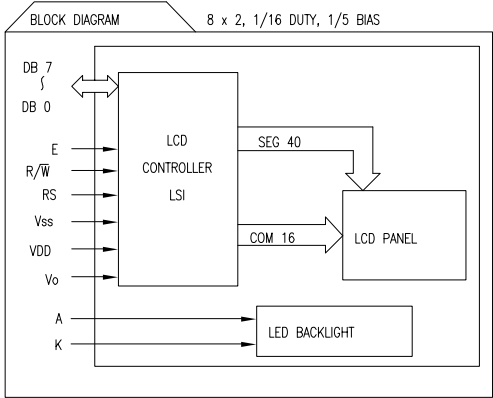
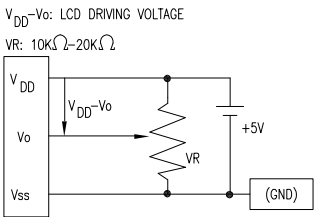


DATE: 06.01.10	DRAWN BY: JH
PAGE: 1 OF 2	CHKD BY: BC
SCALE: N/A	APRVD BY: KF
UNIT: mm [INCH]	(Pb)

PIN CONFIGURATION				
PIN NO.	SYMBOL	LEVEL	FUNCTION	
1	V _{SS}	—	POWER SUPPLY	GND (0V)
2	V _{DD}	—		5V
3	V _O	—		FOR LCD DRIVE
4	RS	H/L	REGISTER SELECT SIGNAL H: DATA INPUT L: INSTRUCTION INPUT	
5	R/ \overline{W}	H/L	H: DATA READ (MODULE-->MPU) L: DATA WRITE (MODULE<--MPU)	
6	E	H,H->L	ENABLE	
7~14	DB0~DB7	H/L	DATA BUS—SOFTWARE SELECTABLE 4 OR 8 BIT MODE.	



ELECTRICAL CHARACTERISTICS		V _{DD} =4.7V to 5.3V, T _A =25°C					
ITEM		SYMBOL	CONDITION	STANDARD VALUE			UNIT
				MIN.	TYP.	MAX.	
SUPPLY VOLTAGE FOR LOGIC		V _{DD} -Vss	–	–	5.0	–	V
SUPPLY CURRENT FOR LOGIC		I _{DD}	V _{DD} =5V	–	2.0	3.0	mA
INPUT VOLTAGE	HIGH	V _{IH}	–	2.2	–	V _{DD}	V
	LOW	V _{IL}	–	0	–	0.6	V
OUTPUT VOLTAGE	HIGH	V _{OH}	–	2.4	–	–	V
	LOW	V _{OL}	–	–	–	0.4	V
*LED BACKLIGHT	VOLTAGE	V _f	I _f =70mA	–	4.5	5.0	V
	CURRENT	I _f	–	–	70	110	mA
	POWER CUNSUMPTION	PD	–	–	315	–	mW
	LUMINOUS	L	I _f =70mA	70	–	–	cd/m ²
	COLOR	–	–	–	–	–	nm

*ONLY APPLIES TO MODULES WITH BACKLIGHT

ABSOLUTE MAXIMUM RATINGS					
ITEM	SYMBOL	TEST CONDITION	STANDARD VALUE		UNIT
			MIN	MAX	
SUPPLY VOLTAGE FOR LOGIC	V _{DD} -Vss	Ta=25°C	4.7	5.3	V
SUPPLY VOLTAGE FOR LCD DRIVE	V _{DD} -Vo	–	4.2@50°C	4.8@0°C	V
INPUT VOLTAGE	V _I	Ta=25°C	Vss	V _{DD}	V
OPERATING TEMPERATURE	Topr	LCM-H	–20	70	°C
STORAGE TEMPERATURE	Tstg	LCM-H	–30	80	°C

Mouser Electronics

Authorized Distributor

Click to View Pricing, Inventory, Delivery & Lifecycle Information:

Lumex:

[LCM-H00802DSF](#)