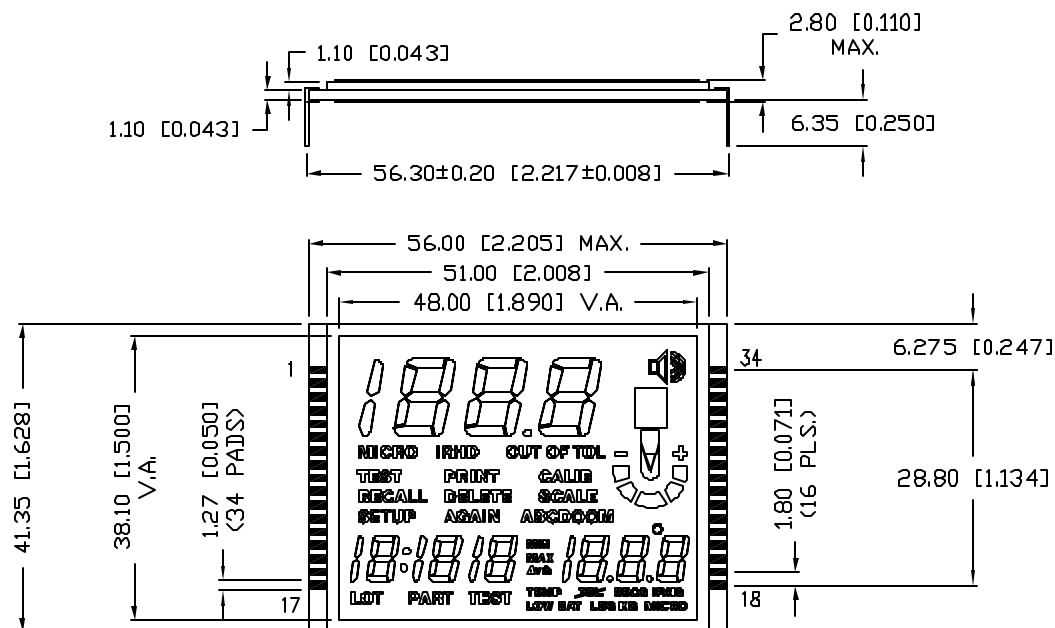


UNCONTROLLED DOCUMENT

PART NUMBER
LCD-S3X1M75TFREV.
AREV. E.C.N. NUMBER AND REVISION COMMENTS
A E.C.N. #11148.DATE
02.07.071.60 [0.063]
MICRO1.10 [0.043]
AVG1.10 [0.043]
TEMP1.60 [0.063]
LOT

PIN	1	2	3	4	5	6	7	8	9	10	11	12	13	14	15	16	17
COM1	COM1				2F	2A	AGAIN	SETUP	5BC	6F	6A	8F	8A	10F	10A	B	C
COM2		COM2			2G	2B	DELETE	RECALL	LOT	6G	6B	8G	8B	10G	10B	MIN	D
COM3			COM3		2E	2C	PR	TEST(1)	PART	6E	6C	8E	8C	10E	10C	MAX	L1
COM4				COM4	2D	1BC	IRHD(1)	MICRO(1)	TEST(2)	6D	C1	8D	7BC	10D	9BC	AVG	L2
PIN	18	19	20	21	22	23	24	25	26	27	28	29	30	31	32	33	34
COM1	MICRO(2)	N/C	14A	14F	13A	13F	12A	12F	DEG	A	X4	X5	X10	4A	4F	3A	3F
COM2	KG	N/C	14B	14G	13B	13G	12B	12G	M	SCALE	X3	X7	X9	4B	4G	3B	3G
COM3	LBS	N/C	14C	14E	13C	13E	12C	12E	11BC	CALIB	X2	X6	X8	4C	4E	3C	3E
COM4	LOW BAT	N/C	IRHD(2)	14D	DP3	13D	DP2	12D	TEMP	OUT OF TOL	X1	SEGS	TOL	INT	4D	DP1	3D

CHARACTERISTICS	
FLUID TYPE	TN
BACKGROUND COLOR	GRAY
VIEWING DIRECTION	6:00
DISPLAY MODE	TRANSFLECTIVE
OPERATING VOLTAGE	3~5.0V A.C.
OPERATING TEMP.	0°C TO 50°C
STORAGE TEMP.	-20°C TO 70°C
DRIVING METHOD	1/4 DUTY, 1/3 BIAS
CONNECTION TYPE	34 PINS

*UNLESS OTHERWISE SPECIFIED TOLERANCES PER DECIMAL PRECISION ARE: X=±1 (±0.039), XX=±0.5 (±0.020), XXX=±0.25 (±0.010), XXXX=±0.127 (±0.005). LEAD SIZE=±0.05 (±0.002), LEAD LENGTH=±0.75 (±0.030). MIN= +DECIMAL PRECISION -0.00 MAX.= +0.00 -DECIMAL PRECISION

REV.
APART NUMBER
LCD-S3X1M75TFCUSTOM LCD PANEL, TN, TRANSFLECTIVE,
1/4" DUTY, 1/3 BIAS, BOTTOM VIEW, 34 PINS.

CONFIDENTIAL INFORMATION
THE INFORMATION CONTAINED IN THIS DOCUMENT IS THE PROPERTY OF LUMEX INC. EXCEPT AS SPECIFICALLY AUTHORIZED IN WRITING BY LUMEX INC., THE HOLDER OF THIS DOCUMENT SHALL KEEP ALL INFORMATION CONTAINED HEREIN CONFIDENTIAL AND SHALL PROTECT SAME IN WHOLE OR IN PART FROM DISCLOSURE AND DISSEMINATION TO ALL THIRD PARTIES.

RELIABILITY NOTE
OUR MANY YEARS OF EXPERIENCE DATA ACCUMULATION INDICATE THAT SOLDER HEAT IS A MAJOR CAUSE OF EARLY AND FUTURE FAILURE. PLEASE PAY ATTENTION TO YOUR SOLDERING PROCESS.



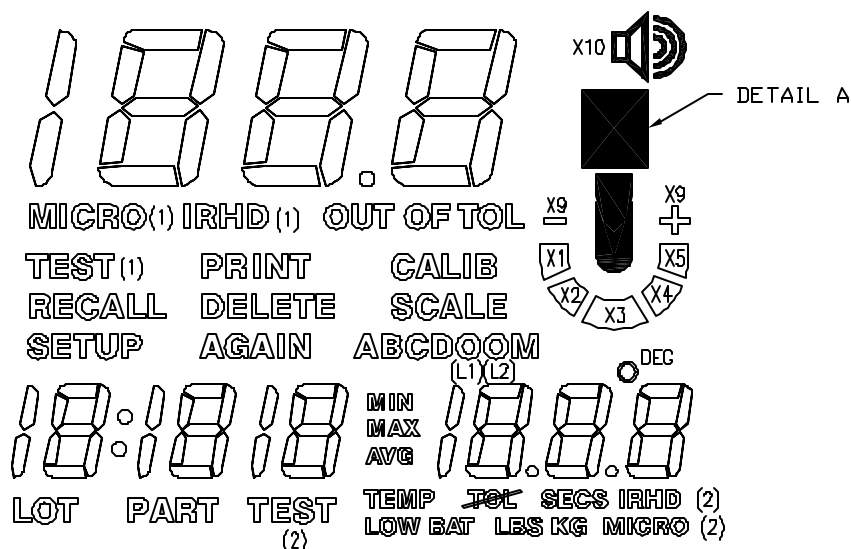
290 E. HELEN ROAD
PALATINE, IL 60067-6976
PHONE: +1.847.359.2790
US WEB: www.lumex.com
TW WEB: www.lumex.com.tw

DRAWN BY:
JC

CHECKED BY:

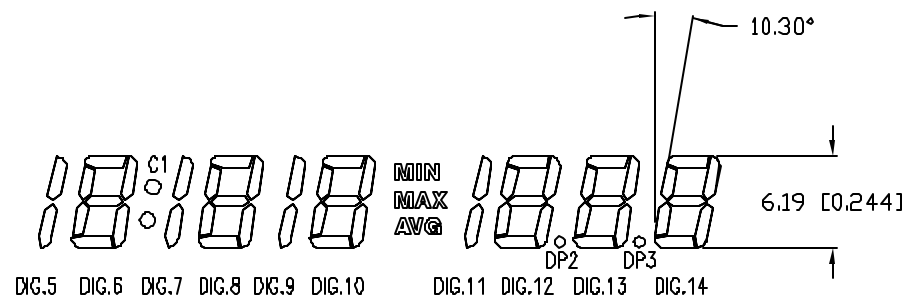
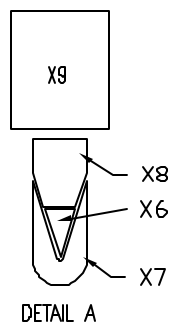
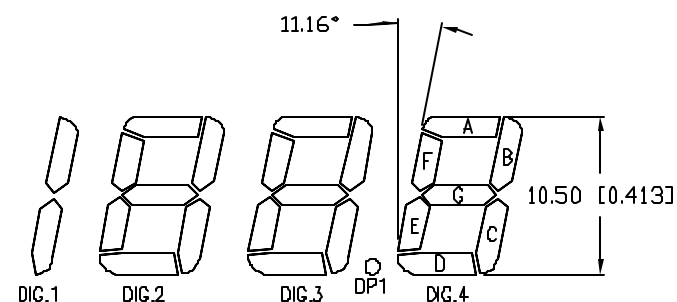
APPROVED BY:

DATE: 7.9.99
PAGE: 1 OF 1
SCALE: N/A



NOTES:

1. "PR" & "INT" ARE SEPERATE SEGMENTS.
2. "X9", "-", "+", "X" ARE CONNECTED AS SINGLE SEGMENT.
3. A B C D O O M ARE SEPERATE SEGMENTS.



*UNLESS OTHERWISE SPECIFIED TOLERANCES PER DECIMAL PRECISION ARE: X=±1 (±0.039), X.X=±0.5 (±0.020), X.XX=±0.25 (±0.010), X.XXX=±0.127 (±0.005). LEAD SIZE=±0.05 (±0.002), LEAD LENGTH=±0.75 (±0.030). MIN.=+DECIMAL PRECISION MAX.=+0.00 -0.00 -DECIMAL PRECISION

REV.
APART NUMBER
LCD-S3X1M75TF

CUSTOM LCD PANEL, TN, TRANSFLECTIVE,
1/4" DUTY, 1/3 BIAS, BOTTOM VIEW, 34 PINS.

CONFIDENTIAL INFORMATION
THE INFORMATION CONTAINED IN THIS DOCUMENT IS THE PROPERTY OF LUMEX INC. EXCEPT AS SPECIFICALLY AUTHORIZED IN WRITING BY LUMEX INC., THE HOLDER OF THIS DOCUMENT SHALL KEEP ALL INFORMATION CONTAINED HEREIN CONFIDENTIAL AND SHALL PROTECT SAME IN WHOLE OR IN PART FROM DISCLOSURE AND DISSEMINATION TO ALL THIRD PARTIES.

RELIABILITY NOTE
OUR MANY YEARS OF EXPERIENCE DATA ACCUMULATION INDICATE THAT SOLDER HEAT IS A MAJOR CAUSE OF EARLY AND FUTURE FAILURE. PLEASE PAY ATTENTION TO YOUR SOLDERING PROCESS.



290 E. HELEN ROAD
PALATINE, IL 60067-6976
PHONE: +1.847.359.2790
US WEB: www.lumex.com
TW WEB: www.lumex.com.tw

DRAWN BY:

JG

CHECKED BY:

APPROVED BY:

DATE: 7.9.99

PAGE: 1 OF 1

SCALE: N/A

Mouser Electronics

Authorized Distributor

Click to View Pricing, Inventory, Delivery & Lifecycle Information:

Lumex:

[LCD-S3X1M75TF](#)