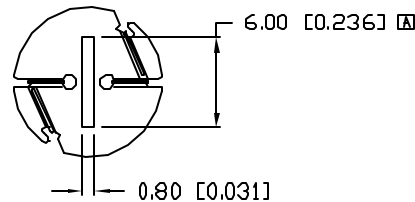
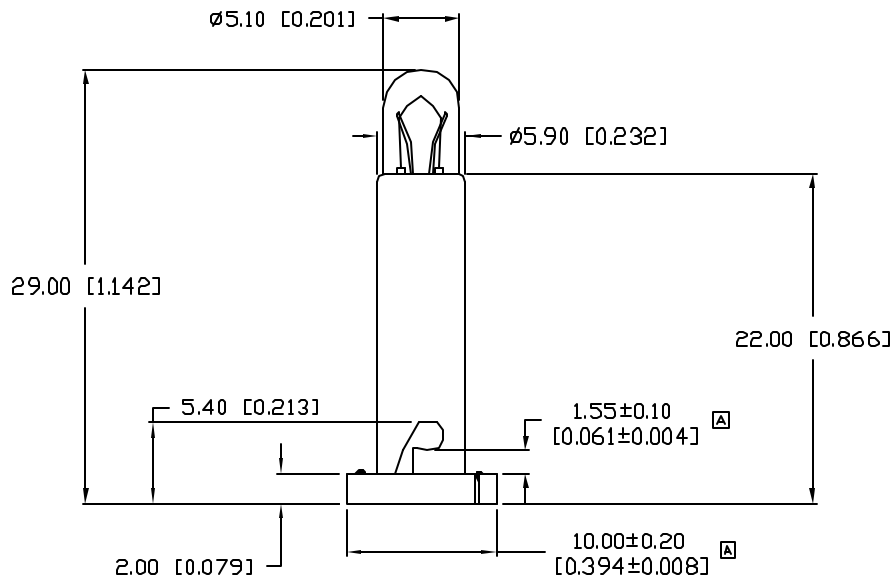
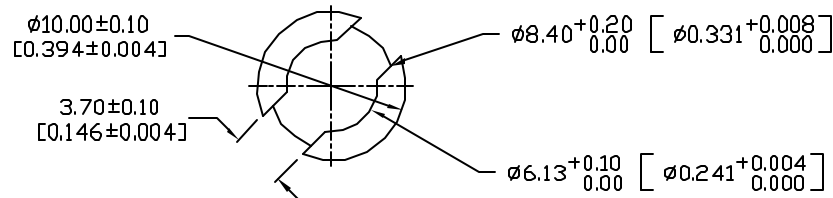


UNCONTROLLED DOCUMENT



RECOMMENDED PANEL CUT-OUT

RECOMMENDED PANEL THICKNESS 1.50^{+0.10}/_{0.00} [0.059^{+0.004}/_{0.000}]*UNLESS OTHERWISE SPECIFIED TOLERANCES PER DECIMAL PRECISION ARE: X=±1 (±0.039), X.X=±0.5 (±0.020), X.XX=±0.25 (±0.010), X.XXX=±0.127 (±0.005). LEAD SIZE=±0.05 (±0.002), LEAD LENGTH=±0.75 (±0.030), MIN= ^{+DECIMAL PRECISION}/_{-0.00} MAX= ^{+0.00}/_{-DECIMAL PRECISION}PART NUMBER
IFL-EB5138139-22REV.
C

REV.	E.C.N. NUMBER AND REVISION COMMENTS	DATE
A	E.C.N. #10545. CHANGED CASE.	8-10-99
B	E.C.N. #10628.	6-5-00
C	E.C.N. #11148.	12.22.06

ELECTRICAL SPECIFICATIONS

OPERATING VOLTAGE VAC. OR VDC.	12.0-14.0V
DESIGN VOLTAGE VAC. OR VDC.	14.0V
CURRENT DRAW @ DESIGN VOLTS	140mA
M.S.C.P. @ 13.8V (MINIMUM)	0.65 M.S.C.P.
M.S.C.P. @ 13.8V (MAXIMUM)	1.00 M.S.C.P.
AVERAGE LIFE @ DESIGN VOLTS (AC)	7,000 HOURS

MECHANICAL SPECIFICATIONS

BULB SIZE & SHAPE	T5mm TUBULAR
BULB GLASS TYPE	K 12 SOFT GLASS
BASE OR LEAD FINISH	GRAY NYLON 66, 15% GLASS
FILAMENT SHAPE	C-2F

ENVIRONMENTAL SPECIFICATIONS

VIBRATION TESTING	MIL-E-5400N, GRAPH IV
SHOCK TEST	MIL-STD-883 METHOD 2002 TEST CONDITION A
OPERATION TEMP.	- 50 TO +100 °C
STORAGE TEMP.	- 50 TO +125 °C
SOLDERABILITY OF LEADS	MIL-STD 202F, METHOD 208D



UNCONTROLLED DOCUMENT

REV.

C

PART NUMBER

IFL-EB5138139-22

CONFIDENTIAL INFORMATION

THE INFORMATION CONTAINED IN THIS DOCUMENT IS THE PROPERTY OF LUMEX INC. EXCEPT AS SPECIFICALLY AUTHORIZED IN WRITING BY LUMEX INC., THE HOLDER OF THIS DOCUMENT SHALL KEEP ALL INFORMATION CONTAINED HEREIN CONFIDENTIAL AND SHALL PROTECT SAME IN WHOLE OR IN PART FROM DISCLOSURE AND DISSEMINATION TO ALL THIRD PARTIES.

RELIABILITY NOTE

OUR MANY YEARS OF EXPERIENCE DATA ACCUMULATION INDICATE THAT SOLDER HEAT IS A MAJOR CAUSE OF EARLY AND FUTURE FAILURE. PLEASE PAY ATTENTION TO YOUR SOLDERING PROCESS.



290 E. HELEN ROAD
PALATINE, IL 60067-6976
PHONE: +1.847.359.2790
US WEB: www.lumex.com
TW WEB: www.lumex.com.tw

T-5mm (T-1 3/4) NEO-WEDGE LAMP, 0.65 M.S.C.P.,
14V, 140mA, WITH TWIST AND LOCK EXTENDED BASE.

DRAWN BY:

JC

CHECKED BY:

APPROVED BY:

DATE: 2.22.99

PAGE: 1 OF 1

SCALE: N/A

Mouser Electronics

Authorized Distributor

Click to View Pricing, Inventory, Delivery & Lifecycle Information:

Lumex:

[IFL-EB5138139-22](#)