

## WIRL IP66/IP67 SEALED IMPULSION LOCK SWITCH 2 & 3 POSITION

### ELECTRICAL & MECHANICAL SPECIFICATION

<b>Switch Rating:</b>	1A @24V ac/dv	<b>Life:</b>	>10,000 Cycles
<b>Proof Voltage:</b>	750 Vac (Initial)	<b>Lock Type:</b>	5 Disc
<b>Insulation Resistance:</b>	>999MΩ @ 500Vdc (Initial)	<b>Operating Temperature:</b>	-20°C to +65°C
<b>Contact Resistance:</b>	<20mΩ (Initial)	<b>Lock Housing:</b>	Zinc Alloy Bright Cr Plated
<b>Contact Material:</b>	Brass CZ108, Ag Plated	<b>Moulding Material:</b>	Polyamide 6.6 G.F. V0 Rated

### FEATURES

Suitable for Marine Environment Exposure to Severity One (EN60068-2-52) salt mist tested

Spring return

Double Pole DPST  
Rear panel depth - <30mm

Single Pole SPDT  
Rear panel depth - <35mm

Vandal Resistant versions available

Front assembly

Made in UK

Oil regularly if used outside

2 keys per switch, up to 200 differ key combinations available

Keys can be inserted either way up

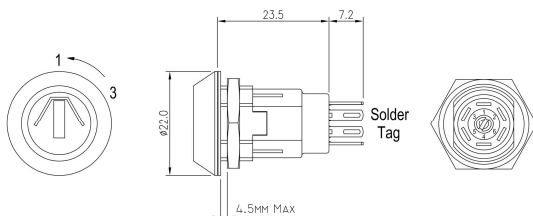
Master key versions to order



### DOUBLE POLE LOCK SWITCH

Tapered lock head 60° indexing Spring Return 2 Pole 2 Position

### TAPERED LOCK HEAD 60° INDEXING

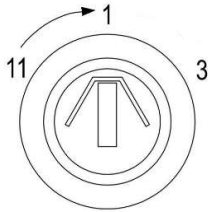


BASIC PART No.	TOTAL MOVEMENT	INDEXING	KEY WITHDRAWAL POSITIONS	SWITCH CONFIGURATION
WIRL-5-M	60°	60°	1 ONLY	

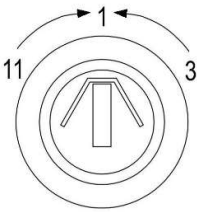
SINGLE POLE 3 POSITION

Available in three versions:-

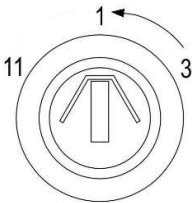
Type L - Left spring return with latching to the right.



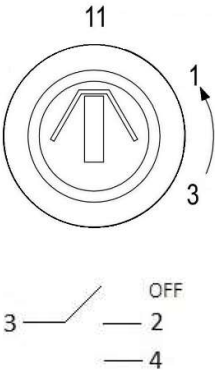
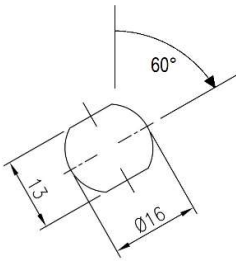
Type D - Double spring return.



Type R - Right spring return with latching to the left.



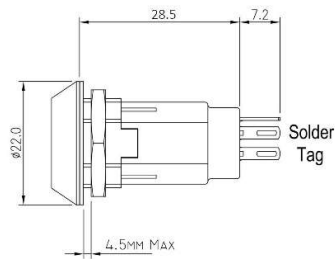
Type R Alternate mounting



SINGLE POLE LOCK SWITCH

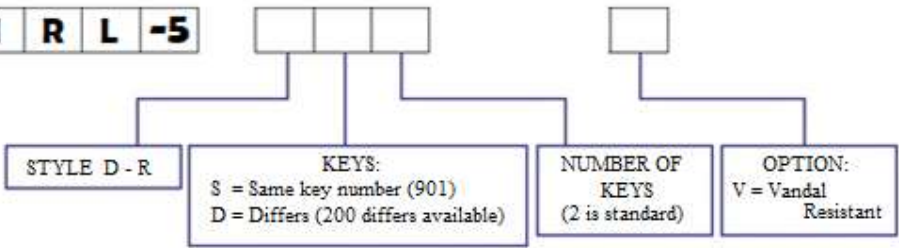
TAPERED LOCK HEAD 60° INDEXING

Tapered lock head 60° indexing Spring Return 1 Pole 3 Position



BASIC PART No.	TOTAL MOVEMENT / INDEXING	KEY WITHDRAWAL POSITIONS	SWITCH CONFIGURATION
WIRL-5-L	120° / 60°	1, 3	
WIRL-5-D	120° / 60°	1 ONLY	
WIRL-5-R	120° / 60°	11, 1	

WIRL-5



# Mouser Electronics

Authorized Distributor

Click to View Pricing, Inventory, Delivery & Lifecycle Information:

[Lorlin:](#)

[WIRL-5-M-S-2](#) [WIRL-5-D-D-2](#) [WIRL-5-R-S-2](#) [WIRL-5-L-S-2](#) [WIRL-5-D-S-2](#) [WIRL-5-L-D-2](#) [WIRL-5-M-D-2](#) [WIRL-5-R-D-2](#)