

# YF Series

## Typical Applications

- **Multi-pole and multi-position**

- **Positive detent**

- **Low level and power capability**

- **Computer servers**

- **Point-of-sale terminals**

- **Cash registers**



### Models Available

## Materials

LOCK: Zinc alloy with stainless steel facing. 4 tumbler, single bitted lock with integral detent mechanism.

KEYS: Two nickel plated brass keys with code number.

SWITCH HOUSING: 6/6 Nylon (UL 94V-2).

CONTACTS & TERMINALS: Q contact material: Copper, silver plated.  
See page L-14 for additional contact materials.

MOUNTING NUT: Brass, bright zinc plated.

TERMINAL SEAL: Epoxy.

**NOTE:** Any models supplied with Q or B contact material are RoHS compliant.

**NOTE:** Specifications and materials listed above are for switchlocks with standard options. For information on specific and custom switchlocks, consult Customer Service Center.

To order, simply select desired option from each category and place in the appropriate box. Available options are shown and described on pages L-12 through L-14. For additional options not shown in catalog, consult Customer Service Center.



## Switchlock

# YF Series

## 4 Tumbler Miniature Switchlocks

SWITCH AND LOCK FUNCTION

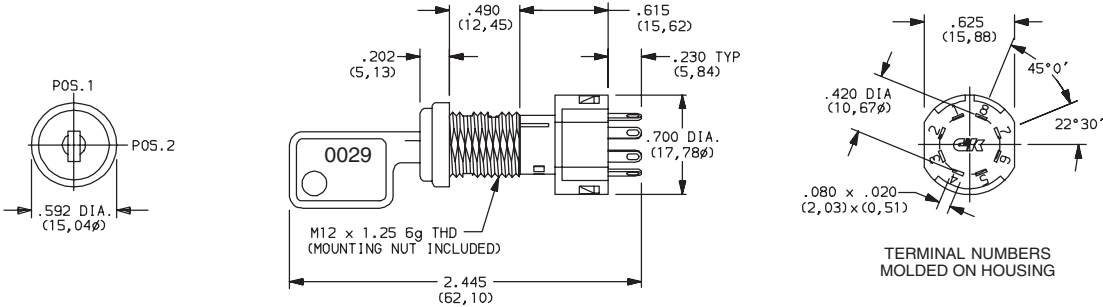
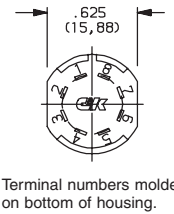
SINGLE & DOUBLE POLE SWITCHES							
NO. POLES	MODEL NO.	CONNECTED TERMINALS			KEY PULL POSITIONS	LOCK CONFIGURATION	INDEXING
		POS. 1	POS. 2	POS. 3			
SP DP	<b>YF0113</b> <b>YF2113</b>	8-1 8-1, 4-5	1-3 1-3, 5-7		Position 1		90°
SP DP	<b>YF011U</b> <b>YF211U</b>	8-1 8-1, 4-5	1-3 1-3, 5-7		Positions 1 & 2		

All models with all options when ordered with 'Q' contact material.

LEGEND

- = Detent Positions (45° or 90°)
- ⦿ = Key pull possible in these positions.
- = Stop Positions

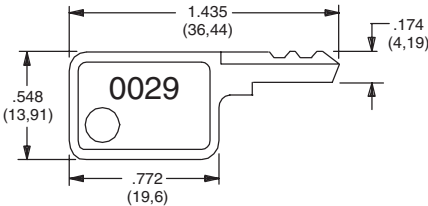
TERMINAL NUMBERS



Part number shown: YF01132C203NQ

KEYING

2 TWO NICKEL PLATED BRASS KEYS



Key Part Number: 960B10029

**NOTE:** All orders keyed alike with code number on key. For more than one key code, replacement keys, or other special features, consult Customer Service Center.

Third Angle Projection

Dimensions are shown: Inch (mm)

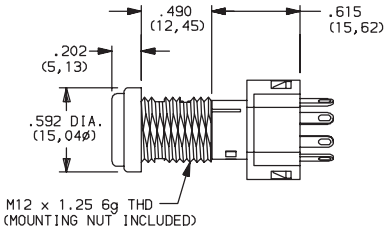
Specifications and dimensions subject to change



# YF Series 4 Tumbler Miniature Switchlocks

## LOCK TYPE

**C** 4 TUMBLER, SINGLE BITTED LOCK WITH DETENT



## LOCK FINISH

**2** STAINLESS STEEL FACING

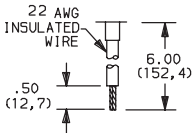
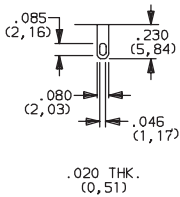
**8** GLOSS BLACK FACING



## TERMINATIONS

**03** SOLDER LUG WITH HOLE

**WC** WIRE LEAD



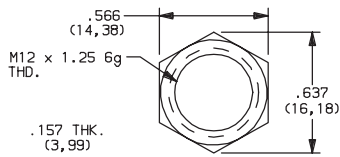
Black wire standard, other colors and lengths available, consult Customer Service Center. UL style 1015.



Switchlock

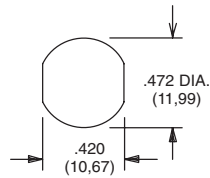
## YF Series 4 Tumbler Miniature Switchlocks

**N** WITH NUT



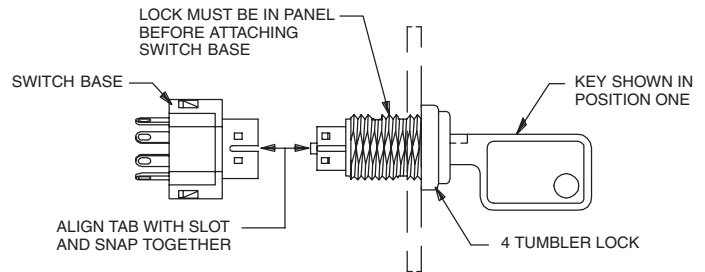
Nut part number: 1790901A47

## PANEL MOUNTING



Panel thickness:  
.300 (7,62) max.

## Switch and Lock Assembly Instructions



**NOTE:** Switch installation is permanent. Switch cannot be removed from lock after assembly. Attempts to separate switch and lock may damage switch.

OPTION CODE	RoHS COMPLIANT*	RoHS COMPATIBLE*	CONTACT AND TERMINAL MATERIAL	RATING	
<b>Q</b>	YES	YES	SILVER <sup>2</sup>	POWER	4 AMPS @ 125 V AC or 28 V DC; 2 AMPS @ 250 V AC (UL/CSA).
<b>B</b>	YES	YES	GOLD <sup>1</sup>	LOW LEVEL/DRY CIRCUIT	0.4 VA MAX. @ 20 V AC or DC MAX.

\* Note: See Technical Data section of this catalog for RoHS compliant and compatible definitions and specifications.

<sup>1</sup> CONTACTS & TERMINALS: Copper, with gold plate over nickel plate.

<sup>2</sup> CONTACTS & TERMINALS: Copper, silver plated (standard with all termination options).

All models **CALUS** with all options when ordered with 'Q' contact material.

## AVAILABLE HARDWARE



Key Code: 0029

**PART NO. (ONE KEY)**

960B10029

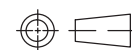
**Material:** Brass  
**Finish:** Nickel plate

Finish: Nickel plate



L

## Switchlock



### Third Angle Projection

Dimensions are shown: Inch (mm)

Specifications and dimensions subject to change

# Mouser Electronics

Authorized Distributor

Click to View Pricing, Inventory, Delivery & Lifecycle Information:

## C&K Switches:

[YF01132C203NQ](#) [YF01132C803NB](#) [YF011U2C203NQ](#) [YF21132C203NQ](#) [YF211U2C203NQ](#) [YF011U2C203NB](#)  
[YF211U2C2WCNQ](#) [YF01132C803NQ](#) [YF011U2C2WCNQ](#) [YF21132C803NQ](#) [YF211U2C803NQ](#) [YF011U2C2WCNB](#)  
[YF011U2C803NQ](#) [YF21132C2WCNQ](#) [YF01132C2WCNQ](#)