

V Series Power & Line Voltage Select Slide Switches

Features/Benefits

- Ratings up to 10 AMPS
- Snap-in panel and PC mounting
- Actuators with screwdriver slot
- Quick connect terminals available
- RoHS compliant

Typical Applications

- Appliances



Specifications

CONTACT RATING: 10 GPA @ 125 V AC 50/60 Hz T85;
5 GPA @ 250 V AC 50/60 Hz T85;
2 (0.5)A @ 250 VAC 50/60 Hz T85;
4RA @ 30 VDC T85

ELECTRICAL LIFE: 10,000 make-and-break cycles at full load.

CONTACT RESISTANCE: Below 10 m Ω typ. initial
@ 2-4 V DC, 100 mA.

INSULATION RESISTANCE: 10⁹ Ω min.

DIELECTRIC STRENGTH: 1,000 Vrms min. @ sea level.

OPERATING TEMPERATURE: -30°C to +85°C.

Materials

HOUSING: 6/6 nylon (UL94V-2), black.

TOP PLATE: 6/6 nylon (UL94V-2), black.

ACTUATOR: Glass filled polyester (UL94V-0), '01 and 02' styles, black (standard); '12, 13 and 14' styles, red (standard).

CONTACTS: Copper, silver plated.

TERMINALS: Copper, silver plated.

CONTACT SPRING: Music wire or stainless steel.

TERMINAL SEAL: Epoxy.

NOTE: Any models supplied with Q, B or G contact material are RoHS compliant.

NOTE: Specifications and materials listed above are for switches with standard options. For information on specific and custom switches, consult Customer Service Center.



Slide

Build-A-Switch

To order, simply select desired option from each category and place in the appropriate box. Available options are shown and described on pages I-34 through I-36. For additional options not shown in catalog, consult Customer Service Center.

<div style="border: 1px solid black; width: 100px; height: 15px; margin-bottom: 5px;"></div> <div style="border: 1px solid black; width: 100px; height: 15px; margin-bottom: 5px;"></div> <div style="border: 1px solid black; width: 100px; height: 15px; margin-bottom: 5px;"></div> <div style="border: 1px solid black; width: 100px; height: 15px; margin-bottom: 5px;"></div> <div style="border: 1px solid black; width: 100px; height: 15px; margin-bottom: 5px;"></div> <div style="border: 1px solid black; width: 100px; height: 15px; margin-bottom: 5px;"></div>		
Switch Function V802 DPDT V701 SPST V702 SPDT V801 DPST	Actuator 12 Screwdriver slot 01 .290" high 02 .290" high with markings 13 Screwdriver slot 14 Screwdriver slot with markings	Mounting Style SS Panel with mounting ears MA Right angle, PC thru-hole MS PC Thru-hole S2 Snap-in panel SL Right angle, panel with mounting ears
	Terminations 05 Quick connect 02 PC thru-hole 08 Right angle PC thru-hole	Contact Material Q Silver
		Seal NONE No seal E Epoxy seal

V Series

Power & Line Voltage Select Slide Switches

SWITCH FUNCTION

NO. POLES	MODEL NO.	SWITCH FUNCTION	SCHEMATIC	AVAILABLE MOUNTING STYLES
SP	V701	SPST		ALL
	V702	SPDT		ALL

All models



with all options.

Contacts make on side actuator thrown.

NO. POLES	MODEL NO.	SWITCH FUNCTION	SCHEMATIC	AVAILABLE MOUNTING STYLES
DP	V801	DPST		ALL
	V802	DPDT		ALL

ACTUATOR

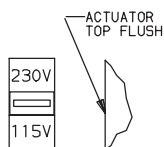
12 SCREWDRIVER SLOT WITH MARKING

01 .290" HIGH

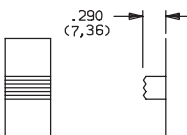
02 .290" HIGH WITH MARKINGS

13 SCREWDRIVER SLOT NO MARKING

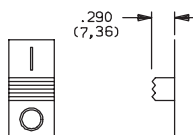
14 SCREWDRIVER SLOT WITH MARKINGS



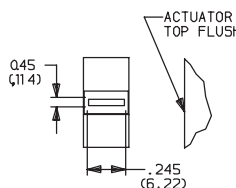
Actuator color is red with white 115V-230V markings (std.).



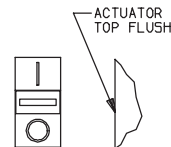
Actuator color is black.



markings are reversed on V702 and V802 models. Actuator color is black with white markings (std.).



Actuator color is red.



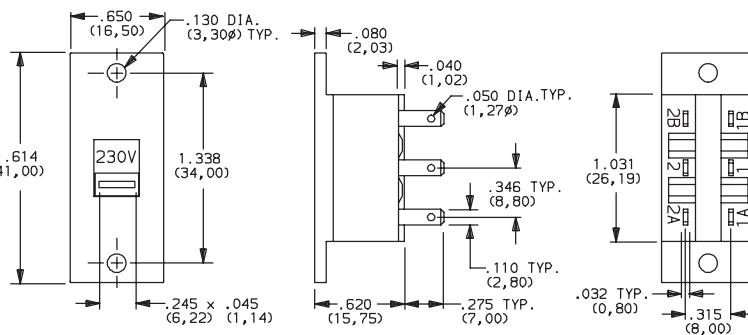
Markings are reversed on V702 and V802 models. Actuator color is red with white markings (std.). **Note:** Orientation of actuator markings and terminals.

MOUNTING STYLE

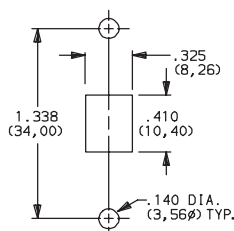
SS PANEL WITH MOUNTING EARS



V80212SS05Q
DPDT



PANEL MOUNTING



AVAILABLE WITH:

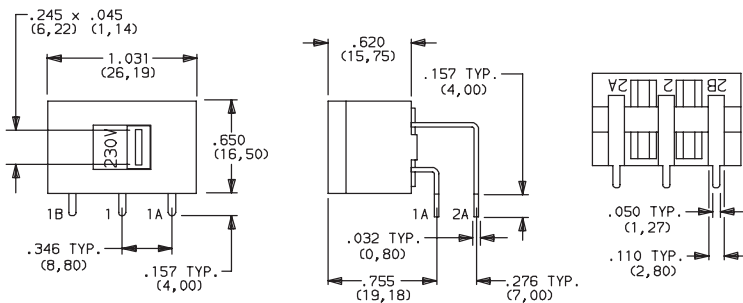
Models: All.

Terminations: 02 and 05

MA RIGHT ANGLE, PC THRU-HOLE



V80212MA08Q
Horizontal Actuation
DPDT



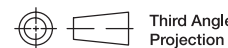
AVAILABLE WITH:

Models: All

Terminations: 08

PC MOUNTING

PC mount, side actuated. For mounting information, see TERMINATIONS section, page I-36.



Third Angle
Projection

Dimensions are shown: Inch (mm)

Specifications and dimensions subject to change

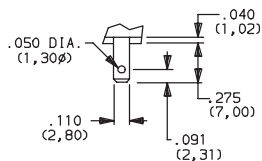
MOUNTING STYLE

V Series

Power & Line Voltage Select Slide Switches

TERMINATIONS

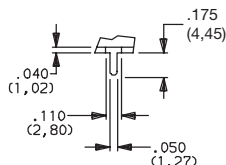
05 QUICK CONNECT



.032 THK.
(0,80)

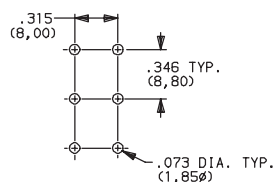
Fits .110 in. quick connector.

02 PC THRU-HOLE



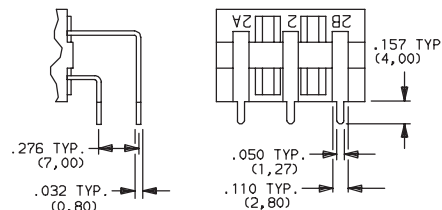
.032 THK.
(0,80)

PC MOUNTING



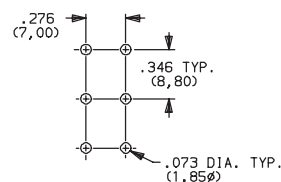
MS, SS Mounting Styles.

08 PC THRU-HOLE



Not available with 'MS, SS or S2' mounting styles.

PC MOUNTING



MA, SL Mounting Styles.

CONTACT MATERIAL

OPTION CODE	CONTACT MATERIAL	RATINGS	
Q	SILVER ¹	POWER	10 GPA @ 125 V AC 50/60 Hz T85; 5 GPA @ 250 V AC 50/60 Hz T85; 2 (0.5)A @ 250 VAC 50/60 Hz T85; 4RA @ 30 VDC T85

* Note: See Technical Data section of this catalog for RoHS compliant and compatible definitions and specifications.

¹ CONTACTS & TERMINALS: Copper, silver plated (standard with all termination options).

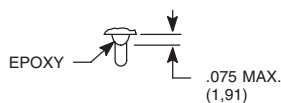
All models  15 with all options.

NOTE: Any models supplied with Q contact material are RoHS compliant.

SEAL

NONE NO SEAL

E EPOXY SEAL



Mouser Electronics

Authorized Distributor

Click to View Pricing, Inventory, Delivery & Lifecycle Information:

C&K Switches:

[V80201SS05Q](#) [V80212SS05Q](#) [V80201MA08Q](#) [V80213S205Q](#) [V80212MA08Q](#) [V70212MS02Q](#) [V80212MS02Q](#)
[V80213SS05Q](#) [V80214SS05Q](#) [V80114SS05Q](#) [V70102SS05Q](#) [V70113SS05Q](#) [V70114S205Q](#) [V70212SS05Q](#)
[V80212MS02QE](#) [V80212S205Q](#) [V80213MA08Q](#) [V80213MS02Q](#) [V80214MS02Q](#) [V80214S205Q](#) [V70213SS05Q](#)
[V70212SS05QE](#) [V70113S205Q](#) [V70201MS02Q](#) [V80214S205QE](#) [V80202SS05Q](#) [V70114MA08Q](#) [V70213MA08Q](#)
[V80102MS02QE](#) [V80102MS02Q](#) [V80202MS02QE](#) [V70214MA08Q](#) [V80212SL08Q](#) [V80213SL08Q](#) [V70212S205QE](#)
[V80112MA08Q](#) [V70114MS02Q](#) [V70213S205Q](#) [V80114S205QE](#) [V80102SS05Q](#) [V70212S205Q](#) [V80212S205QE](#)
[V70201MS02QE](#) [V80202MS02Q](#) [V80213MA08QE](#) [V70112S205QE](#) [V80214SS05QE](#) [V70214S205Q](#)
[V80212MA08QE](#) [V70213MS02Q](#) [V80201MS02Q](#) [V80214MS02QE](#) [V80212SS05QE](#) [V80202MA08Q](#) [V70212MA08Q](#)
[V80214MA08Q](#) [V70214S205QE](#) [V70113S205QE](#)