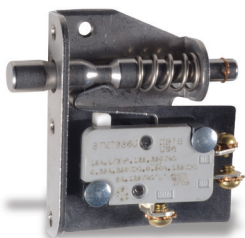


TL Series Door Interlock Switches



Features/Benefits

- Push/pull motion
- Multiple mounting configurations
- Wide variety of termination options
- Ratings up to 15 AMPS

Typical Applications

- Computer enclosures
- Panel builders
- Industrial enclosures

Specifications

CONTACT RATING: 15 AMPS @ 125 & 250 V AC; 0.25 AMP @ 250 V DC; 0.5 AMP @ 125 V DC; 1/2 HP @ 125 & 250 V AC; 3 AMPS @ 125 V AC "L".

ELECTRICAL LIFE: 150,000 cycles at 15 AMPS @ 250 V AC.

INSULATION RESISTANCE: 1,000 M ohm min.

DIELECTRIC STRENGTH: 1,000 Vrms min. @ sea level.

OPERATING TEMPERATURE: -67°F to 302°F (-55°C to 150°C).

NOTE: Specifications and materials listed above are for switches with standard options. For information on specific and custom switches, consult Customer Service Center.

Materials

SWITCH HOUSING: Thermoplastic or general purpose phenolic (UL 94V-0).

MOUNTING BRACKET: Stainless steel.

PLUNGER: Stainless steel.

ACTUATOR BUTTON: Thermoplastic (UL 94V-0).

SPRING: Copper alloy.

PIVOT: Brass alloy.

MOVABLE CONTACT: Fine silver.

STATIONARY CONTACTS: Fine silver.

TERMINALS: Copper alloy.

Build-A-Switch

To order, simply select desired option from each category and place in the appropriate box. Available options are shown and described on pages J-83 and J-84. For additional options not shown in catalog, consult Customer Service Center.

Model

- 11TL** One TM Series SPDT switch
- 12TL** One TM Series SPDT switch
- 23TL** Two TM Series SPDT switches

Terminations

- 60** Screw
- 40** .187" Quick connect
- 4A** .250" Quick connect

Plunger

- 2** Stainless steel, not tapped
- 4** Stainless steel, tapped



MODEL

The technical drawing illustrates the Model 6000-10000 pressure washer from two perspectives: a front view on the left and a side view on the right.

Front View Dimensions:

- Total height: 1.300 [33,02]
- Top width: .265 [6,73]
- Distance from top edge to trigger gun centerline: .25 [6,2]
- Distance from trigger gun centerline to motor unit centerline: .500 [12,7]
- Motor unit width: .406 [10,31]
- Bottom width: .51 [13]

Side View Dimensions:

- Total length: 1.87 [47,4]
- Distance from front face to trigger gun: .375 MAX. FREE POS. [9,53]
- Distance from trigger gun to motor unit: .203 MIN. OPER. POS. [5,16]
- Distance from motor unit to rear face: .125 MAX DEPRESSED POS. [3,18]
- Trigger gun diameter: Ø.25 [6,4]
- Trigger gun length: .179 [4,55]
- Motor unit length: .812 [20,62]
- Rear flange diameter: Ø.21 [5,3]
- Motor unit mounting bracket height: .218 [5,54]
- Motor unit base height: .84 [21,3]
- Motor unit base width: .26 [6,6]
- Total width: 1.59 [40,4]

Key Components and Labels:

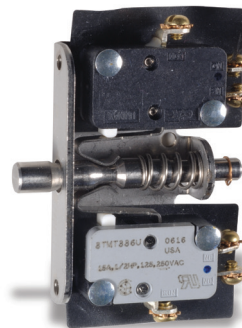
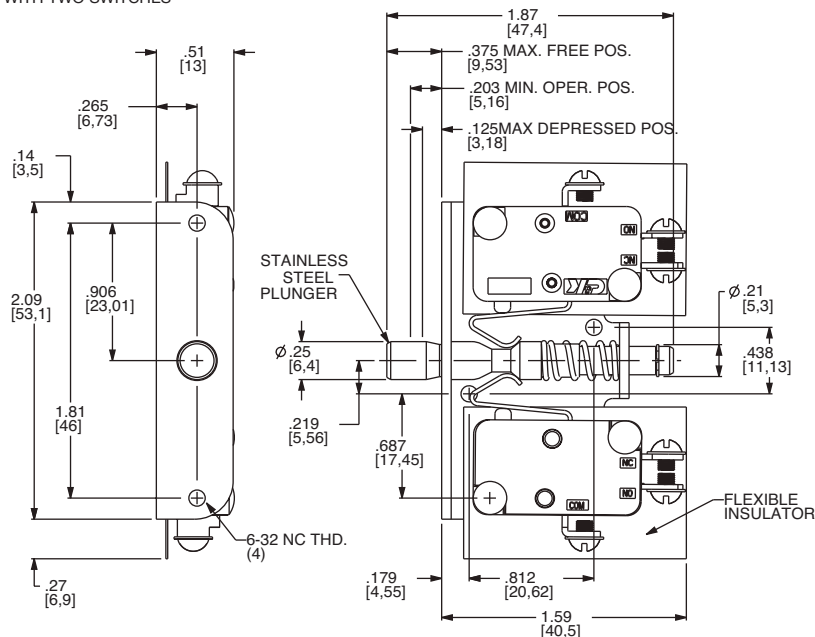
- STAINLESS STEEL PLUNGER
- 6-32 NC THD. (4)
- FLEXIBLE INSULATOR
- NC (Normally Closed) terminal
- NO (Normally Open) terminal
- COM (Common) terminal

www.ckswitches.com

TL Series Door Interlock Switches

MODEL

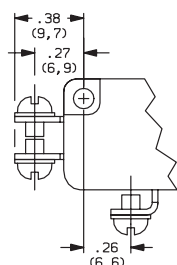
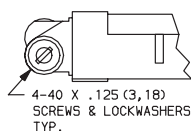
23TL WITH TWO SWITCHES



23TL602
SPDT

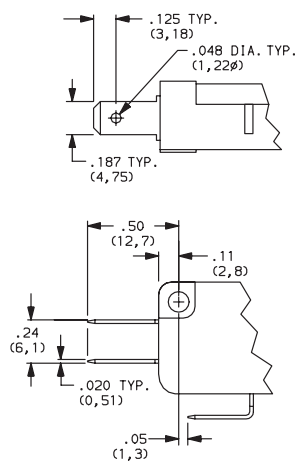
TERMINATIONS

60 SCREW TERMINALS

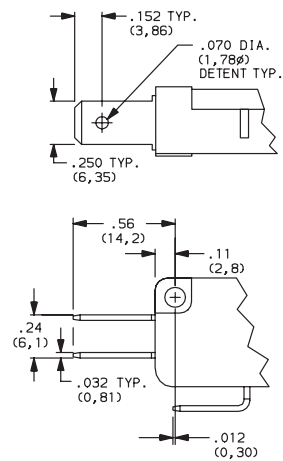


Torque screws to
6in lbs max

40 .187" QUICK CONNECT



4A .250" QUICK CONNECT



PLUNGERS

2 STAINLESS STEEL, NOT TAPPED

4 STAINLESS STEEL, TAPPED 4-40 x .375 (9,52) min. depth

Mouser Electronics

Authorized Distributor

Click to View Pricing, Inventory, Delivery & Lifecycle Information:

[C&K Switches:](#)

[23TL402](#) [23TL4A2](#)