

## Features/Benefits

- Various designs up to 16 amps
- Heavy duty and extended life cycles
- SPST, SPDT and DPST options
- Different symbols available

## Typical Applications

- Household appliances
- Industrial equipment
- Audio & visual equipment
- Telecommunication
- Office equipment



## Specifications

CONTACT RATING: 6.5 Amps @ 125 VAC  
 ELECTRICAL LIFE: 6,000 cycles at full load.  
 INITIAL CONTACT RESISTANCE: 100m  $\Omega$  min.  
 INSULATION RESISTANCE: 100M  $\Omega$  min.  
 DIELECTRIC STRENGTH: 1,500 VAC (50-60 Hz)  
 OPERATING FORCE: ON\_OFF: 250  $\pm$  100 gf  
                                     OFF\_ON: 700  $\pm$  250 gf  
 PACKAGING:       300 pieces per bag (5 trays)  
                           2,400 pieces per box

## Materials

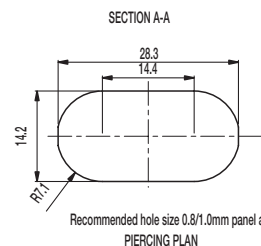
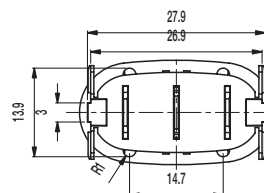
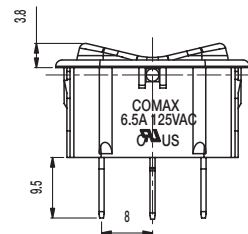
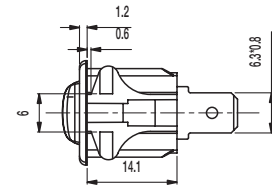
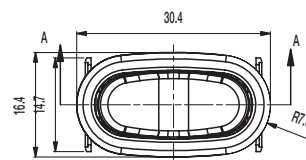
HOUSING: PA (UL 94V-2).  
 KNOB: PA (UL 94V-2).  
 CONTACTS: Silver plated.

**NOTE:** Specifications and materials listed above are for switches with standard options.  
 For information on specific and custom switches, consult Customer Service Center.

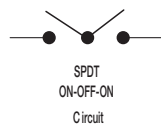
## Environmental

OPERATING TEMPERATURE: 0°C to 65°C

PART NUMBER	HOUSING COLOR
SW-13A65N-A01	White
SW-13A65N-A01 BK	Black
SW-11A06N-A02	Black
SW-11A06N-A03 AP	Black
SW-11A06N-B02	Black
SW-11A06N-B02 AP	Black
SW-11A06N-CR02	Black
SW-12A06N-B02	Black
SW-12A06N-F01	Black
SW-12B03N	Black
SW-13A65N-A01 AK	Almond
SW-13A65N-A01 BI	Biscuit



Recommended hole size 0.8/1.0mm panel assembly.  
 PIERCING PLAN



# Mouser Electronics

Authorized Distributor

Click to View Pricing, Inventory, Delivery & Lifecycle Information:

[C&K Switches:](#)

[SW13A65NA01BK](#)