

PS-12G Series Pushbutton Switches



A

Pushbutton

Features/Benefits

- Latching pushbutton
- Non-shorting with lock
- 5 mm travel
- SPDT

Typical Applications

- Automotive interior lighting
- Computer peripherals
- Appliances



How To Order

Part number list is shown below. For individual part details, please refer to the following pages.

Part Number (Part Description)	Product Details
PS-12G01	SPDT, non-shorting with lock, 1A @ 14 VDC, white actuator
PS-12G03	SPDT, non-shorting with lock, 2.2A @ 14.5 VDC, black actuator



PART NUMBER	PACKAGING	SCHEMATIC
PS-12G01	200 pieces	

Dimensions

WIDTH X DEPTH: 14 x 16.8 mm

HEIGHT: 18 mm

Specifications

CONTACT RATING: 1A @ 14 VDC

INITIAL CONTACT RESISTANCE: 100 m ohms max.

INSULATION RESISTANCE: 100 M ohms min.

DIELECTRIC STRENGTH: 500 V AC (50-60 Hz) between open terminals and between the frame and terminal.

OPERATING LIFE: 20,000 cycles with load

OPERATING FORCE: 400 ± 100 gf

OPERATING POSITION: 3.6 ± 0.2 mm

TOTAL TRAVEL: 5 ± 0.3 mm

OPERATING TEMPERATURE: -20°C to 70°C

Materials

KNOB: POM (UL 94HB)

HOUSING: PBT (UL 94V-0)

COVER: PBT (UL 94V-0)

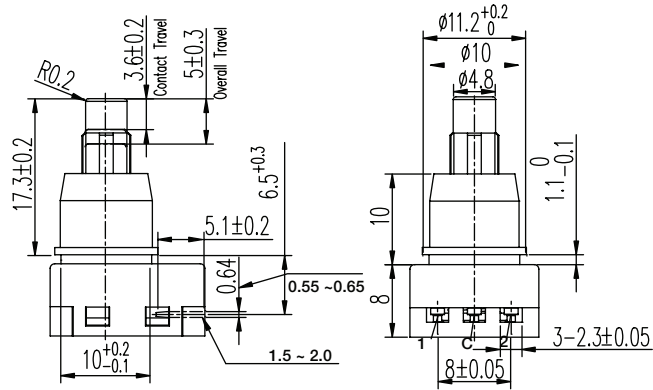
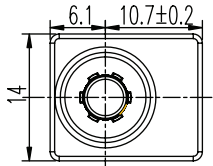
ROTOR: PBT (UL 94V-0)

SLIDER: POM (UL 94HB)

TERMINAL: Phosphor bronze, silver plated

SPRING: Stainless steel

CONTACT: Phosphor bronze, silver plated





PS-12G Series Pushbutton Switches

A

Pushbutton



PART NUMBER	PACKAGING	SCHEMATIC
PS-12G03	200 pieces	

Dimensions

WIDTH X DEPTH: 14 x 16.8 mm

HEIGHT: 18.3 mm

Specifications

CONTACT RATING: 2.2A @ 14.5 VDC

INITIAL CONTACT RESISTANCE: 50 m ohms max.

INSULATION RESISTANCE: 100 M ohms min.

DIELECTRIC STRENGTH: 500 V AC (50-60 Hz) between open terminals and between the frame and terminal.

OPERATING LIFE: 20,000 cycles with load

OPERATING FORCE: 650 ± 300 gf

OPERATING POSITION: 4.00 ± 0.2 mm

TOTAL TRAVEL: 4.5 ± 0.3 mm

OPERATING TEMPERATURE: -40°C to 85°C

Materials

KNOB: POM (UL 94HB)

HOUSING: PBT & PA (UL 94V-0)

COVER: PBT (UL 94V-0)

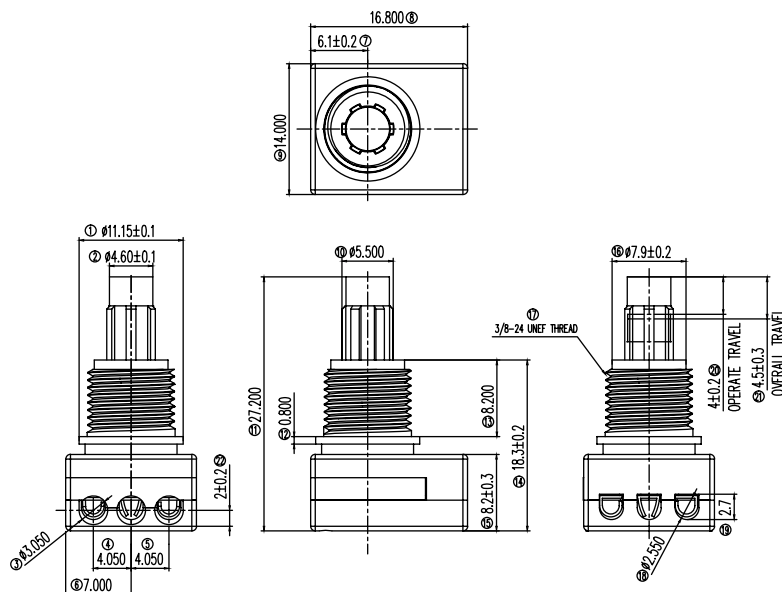
ROTOR: PBT (UL 94V-0)

SLIDER: POM (UL 94HB)

TERMINAL: Brass, silver plated

SPRING: Stainless steel

CONTACT: Phosphor bronze, silver plated



TYCO .062 Commercial Pin
and Socket Connector
PT# 770983-1

PS-22 Series Subminiature Pushbutton Switches



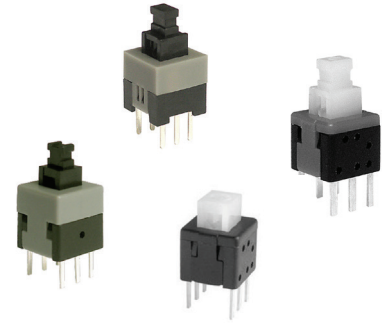
A
Pushbutton

Features/Benefits

- Compact miniature push switch
- Momentary or latching options
- Shorting or non-shorting
- DPDT

Typical Applications

- Industrial
- Automotive
- Audio and visual equipment



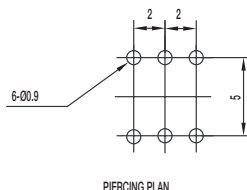
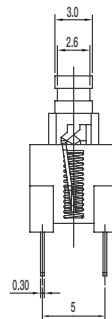
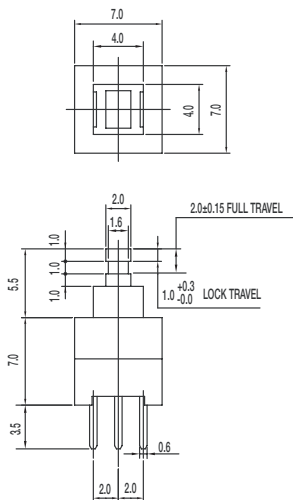
How To Order

Part number list is shown below. For individual part details, please refer to the following pages.

Part Number (Part Description)	Product Details	Part Number (Part Description)	Product Details
PS-2203-L NS PA	DPDT, non-shorting, lock, dim: 7.0*7.0*12.5 mm	PS-2214-L NS PA	DPDT, non-shorting, lock, dim: 5.8*5.8*7.5 mm
PS-2203-F NS PA	DPDT, non-shorting, mom, dim: 7.0*7.0*12.5 mm	PS-2214-F NS PA	DPDT, non-shorting, mom, dim: 5.8*5.8*7.5 mm
PS-2206-F NS	DPDT, non-shorting, mom, dim: 8.0*8.0*12.5 mm	PS-221605-L NS	DPDT, non-shorting, lock, dim: 5.8*5.8*10.0 mm



PART NUMBER	PACKAGING	SCHEMATIC
PS-2203-L NS PA	1,000 pieces	
PS-2203-F NS PA	1,000 pieces	



Dimensions

WIDTH X DEPTH: 7.0 x 7.0 mm

HEIGHT: 12.5 mm

Specifications

CONTACT RATING: 0.1A @ 30 VDC

INITIAL CONTACT RESISTANCE: 30 m ohms max.

INSULATION RESISTANCE: 100 M ohms min.

DIELECTRIC STRENGTH: 500 V AC (50-60 Hz) between open terminals and between the frame and terminal.

OPERATING LIFE: 10,000 cycles with load

OPERATING FORCE:
200 ± 100 gf (1.96 ± 0.98N)

LOCK TRAVEL: 1 mm

TOTAL TRAVEL: 2 mm

OPERATING TEMPERATURE: -20°C to 70°C

Materials

KNOB: POM Black

HOUSING: PA Black

COVER: POM Grey (latch) / White (Mom)

TERMINAL: Brass, silver plated

CONTACT CLIP: Phosphor bronze., silver plated

SPRING: Stainless steel

HOOK LOCK: Stainless steel (latch)



PS-22 Series Subminiature Pushbutton Switches

A

Pushbutton



PART NUMBER	PACKAGING	SCHEMATIC
PS-2206-F NS	1,000 pieces	

Dimensions

WIDTH X DEPTH: 8.0 x 8.0 mm

HEIGHT: 13.5 mm

Specifications

CONTACT RATING: 0.1A @ 30 VDC

INITIAL CONTACT RESISTANCE: 70 m ohms max.

INSULATION RESISTANCE: 100 M ohms min.

DIELECTRIC STRENGTH: 500 V AC (50-60 Hz) between open terminals and between the frame and terminal.

OPERATING LIFE: 10,000 cycles with load

OPERATING FORCE:

200 ± 100 gf (1.96 ± 0.98N)

LOCK TRAVEL: 1.5 mm

TOTAL TRAVEL: 2.5 mm

OPERATING TEMPERATURE: -20°C to 70°C

Materials

KNOB: POM Black

HOUSING: PBT Black

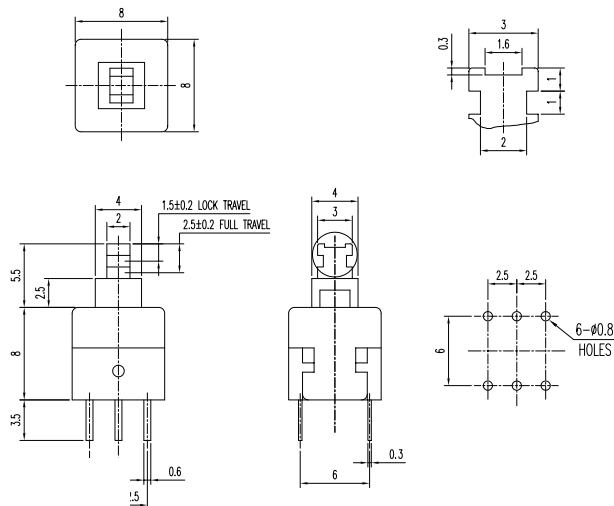
COVER: POM Grey (latch) / White (Mom)

TERMINAL: Brass, silver plated

CONTACT CLIP: Phosphor bronze., silver plated

SPRING: Stainless steel

HOOK LOCK: Stainless steel (latch)



PART NUMBER	PACKAGING	SCHEMATIC
PS-2214-L NS PA	1,000 pieces	
PS-2214-F NS PA	1,000 pieces	

Dimensions

WIDTH X DEPTH: 5.8 x 5.8 mm

HEIGHT: 7.5 mm

Specifications

CONTACT RATING: 0.1A @ 30 VDC

INITIAL CONTACT RESISTANCE: 80 m ohms max.

INSULATION RESISTANCE: 100 M ohms min.

DIELECTRIC STRENGTH: 500 V AC (50-60 Hz) between open terminals and between the frame and terminal.

OPERATING LIFE: 10,000 cycles with load

OPERATING FORCE:

150 ± 50 gf (1.47 ± 0.49N)

LOCK TRAVEL: 1.45 mm

TOTAL TRAVEL: 2.3 mm

OPERATING TEMPERATURE: -20°C to 70°C

Materials

KNOB: POM Natural (latch) / PA black

HOUSING: PA Black

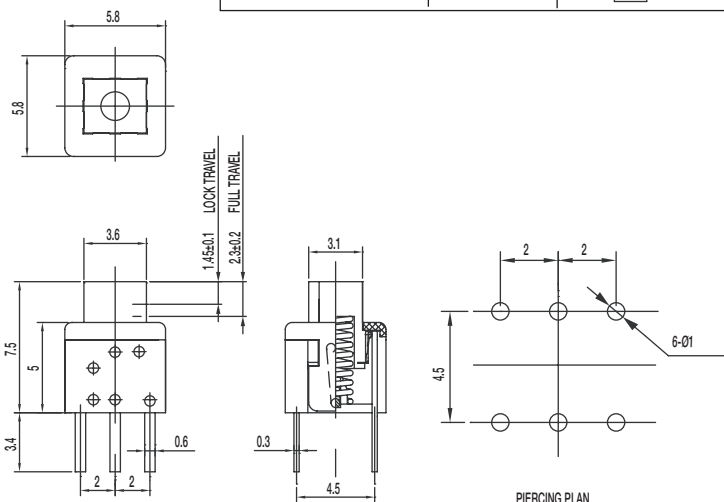
COVER: PA Black

TERMINAL: Brass, silver plated

CONTACT CLIP: Phosphor bronze, silver clad

SPRING: Stainless steel

HOOK LOCK: Stainless steel (latch)



PS-22 Series Subminiature Pushbutton Switches



A
Pushbutton



PART NUMBER	PACKAGING	SCHEMATIC
PS-221605-L NS	1,000 pieces	

Dimensions

WIDTH X DEPTH: 5.8 x 5.8 mm

HEIGHT: 10 mm

Specifications

CONTACT RATING: 0.1A @ 30 VDC / 2A @ 2 VDC

INITIAL CONTACT RESISTANCE: 80 m ohms max.

INSULATION RESISTANCE: 100 M ohms min.

DIELECTRIC STRENGTH: 500 V AC (50-60 Hz) between open terminals and between the frame and terminal.

OPERATING LIFE: 10,000 cycles with load

OPERATING FORCE:
150 ± 50 gf (1.47 ± 0.49N)

LOCK TRAVEL: 1.3 mm

TOTAL TRAVEL: 2.1 mm

OPERATING TEMPERATURE: -20°C to 70°C

Materials

KNOB: POM Natural

HOUSING: PA Black

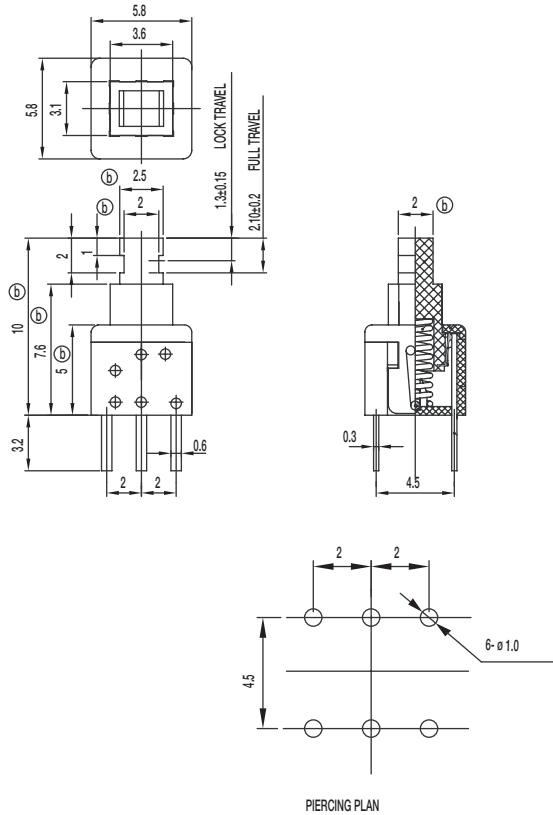
COVER: PC Grey

TERMINAL: Bras, silver plated

CONTACT CLIP: Phosphor bronze, silver clad

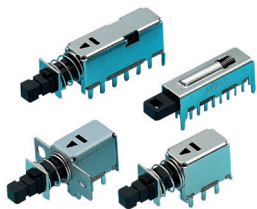
SPRING: Stainless steel

HOOK LOCK: Stainless steel (latch)





PS Series Miniature Pushbutton Switches



Features/Benefits

- Miniature size
- Momentary or latching options
- Broad range of products

Typical Applications

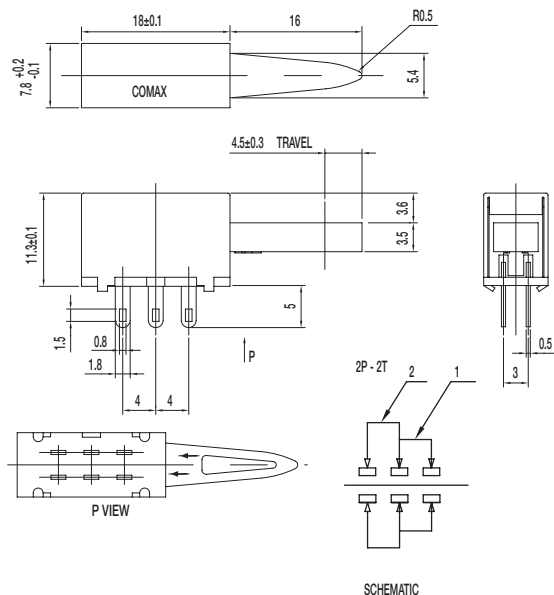
- Industrial
- Automotive
- Audio and visual equipment
- Telecommunications

How To Order

Part number list is shown below. For individual part details, please refer to the following.

Part Number (Part Description)	Product Details
PS-22I05	DPDT, non-shorting, RT angle with metal frame

PS-22I05 DPDT NON-SHORTING



Specifications

CONTACT RATING: 0.3A @ 30 VDC

INITIAL CONTACT RESISTANCE: 30 m ohms max.

INSULATION RESISTANCE: 100 M ohms min.

DIELECTRIC STRENGTH: 500 V AC (50-60 Hz) between open terminals and between the frame and terminal.

OPERATING LIFE: 10,000 cycles with load

OPERATING FORCE: 400 ± 150 gf (3.92 ± 1.47N)

TOTAL TRAVEL: 4.5 ± 0.3 mm

OPERATING TEMPERATURE: -20°C to 70°C

Materials

FRAME: SECC

KNOB: POM (UL 94HB)

CONTACT PLATE: Silver clad

SPRING: SUS

TERMINAL: Silver plated

PS Series Miniature Pushbutton Switches



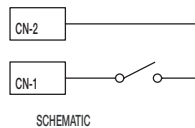
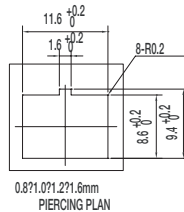
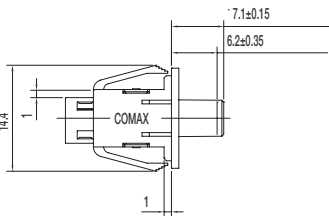
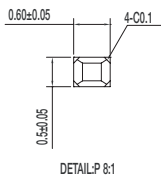
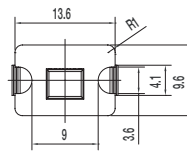
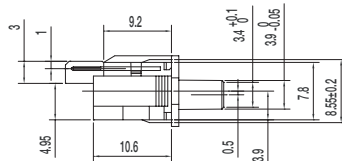
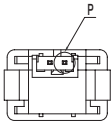
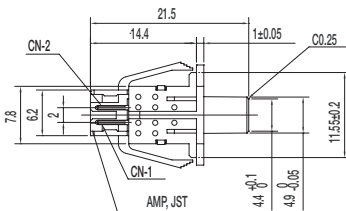
A
Pushbutton

How To Order

Part number list is shown below. For individual part details, please refer to the following pages.

Part Number (Part Description)	Product Details
PS-12C02-F NS	SPST non-shorting, mom
PS-32C02-F NS	1P3T non-shorting, mom, pitch: 7.2 mm
PS-42C02-F NS	1P4T non-shorting, mom, pitch: 7.2 mm

PS-12C02-F NS SPST NON-SHORTING



Specifications

CONTACT RATING: 100 μ A @ 3 VDC min. / 10mA @ 5 VDC max

INITIAL CONTACT RESISTANCE: 100 m ohms max.

INSULATION RESISTANCE: 100 M ohms min.

DIELECTRIC STRENGTH: 250 V AC (50-60 Hz) between open terminals and between the frame and terminal.

OPERATING LIFE: 100,000 cycles with load

OPERATING FORCE: 50 \pm 15 gf (0.49 \pm 0.147N)

PRE-TRAVEL: 6.20 \pm 0.35 mm

OPERATING TEMPERATURE: -40°C to 85°C

Materials

KNOB: POM (UL 94HB)

COVER: PA (UL 94V-0)

HOUSING: PA (UL 94V-0)

SPRING: SUS

TERMINAL: Silver plated

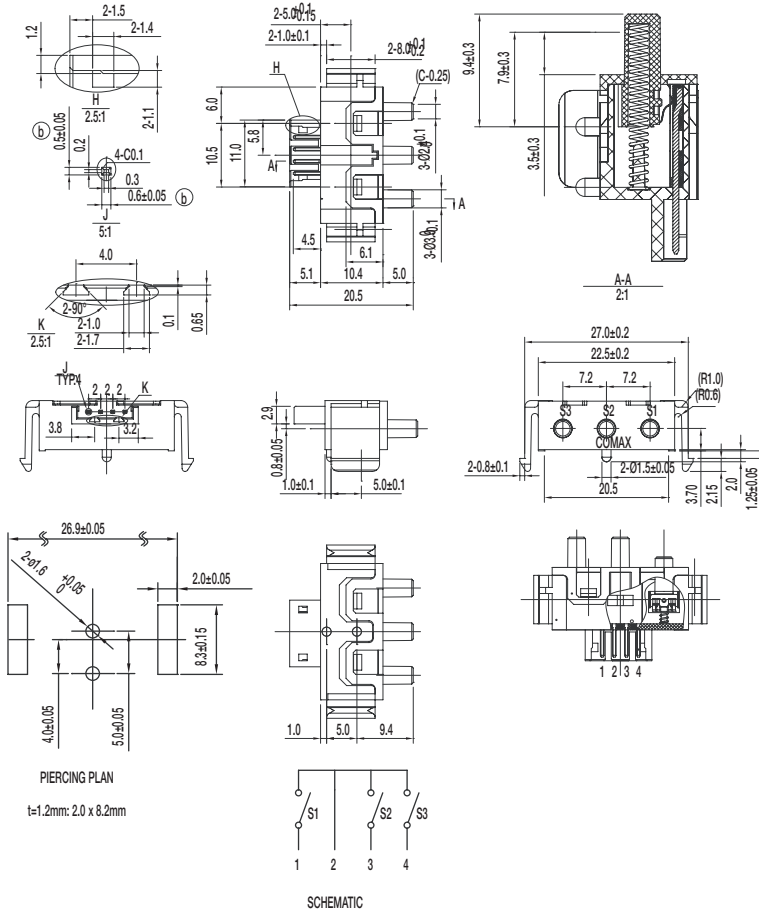


PS Series Miniature Pushbutton Switches

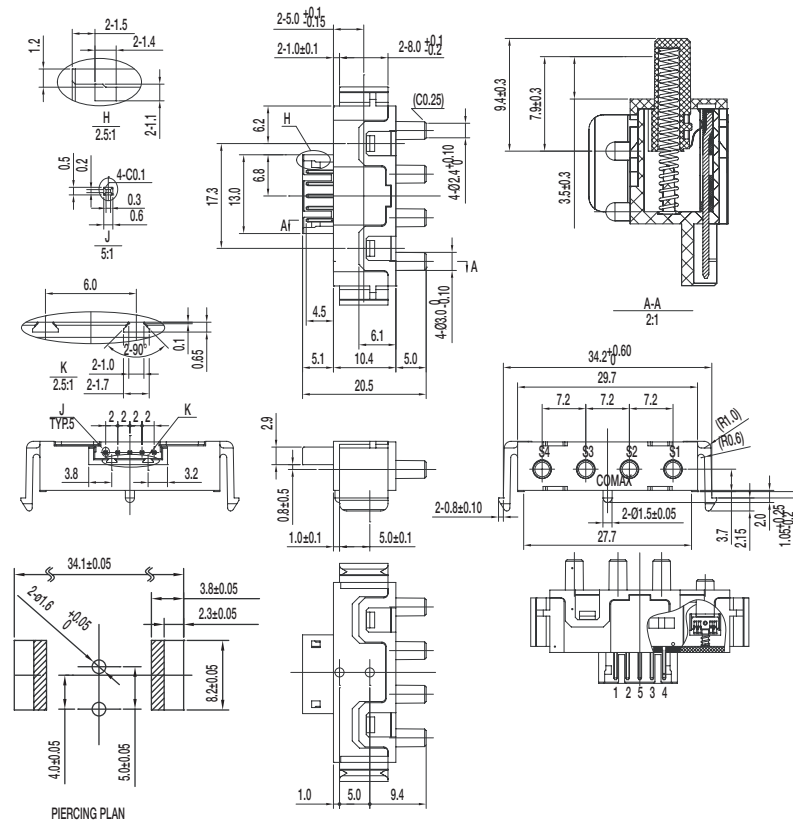
Pushbutton

A

PS-32C02-F NS 1P3T NON-SHORTING



PS-42C02-F NS 1P4T NON-SHORTING



Specifications

CONTACT RATING: 100 μ A @ 3 VDC min. /
10mA @ 5 VDC max

INITIAL CONTACT RESISTANCE: 100 m ohms max.

INSULATION RESISTANCE: 100 M ohms min.

DIELECTRIC STRENGTH: 250 V AC (50-60 Hz)
between open terminals and between the
frame and terminal.

OPERATING LIFE: 100,000 cycles with load

OPERATING FORCE: 80 ± 20 gf (0.784 \pm 0.196N)

PRE-TRAVEL: 1.5 ± 0.3 mm

OVER-TRAVEL: 3.5 ± 0.3 mm

TOTAL TRAVEL: 5 ± 0.3 mm

OPERATING TEMPERATURE: -20°C to 65°C

Materials

KNOB: POM (UL 94HB)

COVER: PA (UL 94V-0)

HOUSING: PA (UL 94V-0)

SPRING: SUS

TERMINAL: Silver plated

Specifications

CONTACT RATING: 100 μ A @ 3 VDC min. /
10mA @ 5 VDC max

INITIAL CONTACT RESISTANCE: 100 m ohms max.

INSULATION RESISTANCE: 100 M ohms min.

DIELECTRIC STRENGTH: 250 V AC (50-60 Hz) between
open terminals and between the frame and terminal.

OPERATING LIFE: 100,000 cycles with load

OPERATING FORCE: 80 ± 20 gf (0.784 \pm 0.196N)

PRE-TRAVEL: 1.5 ± 0.3 mm

OVER-TRAVEL: 3.5 ± 0.3 mm

TOTAL TRAVEL: 5 ± 0.3 mm

OPERATING TEMPERATURE: -20°C to 65°C

Materials

KNOB: POM (UL 94HB)

COVER: PA (UL 94V-0)

HOUSING: PA (UL 94V-0)

SPRING: SUS

TERMINAL: Silver plated

Dimensions are shown: mm
Specifications and dimensions subject to change

Mouser Electronics

Authorized Distributor

Click to View Pricing, Inventory, Delivery & Lifecycle Information:

C&K Switches:

[PS12G03](#) [PS-2203-F NS PA](#) [PS42C02FNS](#) [PS2214LNS](#) [PS62D17K](#) [PS22F43A3.3NSRPA](#) [PS221605LNS](#)
[PS22F04G13NSJ](#) [PS22F42R5NS](#) [PS92D05NS](#) [PS12F92F5NS](#) [PS22F43A3.3NSA](#) [PS22F13A3.3NSLV1](#)
[PS82D03NS](#) [PS22E04G13S](#) [PS22F37G13NS](#) [PS22E85G13NS](#) [PS42D13K](#) [PS2203LNSLT](#) [PS12E02G13NS](#)
[PS22E08G10NSA](#) [PS42D16NS](#) [PS12F92H5NSNK](#) [PS62D10S](#) [PS2206FNS](#) [PS22E02G13S](#) [PS22F43A3.3NS](#)
[PS2203LNSPA](#) [PS12F91F3.3NSL](#) [PS12F92AF3.3NSZBX5](#) [PS22E75G13NS](#) [PS12E02G13NSJ](#) [PS12F92R5SBK](#)
[PS2203FNS](#) [PS12F92F5NSB](#) [PS22F04G13NSH](#) [PS102D13NS](#) [PS2204LNS](#) [PS22C08G10NS](#) [PS22F43B7.3NSRP](#)
[PS12F91R4NSB](#) [PS22F21A3.3NSJ](#) [PS22F31A3.3NS](#) [PS22F04G13NSA](#) [PS12F51AF5NS](#) [PS42E04G13S](#)
[PS12F92F7.3NSQ](#) [PS92D05S](#) [PS12F96R4.5NS](#) [PS22F13A3.3NSA](#) [PS22E04G13NSU](#) [PS22E08G10NSH](#)
[PS22F23A3.3NSFR](#) [PS221605FNS](#) [PS12D08R4NS](#) [PS12F92F6NSNKB](#) [PS12F92RF3.4SBKB](#) [PS62D15K1](#)
[PS12F92R4.5SBK](#) [PS22I05](#) [PS62D15NS](#) [PS22E07G10S](#) [PS22E85PG9.5NS](#) [PS62D13NS](#) [PS22F04G13NSFRH](#)
[PS22F97R3.3NS](#) [PS12F96R4.5NSB](#) [PS62D13K1](#) [PS2203LNSU](#) [PS12F92F5.5NSRK](#) [PS12F72A3.3NSB](#)
[PS22E02G13NS](#) [PS22F04G13NS](#) [PS2214FNSPA](#) [PS22F96G13NSRPH](#) [PS2203LNS](#) [PS12F91AF3.3NS](#)
[PS12F92R4.5SBKB](#) [PS22F22A3.3NS](#) [PS62D01NS](#) [PS22E04G13NS](#) [PS2214FNS](#) [PS22F31B7.3NS](#) [PS2203LS](#)
[PS221905LNS](#) [PS42D13NS](#) [PS2202FNSU](#) [PS2214LNSPA](#) [PS2203FNSPA](#) [PS2211LNSPA](#)