

PB Series Single Pole and Multi-Key Pushbutton Switches



A

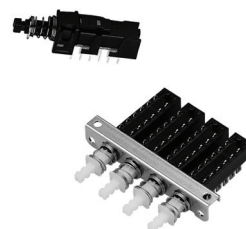
Pushbutton

Features/Benefits

- Momentary or latching options
- Reliable contact design
- 2, 4, and 6 pole configurations
- Long travel and extended life cycles

Typical Applications

- Appliances
- Audio and visual equipment
- Consumer electronics
- Industrial equipment



Specifications

CONTACT RATING: 0.3A @ 30 VDC

INITIAL CONTACT RESISTANCE: 30 m ohms max.

INSULATION RESISTANCE: 100 M ohms min.

DIELECTRIC STRENGTH: 500 V AC (50-60 Hz) between open terminals and between the frame and terminal.

OPERATING LIFE: 10,000 cycles without load

OPERATING FORCE:

250 ± 100 gf (2.45 ± 0.98N)

LOCK TRAVEL: 2 ± 0.3 mm

TOTAL TRAVEL: 3 ± 0.3 mm

OPERATING TEMPERATURE: -20°C to 70°C

Materials

CASE: PC (UL 94HB)

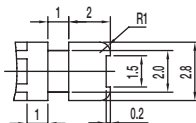
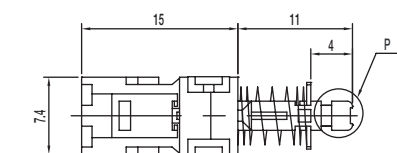
PLASTIC CLIP: POM (UL 94HB)

SPRING: SUS

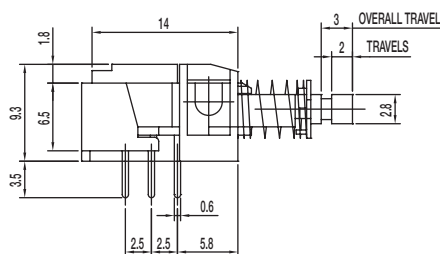
KNOB: POM

TERMINAL: Silver plated

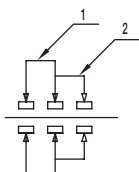
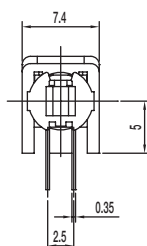
PB-22D01-L 2PDT LOCK / LATCHING



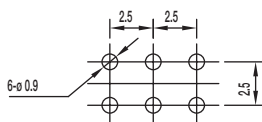
P DETAIL 2:1



2P — 2T



SCHEMATIC

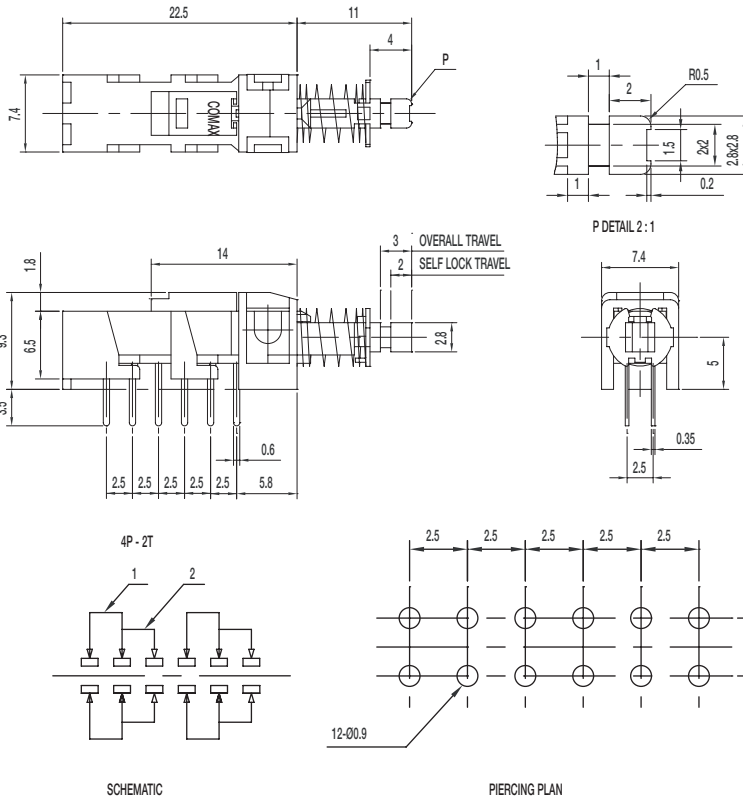


PIERCING PLAN



PB Series Single Pole and Multi-Key Pushbutton Switches

PB-42D01-L 4PDT LOCK / LATCHING



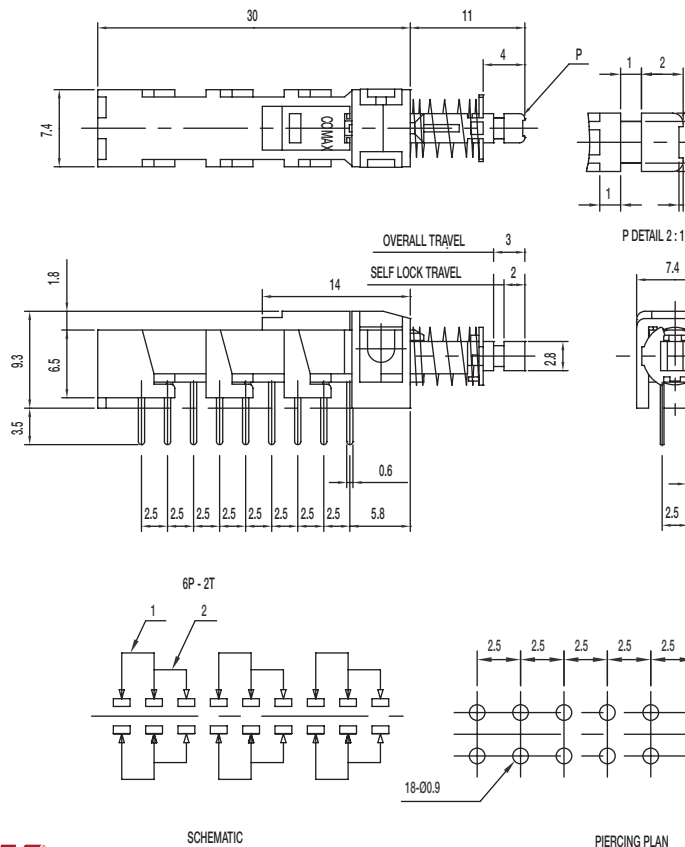
Specifications

CONTACT RATING: 0.3A @ 30 VDC
 INITIAL CONTACT RESISTANCE: 30 m ohms max.
 INSULATION RESISTANCE: 100 M ohms min.
 DIELECTRIC STRENGTH: 500 V AC (50-60 Hz) between open terminals and between the frame and terminal.
 OPERATING LIFE: 10,000 cycles without load
 OPERATING FORCE:
 280 ± 100 gf
 LOCK TRAVEL: 2 ± 0.3 mm
 TOTAL TRAVEL: 3 ± 0.3 mm
 OPERATING TEMPERATURE: -20°C to 70°C

Materials

CASE: PC (UL 94HB)
 PLASTIC CLIP: POM (UL 94HB)
 SPRING: SUS
 KNOB: POM
 TERMINAL: Silver plated

PB-62D01-L 6PDT LOCK / LATCHING



Specifications

CONTACT RATING: 0.3A @ 30 VDC
 INITIAL CONTACT RESISTANCE: 30 m ohms max.
 INSULATION RESISTANCE: 100 M ohms min.
 DIELECTRIC STRENGTH: 500 V AC (50-60 Hz) between open terminals and between the frame and terminal.
 OPERATING LIFE: 10,000 cycles without load
 OPERATING FORCE:
 300 ± 100 gf (2.94 ± 0.98 N)
 LOCK TRAVEL: 2 ± 0.3 mm
 TOTAL TRAVEL: 3 ± 0.3 mm
 OPERATING TEMPERATURE: -20°C to 70°C

Materials

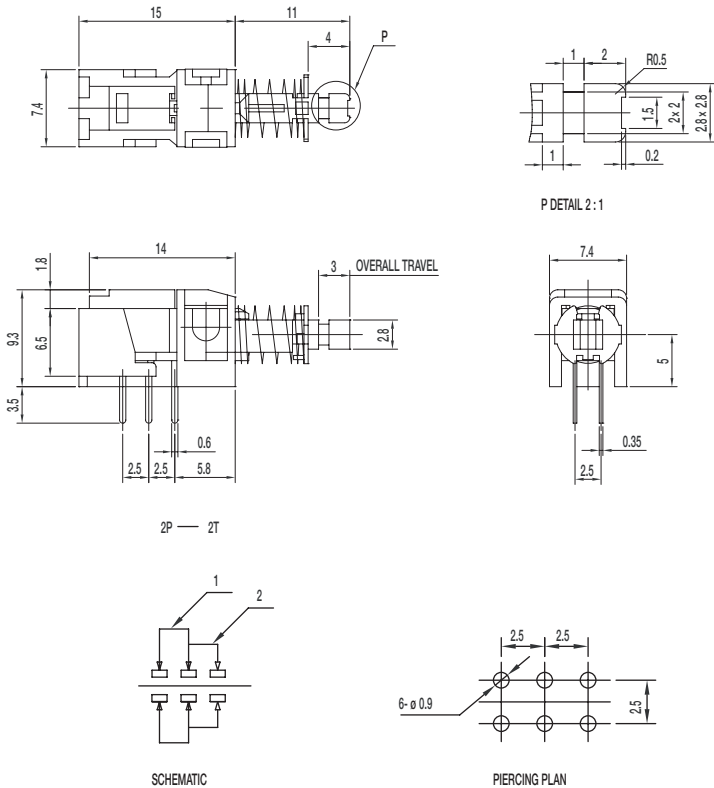
CASE: PC (UL 94HB)
 PLASTIC CLIP: POM (UL 94HB)
 SPRING: SUS
 KNOB: POM
 TERMINAL: Silver plated

PB Series Single Pole and Multi-Key Pushbutton Switches



A
Pushbutton

PB-22D01-F 2PDT NON-LOCK / MOMENTARY



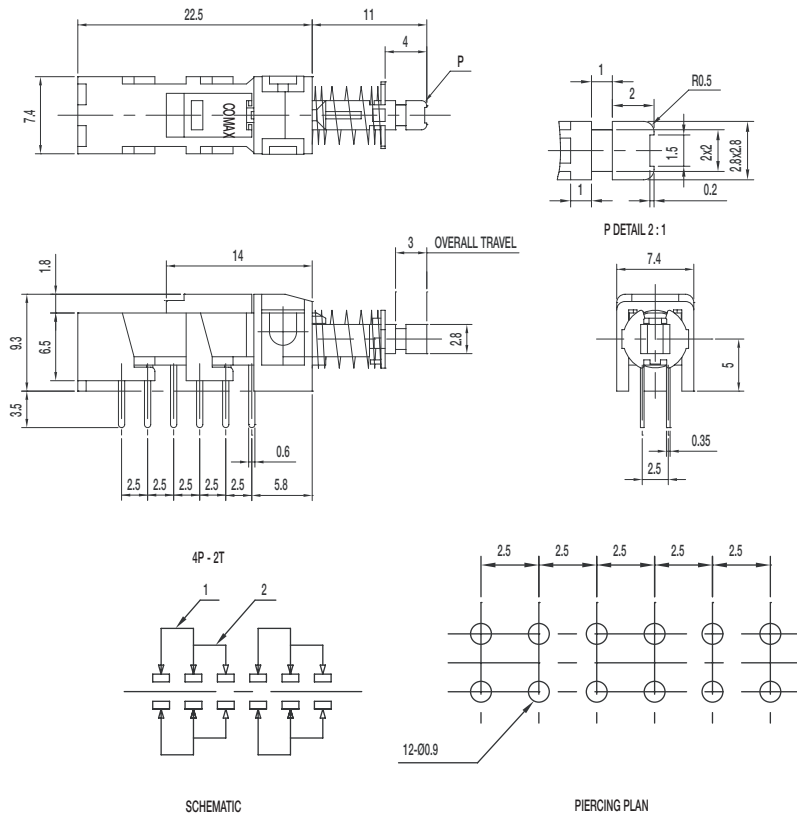
Specifications

CONTACT RATING: 0.3A @ 30 VDC
INITIAL CONTACT RESISTANCE: 30 m ohms max.
INSULATION RESISTANCE: 100 M ohms min.
DIELECTRIC STRENGTH: 500 V AC (50-60 Hz) between open terminals and between the frame and terminal.
OPERATING LIFE: 10,000 cycles without load
OPERATING FORCE:
250 ± 100 gf (2.45 ± 0.98N)
TOTAL TRAVEL: 3 ± 0.3 mm
OPERATING TEMPERATURE: -20°C to 70°C

Materials

CASE: PC (UL 94HB)
PLASTIC CLIP: POM (UL 94HB)
SPRING: SUS
KNOB: POM
TERMINAL: Silver plated

PB-42D01-F 4PDT NON-LOCK / MOMENTARY



Specifications

CONTACT RATING: 0.3A @ 30 VDC
INITIAL CONTACT RESISTANCE: 30 m ohms max.
INSULATION RESISTANCE: 100 M ohms min.
DIELECTRIC STRENGTH: 500 V AC (50-60 Hz) between open terminals and between the frame and terminal.
OPERATING LIFE: 10,000 cycles without load
OPERATING FORCE:
280 ± 100 gf (2.477 ± 0.98N)
TOTAL TRAVEL: 3 ± 0.3 mm
OPERATING TEMPERATURE: -20°C to 70°C

Materials

CASE: PC (UL 94HB)
PLASTIC CLIP: POM (UL 94HB)
SPRING: SUS
KNOB: POM
TERMINAL: Silver plated

C&K

Dimensions are shown: mm
Specifications and dimensions subject to change



PB Series Single Pole and Multi-Key Pushbutton Switches

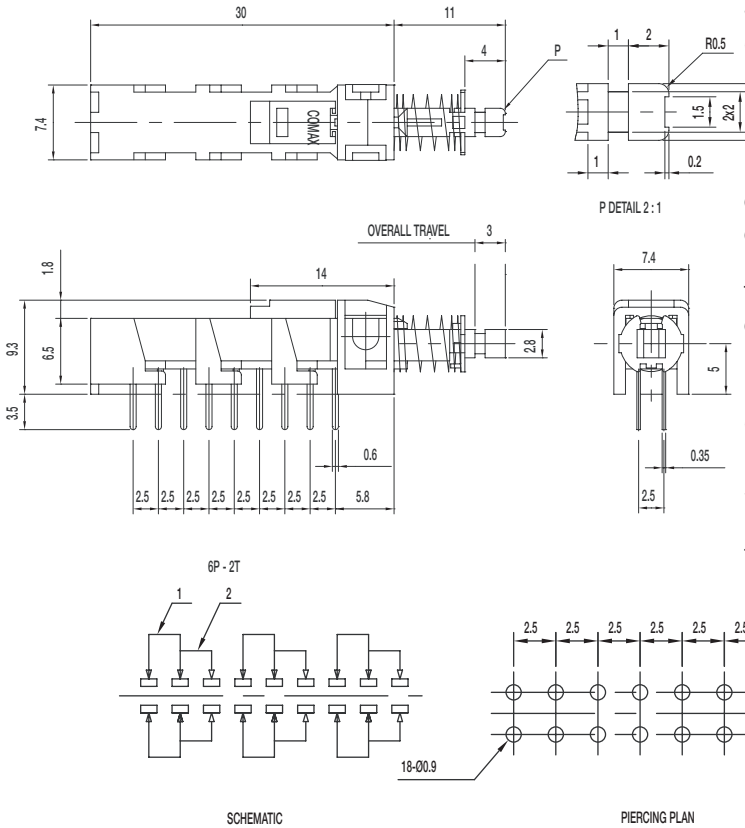
PB-62D01-F 6PDT NON-LOCK / MOMENTARY

Specifications

- CONTACT RATING: 0.3A @ 30 VDC
- INITIAL CONTACT RESISTANCE: 30 m ohms max.
- INSULATION RESISTANCE: 100 M ohms min.
- DIELECTRIC STRENGTH: 500 V AC (50-60 Hz) between open terminals and between the frame and terminal.
- OPERATING LIFE: 10,000 cycles without load
- OPERATING FORCE:
300 ± 100 gf (2.94 ± 0.98N)
- TOTAL TRAVEL: 3 ± 0.3 mm
- OPERATING TEMPERATURE: -20°C to 70°C

Materials

- CASE: PC (UL 94HB)
- PLASTIC CLIP: POM (UL 94HB)
- SPRING: SUS
- KNOB: POM
- TERMINAL: Silver plated



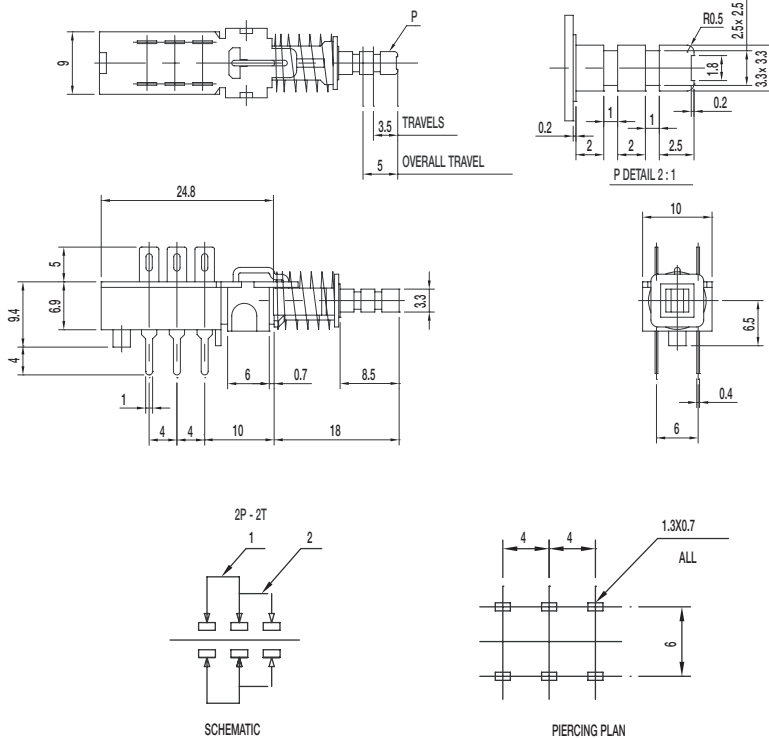
PB-22G02-L 2PDT LOCK / LATCHING

Specifications

- CONTACT RATING: 1A @ 25 VDC
- INITIAL CONTACT RESISTANCE: 30 m ohms max.
- INSULATION RESISTANCE: 100 M ohms min.
- DIELECTRIC STRENGTH: 500 V AC (50-60 Hz) between open terminals and between the frame and terminal.
- OPERATING LIFE: 10,000 cycles without load
- OPERATING FORCE:
350 ± 150 gf (3.43 ± 1.47N)
- LOCK TRAVEL: 3.5 ± 0.3mm
- TOTAL TRAVEL: 5 ± 0.3 mm
- OPERATING TEMPERATURE: -20°C to 70°C

Materials

- CASE: PC (UL 94HB)
- SPRING: SUS
- KNOB: POM
- TERMINAL: Silver plated

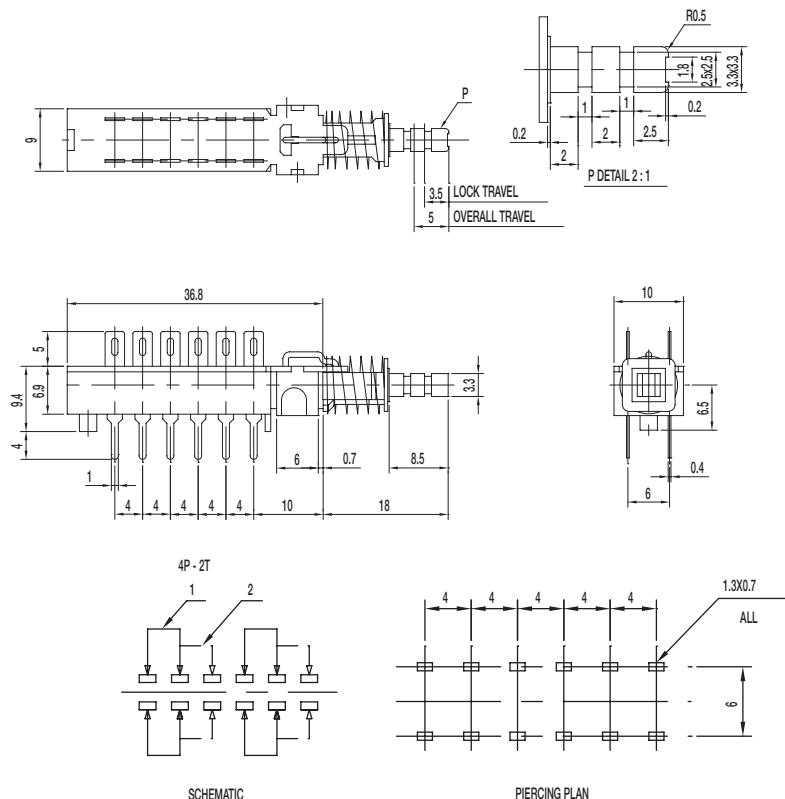


PB Series Single Pole and Multi-Key Pushbutton Switches



A
Pushbutton

PB-42G02-L 4PDT LOCK / LATCHING



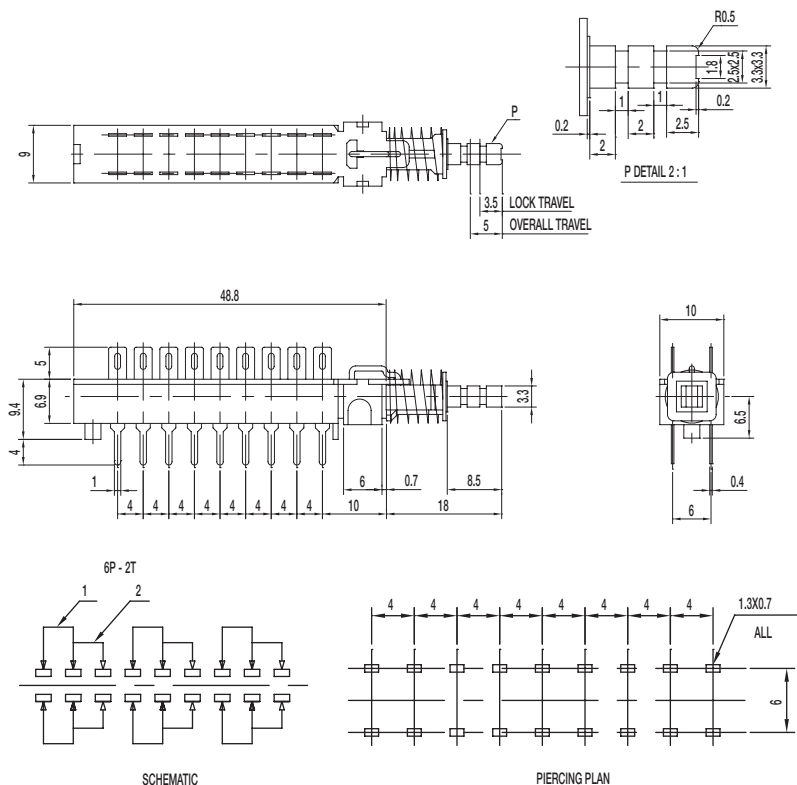
Specifications

CONTACT RATING: 1A @ 25 VDC
 INITIAL CONTACT RESISTANCE: 30 m ohms max.
 INSULATION RESISTANCE: 100 M ohms min.
 DIELECTRIC STRENGTH: 500 V AC (50-60 Hz) between open terminals and between the frame and terminal.
 OPERATING LIFE: 10,000 cycles without load
 OPERATING FORCE:
 400 ± 150 gf (3.92 ± 1.47N)
 LOCK TRAVEL: 3.5 ± 0.3mm
 TOTAL TRAVEL: 5 ± 0.3 mm
 OPERATING TEMPERATURE: -20°C to 70°C

Materials

HOUSING: PC (UL 94HB)
 SPRING: SUS
 KNOB: POM
 TERMINAL: Silver plated

PB-62G02-L DPDT LOCK / LATCHING



Specifications

CONTACT RATING: 1A @ 25 VDC
 INITIAL CONTACT RESISTANCE: 30 m ohms max.
 INSULATION RESISTANCE: 100 M ohms min.
 DIELECTRIC STRENGTH: 500 V AC (50-60 Hz) between open terminals and between the frame and terminal.
 OPERATING LIFE: 10,000 cycles without load
 OPERATING FORCE:
 450 ± 150 gf
 LOCK TRAVEL: 3.5 ± 0.3mm
 TOTAL TRAVEL: 5 ± 0.3 mm
 OPERATING TEMPERATURE: -20°C to 70°C

Materials

HOUSING: PC (UL 94HB)
 SPRING: SUS
 KNOB: POM
 TERMINAL: Silver plated



PB Series Single Pole and Multi-Key Pushbutton Switches

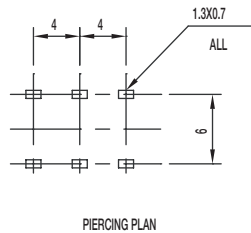
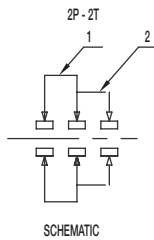
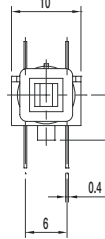
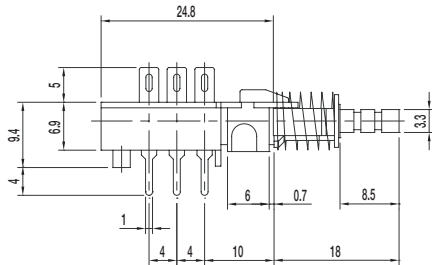
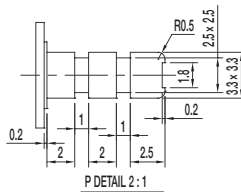
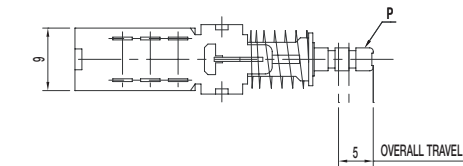
PB-22G02-F DPDT NON-LOCK / MOMENTARY

Specifications

CONTACT RATING: 1A @ 25 VDC
 INITIAL CONTACT RESISTANCE: 30 m ohms max.
 INSULATION RESISTANCE: 100 M ohms min.
 DIELECTRIC STRENGTH: 500 V AC (50-60 Hz) between open terminals and between the frame and terminal.
 OPERATING LIFE: 10,000 cycles without load
 OPERATING FORCE:
 350 ± 150 gf (3.43 ± 1.47 N)
 TOTAL TRAVEL: 5 ± 0.3 mm
 OPERATING TEMPERATURE: -20°C to 70°C

Materials

CASE: PC (UL 94HB)
 SPRING: SUS
 KNOB: POM
 TERMINAL: Silver plated



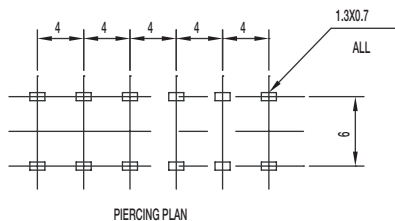
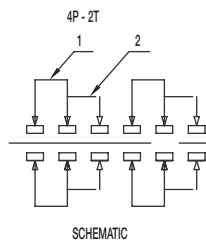
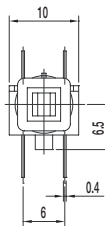
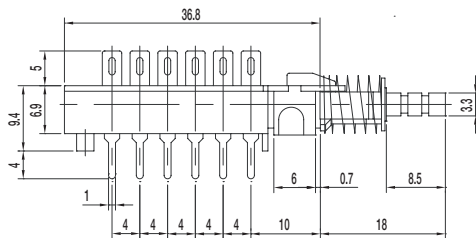
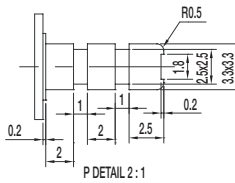
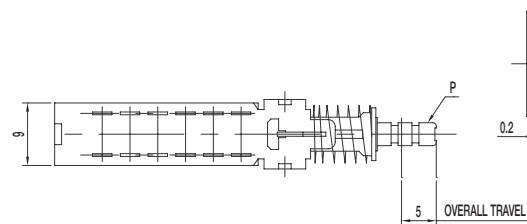
PB-42G02-F 4PDT NON-LOCK / MOMENTARY

Specifications

CONTACT RATING: 1A @ 25 VDC
 INITIAL CONTACT RESISTANCE: 30 m ohms max.
 INSULATION RESISTANCE: 100 M ohms min.
 DIELECTRIC STRENGTH: 500 V AC (50-60 Hz) between open terminals and between the frame and terminal.
 OPERATING LIFE: 10,000 cycles without load
 OPERATING FORCE:
 400 ± 150 gf (3.92 ± 1.47 N)
 TOTAL TRAVEL: 5 ± 0.3 mm
 OPERATING TEMPERATURE: -20°C to 70°C

Materials

HOUSING: PC (UL 94HB)
 SPRING: SUS
 KNOB: POM
 TERMINAL: Silver plated



A Pushbutton

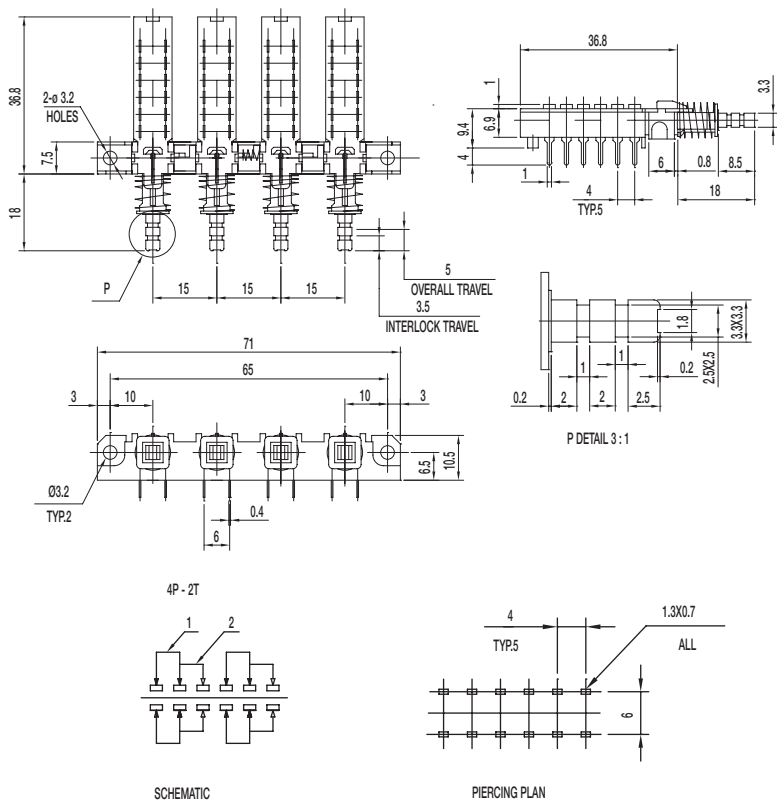


PB Series Single Pole and Multi-Key Pushbutton Switches

PB Multi-Key Series

Pushbutton

A



Specifications

CONTACT RATING: 0.3A @ 30 VDC

INITIAL CONTACT RESISTANCE: 30 m ohms max.

INSULATION RESISTANCE: 100 M ohms min.

DIELECTRIC STRENGTH: 500 V AC (50-60 Hz) between open terminals and between the frame and terminal.

OPERATING LIFE: 10,000 cycles without load

OPERATING FORCE:

250 ± 100 gf (2.45 ± 0.98N)

TOTAL TRAVEL: 3 ± 0.3 mm

OPERATING TEMPERATURE: -20°C to 70°C

Materials

CASE: PC (UL 94HB)

PLASTIC CLIP: POM (UL 94HB)

SPRING: SUS

KNOB: POM

TERMINAL: Silver plated

Mouser Electronics

Authorized Distributor

Click to View Pricing, Inventory, Delivery & Lifecycle Information:

C&K Switches:

[PB3KD2C444XTNS](#) [PB42G02FNS](#) [PB1KG0A2FXNS](#) [PB3KG5B222XTPNS](#) [PB22G02LNSWNR](#)
[PB3KD7C666XTNS](#) [PB22G02FPNS](#) [PB4KG2A2222XTPNSX5](#) [PB42G02FPNS](#) [PB22G02LNSK2NR](#) [PB22G02LNS](#)
[PB42D02FNS](#) [PB22D01LNS](#) [PB22G02LPNS](#) [PB22D01FNS](#) [PB1KG0A2LXNS](#) [PB4KD7C6666XTS](#)
[PB4KG5B4224XTPNS](#) [PB22G02FNS](#) [PB42G02FNSWNR](#) [PB3KG5B222XTNS](#) [PB42G02LNSK2NR](#)
[PB3KG5B242XTPNS](#) [PB22G02LXNS](#) [PB4KD5C6666XTS](#) [PB22G02FNSK2NR](#) [PB22G02FPNSL](#) [PB42G02LNS](#)
[PB22G02FXNS](#) [PB42G02LNSWNR](#) [PB42G02LPNS](#) [PB42D02FS](#) [PB42D01LNS](#) [PB42G02FNSK2NR](#)
[PB3KG5B242XTNS](#) [PB3KG2B242XTNS](#) [PB22G02FPNSK2NR](#)