

P Series

4 Tumbler Snap-in Switchlocks



Models Available

Features/Benefits

- **Snap-in mounting**
- **Multi-pole and multi-position**
- **Positive detent**

Typical Applications

- **Computers**
- **Communication equipment**

Specifications

CONTACT RATING: Q contact material: 4 AMPS @ 125 V AC;
1 AMP @ 250 V AC (UL) See page L-20 for additional ratings.
ELECTRICAL LIFE: 10,000 make-and-break cycles at full load.
CONTACT RESISTANCE: Below 10 m Ω typ. initial @
2-4 V DC, 100 mA for both silver and gold plated contacts.
INSULATION RESISTANCE: 10⁹ Ω min.
DIELECTRIC STRENGTH: 1,000 Vrms min. @ sea level.
INDEXING: 45° or 90°, 2-3 positions.

Materials

SWITCH HOUSING & LOCK: One piece construction,
6/6 Nylon (UL 94V-2), black
4 disc tumbler mechanism.
KEYS: One nickel plated brass key and one key with insert
molded plastic head.
TUMBLERS: Disc tumblers, brass.
CONTACTS & TERMINALS: Q contact material: Copper, silver
plated. See page L-20 for additional contact materials.

NOTE: Any models supplied with Q or B contact material are RoHS compliant.

NOTE: Specifications and materials listed above are for switchlocks with standard options.
For information on specific and custom switchlocks, consult Customer Service Center.

Build-A-Switch

To order, simply select desired option from each category and place in the appropriate box. Available options are shown and described on pages L-19 and L-21. For additional options not shown in catalog, consult Customer Service Center.



Switch and Lock Function

- P10113** SP, 90° Index, keypull pos. 1
P20113 DP, 90° Index, keypull pos. 1 & 2
P100AF SP, 45° Index, keypull pos. 1, 2 & 3
P200AF DP, 45° Index, keypull pos. 1, 2 & 3
P1011U SP, 90° Index, keypull pos. 1 & 2

Keying

- 2** Two nickel plated brass keys
T One nickel plated brass key
with insert molded plastic
square head and one
nickel plated brass key

Lock Type

- C** 4 tumbler lock with detent

Lock Finish

- M** Plastic lock with matte finish

Terminations

- 03** Solder lug
WC Wire lead

Contact Material

- Q** Silver
G Gold over silver

Lock Color

- 2** Black

Key Color

- 2** Black
NONE Nickel plated brass



Switchlock



28 Jan 21

P Series

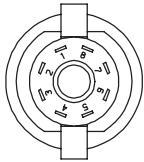
4 Tumbler Snap-in Switchlocks

SWITCH AND LOCK FUNCTION



NO. POLES	MODEL NO.	CONNECTED TERMINALS			KEY PULL POSITIONS	LOCK CONFIGURATION	INDEXING
		POS. 1	POS. 2	POS. 3			
SP DP	P10113 P20113	8-1 8-1, 4-5	1-3 1-3, 5-7		Position 1		90°
DP	P100AF P200AF	8-1 8-1, 4-5	1-2 1-2, 5-6	2-3 2-3, 6-7	Positions 1, 2 & 3		45°
SP	P1011U	8-1	1-3		Positions 1 & 2		90°

TERMINAL NUMBERS

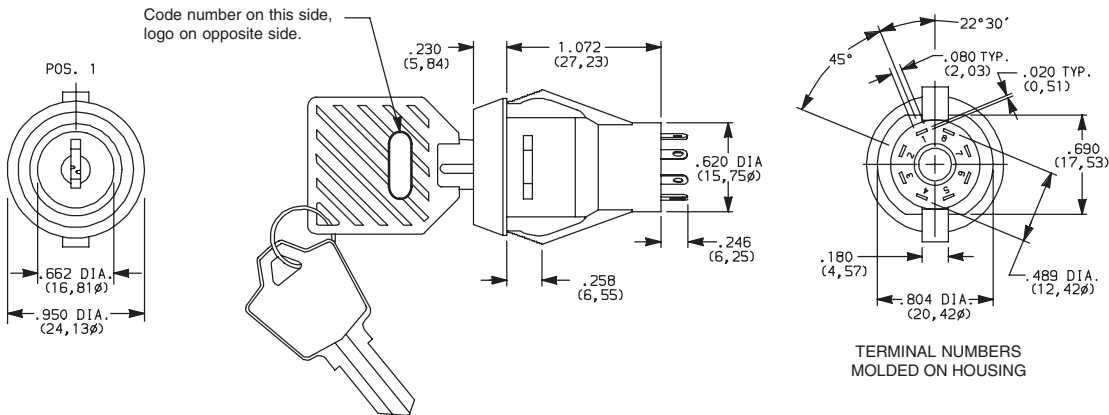


Terminal numbers molded on housing.

All models with all options when ordered with 'Q' contact material.

LEGEND

- = Detent Positions (45° or 90°)
- ⊙ = Key pull possible in these positions.
- = Stop Positions



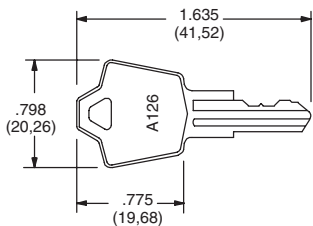
Part number shown: P100AFTCM03Q22

KEYING



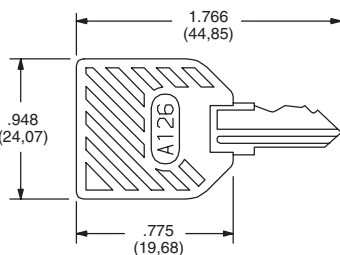
OPTION CODE	KEYING OPTIONS	CODE NO. ON KEY	CODE NO. ON LOCK
2	2 NICKEL PLATED BRASS KEYS	YES	NO
T	1 NICKEL PLATED BRASS KEYS, WITH PLASTIC INSERT MOLDED SQUARE HEAD & 1 NICKEL PLATED BRASS KEY	YES	NO

NICKEL PLATED BRASS KEY



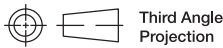
Key part number: 115140126

NICKEL PLATED BRASS KEY WITH PLASTIC INSERT MOLDED SQUARE HEAD



Key part number: 11599112602

NOTE: All orders keyed alike with code number on key. For more than one key code, replacement keys, or other special features, consult Customer Service Center.



Third Angle Projection

Dimensions are shown: Inch (mm)
Specifications and dimensions subject to change



28 Jan 21



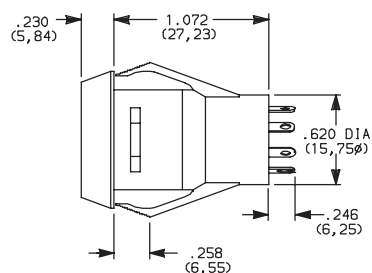
Switchlock

P Series

4 Tumbler Snap-in Switchlocks

LOCK TYPE

C 4 TUMBLER LOCK WITH DETENT



OPTION CODE	LOCK COLOR
2	BLACK

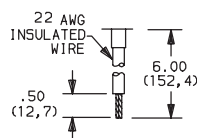
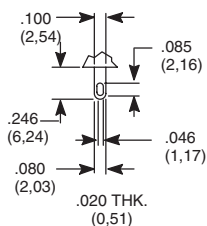
LOCK FINISH

M PLASTIC LOCK WITH MATTE FINISH

TERMINATIONS

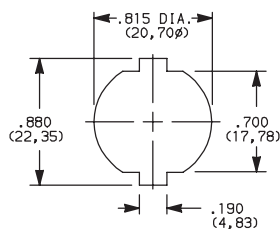
03 SOLDER LUG

WC WIRE LEAD



Black wire standard, other colors and lengths available, consult Customer Service Center. UL style 1015.

PANEL MOUNTING



Panel Thickness: .100-.200 (2,54-5,08)

CONTACT MATERIAL

OPTION CODE	RoHS COMPLIANT*	RoHS COMPATIBLE*	CONTACT AND TERMINAL MATERIAL	RATING	
Q	YES	YES	SILVER ²	POWER	4 AMPS @ 125 V AC; 1 AMP @ 250 V AC (UL/CSA)
G	YES	YES	GOLD OVER SILVER ³	LOW LEVEL/DRY CIRCUIT OR POWER	0.4 VA MAX. @ 20 V AC or DC MAX. or 4 AMPS @ 125 V AC; 1 AMP @ 250 V AC (UL/CSA)

* Note: See Technical Data section of this catalog for RoHS compliant and compatible definitions and specifications.

² CONTACTS & TERMINALS: Copper, silver plated (standard with all termination options)

³ CONTACTS & TERMINALS: Copper, with gold plate over silver plate termination

All models **C&K** with all options when ordered with 'Q' contact material.



Third Angle Projection



28 Jan 21

Dimensions are shown: Inch (mm)
Specifications and dimensions subject to change



Switchlock

P Series
4 Tumbler Snap-in Switchlocks

AVAILABLE HARDWARE



Key Code: A126
4 TUMBLER
PART NO. (ONE KEY)
115140126
Material: Brass
Finish: Nickel plate



Key Code: A126
4 TUMBLER
PART NO. (ONE KEY)
1159112602 BLACK
Material: Brass
Finish: Nickel plate
6/6 Nylon insert molded
head



Switchlock



Third Angle
Projection

Dimensions are shown: Inch (mm)
Specifications and dimensions subject to change

Mouser Electronics

Authorized Distributor

Click to View Pricing, Inventory, Delivery & Lifecycle Information:

C&K Switches:

[P20113TCM03Q22](#) [P201132CM03G2](#) [P200AF2CM03G2](#) [P101132CM03Q2](#) [P201132CM03Q2](#) [P10113TCMWCQ22](#)
[P200AFTCM03Q22](#) [P1011UTCM03Q22](#) [P20113TCMWCQ22](#) [P10113TCM03Q22](#) [P101132CMWCG2](#)
[P1011U2CM03Q2](#) [P2011U3WM03NQ2](#) [P101133WM03NQ2](#) [P201132WM03NQ2](#) [P101132WM03NQ2](#)
[P201133WM03NQ2](#) [P2011U2WM03NQ2](#) [P1011U2WM03NQ2](#) [P1011U2CMWCG2](#) [P1011UTCMWCG22](#)