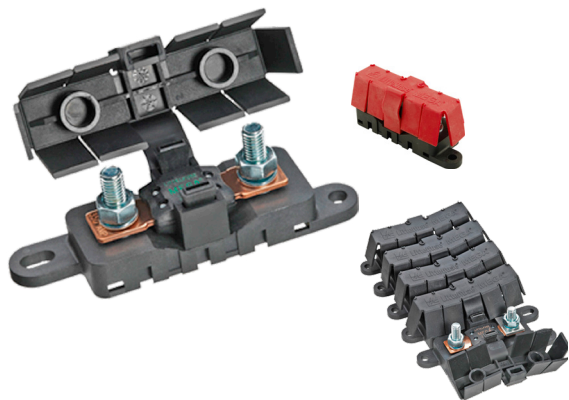


# FLEX MEGA® FUSE HOLDER

## 32V DC • 500A • In-Line • Interlocking for Multi-Pole Fuse Holder Assemblies



### Description

The FLEX MEGA® fuse holder is designed to be used with the Littelfuse MEGA® style bolt-down fuse, which is available up to 500 A.

This holder offers a flexible cover, which allows cable entry from virtually any direction, large wire size, and ring terminal stack up. Slots on the base allow holder to be mounted with tie wraps. Dovetail features allow you to interlock multiple FLEX MEGA® fuse holders together for a high power distribution block. Bus bars are available for multiple holder applications.

### Features and Benefits

- Flexible cover allows for cable entry from virtually any direction allowing for easier installation.
- Dovetail features allow you to interlock multiple Flex holders together to create a high power distribution block. Combine with the Flex-MIDI fuseholder for a high and low amperage solution.
- Slots are molded into the base that allow the holder to be securely mounted with tie-wraps.
- Stainless steel or zinc plated steel hardware and tin-plated 100% pure copper optimize long-term corrosion protection.

### Specifications Overview

<b>Max Voltage Rating:</b>	32V DC
<b>Max Current Rating:</b>	500A
<b>Wire Size:</b>	8 mm <sup>2</sup> to 35 mm <sup>2</sup>
<b>Stud Torque</b> (M8 Threads):	12-18 Nm
<b>Mounting Torque</b> (M6 Bolts & Washers):	5 Nm
<b>Temperature Range:</b>	-40 to +125 °C
<b>Flammability Rating:</b>	UL94 V-0
<b>Dimensions:</b>	121.4 x 36.8 x 44.5 mm

### Recommended Fuses

- Littelfuse series: MEGA®
- Also accepts competitive cross-reference equivalent fuses

### Web Resources

Download 2D outline and additional technical resources at:  
[littelfuse.com/flex-mega](http://littelfuse.com/flex-mega)

### Ordering Information

BULK PART NUMBER	BLISTER PART NUMBER	DESCRIPTION	MATERIAL (STUDS AND HARDWARE)
02981028HXFC	—	Complete Assembly	Zinc-Plated Steel
02981028HXFC-SS	02981028-BP	Complete Assembly	Stainless Steel
02981028HXFC-RED	—	Complete Assembly with Red Cover	Stainless Steel
02981028HXFCB	—	Base Only (no hardware)	Zinc-Plated Steel
02981028HXFCC	—	Cover Only	—
882-839-2	—	2-Position Bus Bar	Tin-Plated Copper
882-839-3	—	3-Position Bus Bar	Tin-Plated Copper
882-839-4	—	4-Position Bus Bar	Tin-Plated Copper
882-839-5	—	5-Position Bus Bar	Tin-Plated Copper

# Mouser Electronics

Authorized Distributor

Click to View Pricing, Inventory, Delivery & Lifecycle Information:

[Littelfuse:](#)

[02981028HXFC-0](#)