

08098700 & 08099080 BATTERY DISCONNECT SWITCHES

100-150A • SPST • UP4X/IP43 • M8-M10 Studs • Compact

08098700 M8
08098780 M10

08099000 M8
08099080 M10

Threaded
brass pads
by 08098768



Description

08098700 is Standard Compact Manual Battery Disconnect Switch that features a removable handle with a plastic body. Rated to 100A continuous current this switch is ideal for light-duty applications.

08099000 same 08098700 but with rubber cap included for protection while switch is removed from the socket.

08098780 is a newer design with bigger contacts (M10) and improved components for heavier 150A current loads in the same compact dimensions, which make it one of the more popular products for 12V applications. This Manual Battery Disconnect Switch features a removable handle with a plastic body.

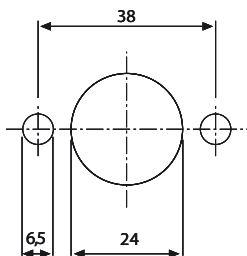
08099080 same 08098780 but with rubber cap included for protection while switch is removed from the socket.

Features/Benefits

- 100-150A continuous current rating
- Heavy Construction for up to 150A loads in compact design
- Highly visible bright red handle
- Weatherproof to IP43

Mounting Diagram

There are no functionality issues related to installation



Specifications

| | |
|--------------------------------|---|
| Max Operating Voltage: | 24V DC |
| Max Continuous Current: | 100A 150A |
| Intermittent Current: | 500A at 5 sec 1000A at 5 sec |
| Operating Temp: | -40 °C to +85 °C |
| Ingress Protection: | IP4X IP43 |
| Contacts: | Copper |
| Terminals: | M8 (zinc-plated steel nuts) M10 (zinc-plated steel and brass nuts) |

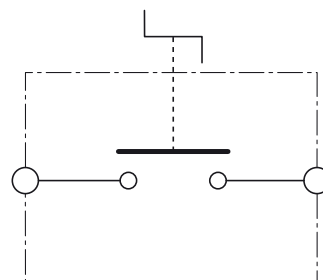
Applications

- Off-Road
- Marine
- Agricultural

Web Resources

Download technical resources at:
littelfuse.com/ManualBatterySwitches

Electrical Diagram



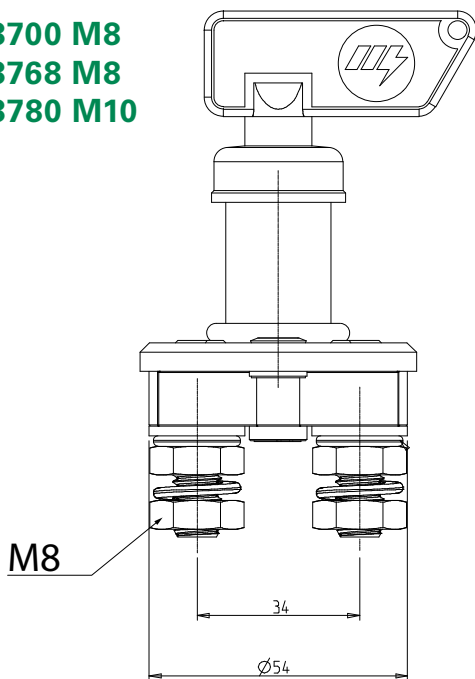
Ordering Information

| PART NUMBER | VOLTAGE | AMPERAGE | CIRCUITRY | MOUNTING | INGRESS | TERMINAL NUTS | NOTES |
|-------------|------------|----------|-----------|--------------|---------|-----------------------|-----------------------|
| 08098700 | 12V-24V DC | 100A | SPST | Flange Mount | IP4X | M8 Steel zinc-plated | |
| 08098768 | 12V-24V DC | 100A | SPST | Flange Mount | IP4X | M8 Steel zinc-plated | Threaded brass pads |
| 08098780 | 12V-24V DC | 150A | SPST | Flange Mount | IP4X | M10 Brass | |
| 08099000 | 12V-24V DC | 100A | SPST | Flange Mount | IP43 | M8 Steel zinc-plated | Rubber protection cap |
| 08099080 | 12V-24V DC | 150A | SPST | Flange Mount | IP43 | M10 Steel zinc-plated | Rubber protection cap |

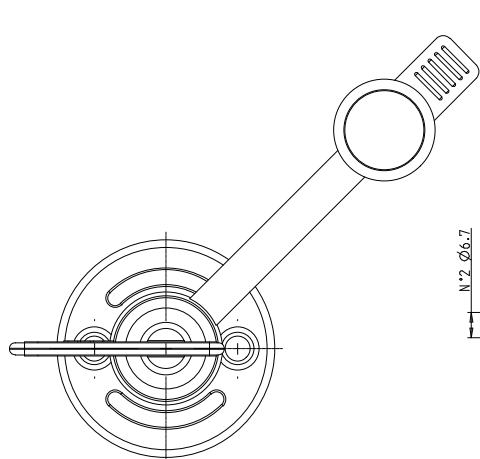
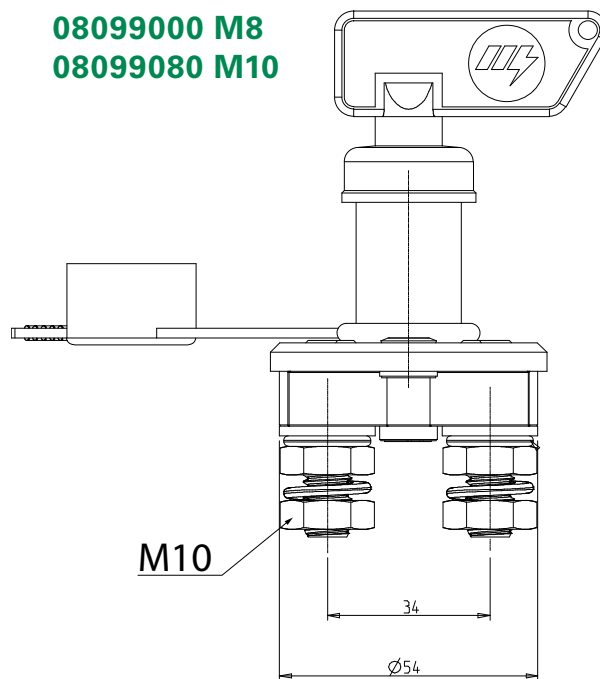
08098700 & 08099080 BATTERY DISCONNECT SWITCHES

Dimensions in millimeters

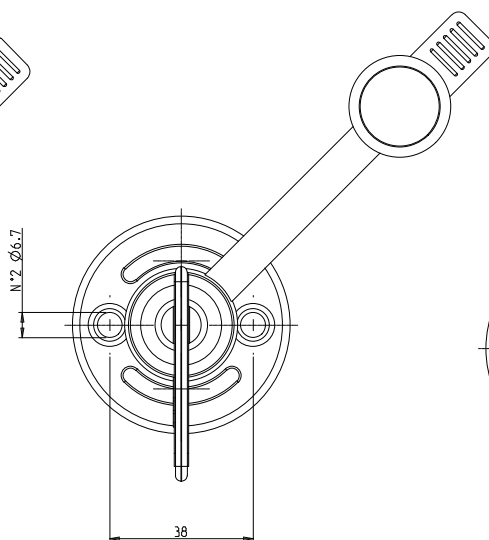
08098700 M8
08098768 M8
08098780 M10



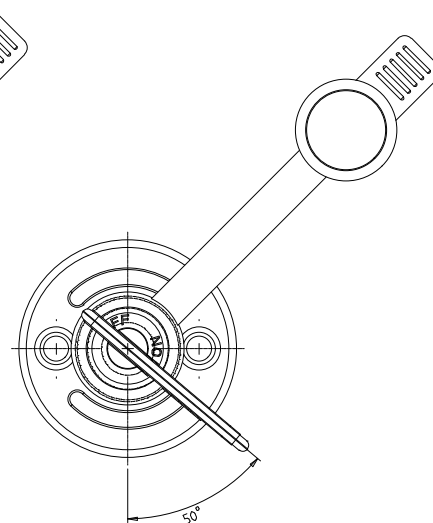
08099000 M8
08099080 M10



Close contact



Open contact



**Plugging in/Pull
Out Key**



Visit Littelfuse.com for the most up-to-date product information. Littelfuse reserves the right to make product changes, without notice. Material in this document is as accurate as known at the time of publication.

Mouser Electronics

Authorized Distributor

Click to View Pricing, Inventory, Delivery & Lifecycle Information:

Littelfuse:

[08099000](#) [08099000-WBG](#) [08098768](#)