

08098800 & 08098981 BATTERY DISCONNECT SWITCHES

250/350A • SPST • IP65-9K • M10/M12 Studs



Description

250A/350A Manual battery master switch with removable or fixed handle and locked.

Available with weather protective boots.

08098800 Base unit with removable handle, Interchangeable with Bosch 0341002003 switches

08098880 As 08098800 with gasket and chain.

08098881 Unit with removable handle and chain. Equipped with red, yellow and black rubber boots for weather protection and to help identify different applications.

08098882 Unit with fixed handle and integrated lock-out tag-out. Equipped with red, yellow and black rubber boots for weather protection and to help identify different applications.

08098883 Unit with removable handle and chain. Equipped with one black rubber cap

08098400 Unit with push-button. Switch-ON by handle rotation. Quick Switch-OFF by pressing.

08098900 As 08098800 but 350A

08098980 As 08098900 with gasket and chain.

08098981 As 08098900 but fixed handle.

Features/Benefits

- 250A/350A continuous current rating
- Interchangeable with Bosch master disconnect switches

Specifications

Max Operating Voltage:	24V DC
Max Continuous Current:	250A 350A
Intermittent Current:	2500A at 3 sec 600Ax120 sec.(versions 250A) 1200x120 sec. (versions 350A)
Operating Temp:	-40 °C to +85 °C
Ingress Protection:	IP65-9K
Contacts:	Silver-plated Copper
Terminals:	M10 M12

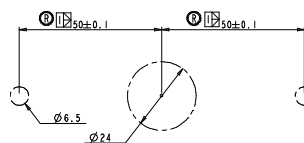
Applications

- Heavy Truck
- Off-Road
- Emergency Vehicles
- Material Handling
- Mining
- Agricultural
- Marine
- Forklift

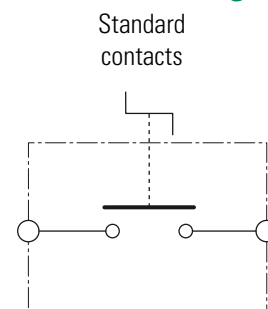
Web Resources

Download 2D prints and additional technical resources at:
littelfuse.com/ManualBatterySwitches

Mounting Diagram



Electrical Diagram

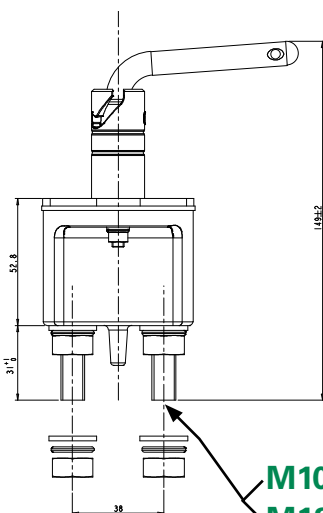


Ordering Information

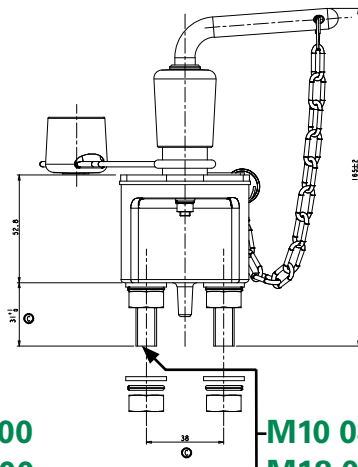
PART NUMBER	VOLTAGE	AMPERAGE	CIRCUITRY	MOUNTING	INGRESS	TERMINAL NUTS	NOTES
08098800	12V-24V DC	250A	SPST	Through-Hole	IP65	M10 Steel zinc-plated	Remov. Handle
08098880	12V-24V DC	250A	SPST	Through-Hole	IP65	M10 Steel zinc-plated	Remov. Handle
08098881	12V-24V DC	250A	SPST	Through-Hole	IP65-9K	M10 Steel zinc-plated	Remov. Handle
08098882	12V-24V DC	250A	SPST	Through-Hole	IP65-9K	M10 Steel zinc-plated	Fixed Handle
08098883	12V-24V DC	250A	SPST	Through-Hole	IP65-9K	M10 Steel zinc-plated	Remov. Handle
08098900	12V-24V DC	350A	SPST	Through-Hole	IP65	M12 Steel zinc-plated	Remov. Handle
08098980	12V-24V DC	350A	SPST	Through-Hole	IP65-9K	M12 Steel zinc-plated	Remov. Handle
08098981	12V-24V DC	350A	SPST	Through-Hole	IP65-9K	M12 Inox	Fixed Handle
08098400	12V-24V DC	250A	SPST	Through-Hole	IP65	M10 Brass	Push Button

08098800 & 08098981 BATTERY DISCONNECT SWITCHES

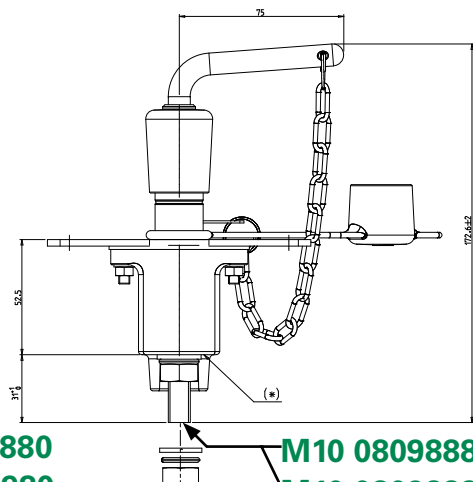
Dimensions in millimeters



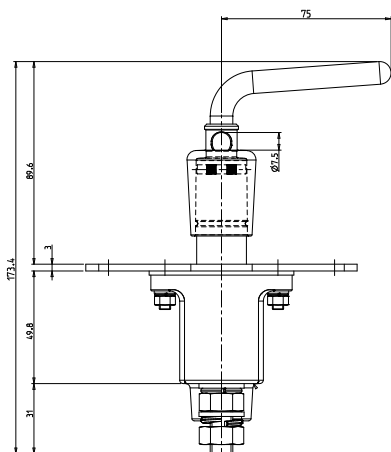
M10 08098800
M12 08098900



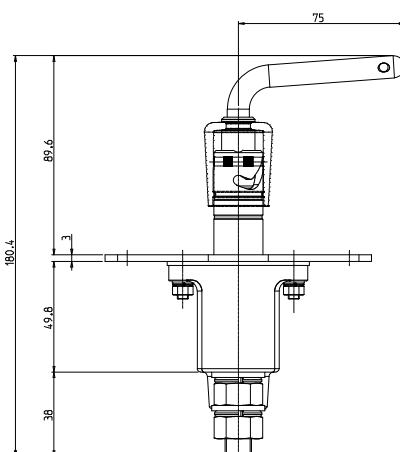
M10 08098880
M12 08098980



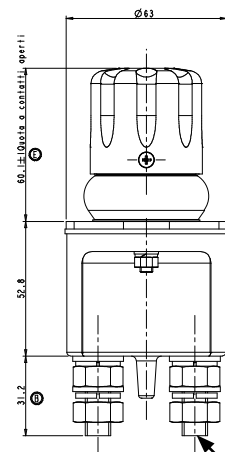
M10 08098881
M10 08098883



M10 08098882



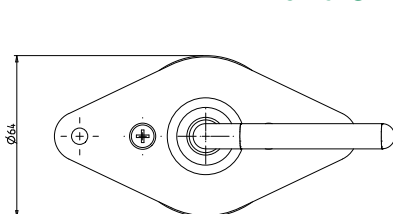
M12 08098981



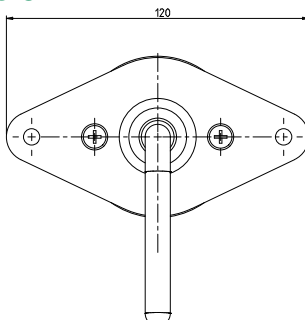
M10 08098400

Handle Version

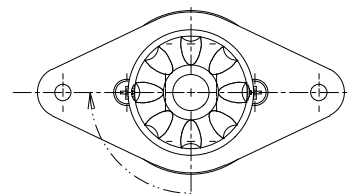
08098400



Open contact



Close contact



Close contact whit
rotation push button



Visit Littelfuse.com for the most up-to-date product information. Littelfuse reserves the right to make product changes, without notice. Material in this document is as accurate as known at the time of publication.

Mouser Electronics

Authorized Distributor

Click to View Pricing, Inventory, Delivery & Lifecycle Information:

Littelfuse:

08098883 08098880