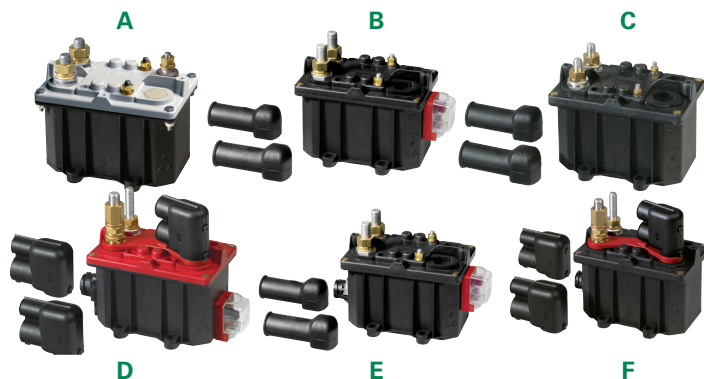


# 08097160 & 08098100 BATTERY DISCONNECT SWITCHES

250A-350A • SPST • IP65 • M10/M12 Studs • Electrical bistable remote control



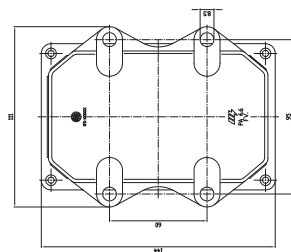
## Description

In shape and design the current isolating switches with mechanical ON-OFF position are very similar to the models described in the preceding section. But there is one difference: while traditional current isolating switches require a minimum current when they are turned on, models with “mechanical ON-OFF position” absorb current only during the commuting phase or when switched from (OFF) to (ON) and vice versa. Generally referred to as “bistable with zero consumption”, their switches turn to closed or open state of the electric circuit.

## Features/Benefits

- 250A-350A continuous current rating
- Waterproof IP65/IPX7

## Mounting Diagram



## Specifications

<b>Max Operating Voltage:</b>	12V DC 24V DC
<b>Max Continuous Current:</b>	250A 08097200-08097260-08091761-08097860-08098100 350A 08097160-08097161-08097261-08097262
<b>Intermittent Current:</b>	2500A at 3 sec
<b>Operating Temp:</b>	-40 °C to +85 °C
<b>Ingress Protection:</b>	IP65
<b>Contacts:</b>	Tin-plated Brass
<b>Terminals:</b>	M10 - M12 (brass)

## Applications

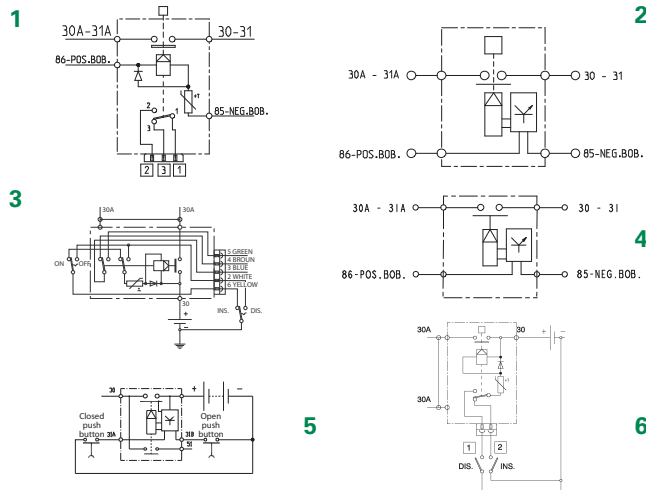
- Heavy trucks
- Buses
- Construction
- Commercial vehicles
- Agricultural
- Marine

## Web Resources

Download technical resources at:  
[littelfuse.com/ElectricalBatteryDisconnectSwitches](http://littelfuse.com/ElectricalBatteryDisconnectSwitches)

## Electrical Diagram

All the range ± disconnection separate coil feeding



## Ordering Information

PART NUMBER	VOLTAGE	AMPERAGE	CIRCUITRY	MOUNTING	INGRESS	TERMINAL NUTS	IMAGE	DIAGRAM	NOTES
08097160	12V DC	350A	SPST	Bolt-Down	IP65-IPX7	M12 Tin-plated brass	B	2	manual remote control
08097161	12V DC	350A	SPST	Bolt-Down	IP65-IPX7	M12 Tin-plated brass	E	1	manual remote control
08097200	24V DC	250A	SPST	Bolt-Down	IP65-IPX7	M10 Tin-plated brass	C	4	separate ON-OFF switch
08097260	24V DC	250A	SPST	Bolt-Down	IP65-IPX7	M10 Tin-plated brass	C	4	protection cover
08097261	24V DC	350A	SPST	Bolt-Down	IP65-IPX7	M12 Tin-plated brass	B	2	manual remote control
08097262	24V DC	350A	SPST	Bolt-Down	IP65-IPX7	M12 Tin-plated brass	E	1	manual remote control
08091761	24V DC	250A	SPST	Bolt-Down	IP65-IPX7	M10-M12 Tin-plated brass	F	6	stif protection sheath
08097860	24V DC	250A	SPST	Bolt-Down	IP65-IPX7	M10-M12 Tin-plated brass	D	3	manual remote control
08098100	24V DC	250A	SPST	Bolt-Down	IP65-IPX7	M10 Tin-plated brass	A	5	disconnection the alternator



# Mouser Electronics

Authorized Distributor

Click to View Pricing, Inventory, Delivery & Lifecycle Information:

[Littelfuse:](#)

[08097262](#)