

KSC4V2 Series

Side Actuated Sealed Tact Switch

Features/Benefits

- Full SMD side actuated
- Haptic adaptability
- Pin in paste terminations
- Tape & reel
- IP67

Typical Applications

- Automotive
- Industrial electronics
- Network equipment
- Telecommunications



Specification

FUNCTION: momentary action

CONTACT ARRANGEMENT: 1 make contact = SPST, N.O.

TERMINALS:

2 pin in paste signal terminals

3 SMD ground terminals

Mechanical

Type	Force (N)	Operating Life (operations)	Travel (mm)
KSC441V2 70SH SP DELTA LFS	3.5 ± 1.0	300,000	0.7 ± 0.2
KSC421V270SHLFS	1.55 ± 0.45	300,000	0.45 ± 0.25

NOTE: Basic version is based on KSC441V2 SPDELTA LFS.

Other configurations of haptics are available upon demand.

MISUSE OVERLOAD: 40N with back support

SHEAR FORCE: 10N without back support

Electrical

	Silver	Gold
MAXIMUM POWER:	1 VA	0.2 VA
MAXIMUM VOLTAGE:	32 VDC	32 VDC
MINIMUM VOLTAGE:	20 mV	20 mV
MAXIMUM CURRENT:	50 mA	10 mA
MINIMUM CURRENT:	1 mA	0.1 mA

DIELECTRIC STRENGTH (50 Hz, 1 min.): ≥ 250 Vrms

CONTACT RESISTANCE: ≤ 100 mΩ

INSULATION RESISTANCE (100 V, initial stage): > 10⁹ Ω

BOUNCE TIME: < 1 ms

Environmental

OPERATING TEMPERATURE:

Silver

-40°C to 85°C

Gold

-40°C to 125°C

STORAGE TEMPERATURE:

-55°C to 85°C

-55°C to 125°C

Process

SOLDERING: Depending on the application, this component is suited to the following methods:

- Cleaning according to typical washing processes.
- Lead free reflow soldering process in accordance with IEC 61760-1.

TERMINALS: pin in paste, silver or gold plated

TOP PLATE: tin plated

MSL level: 1

Vacuum pick head mandatory

Packaging

In reels of 800 pieces.

Dimensions of reels according to EIA RS481 or IEC 2863.

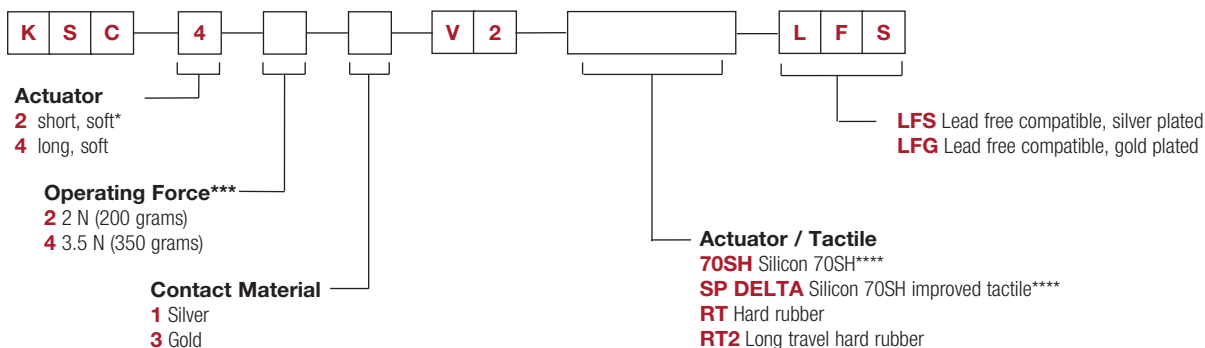
External diameter 380 mm ± 2 mm.

NOTE: This product is designed and manufactured for general electronic devices. For systems where reliability and safety are required, please contact your sales representative to secure product integration and function to secure usage.

How To Order

Our easy build-a-switch concept allows you to mix and match options to create the switch you need. To order, select desired option from each category and place it in the appropriate box.

For any part number different from those listed above, please consult your local representative.

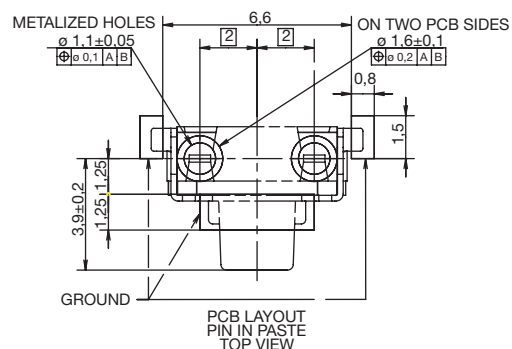


* KSC2 version available upon demand

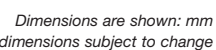
*** Force available upon demand (variant version)

**** Available for KSC4 only

Tactile Switches



A schematic diagram of a rigid back support. It shows a cross-section of a person's back and torso. A rectangular box labeled "Rigid back support" is positioned behind the lower back, supporting the lumbar region. The support is connected to a horizontal cylinder, which is part of a larger mechanical system. The diagram illustrates how the support would interact with the spine and surrounding structures.



Mouser Electronics

Authorized Distributor

Click to View Pricing, Inventory, Delivery & Lifecycle Information:

[C&K Switches:](#)

[KSC443 V2 SP DELTA LFG](#) [KSC443 V2 70 SH SP DELTA LFG](#)