

# DM Series Miniature 2 Pole Power Rocker Switches



## Features/Benefits

- 3 AMPS to 10 AMPS
- Quick connect terminals
- Double pole in miniature size
- Recessed bracket available—prevents accidental actuation
- RoHS compliant

## Typical Applications

- Computers
- Appliances
- Electric tools

UL 61058-1



## Specifications

CONTACT RATING:

DM21, DM22:

GP (general purpose)

3 AMPS 125 VAC 50/60 Hz T85 10,000 cycles

2 AMPS 250 VAC 50/60 Hz T85 10,000 cycles

R (resistive)

3 AMPS 30 VDC T85 10,000 cycles

DM61, DM62:

GP (general purpose)

10 AMPS 125 VAC 50/60 Hz T85 10,000 cycles

5 AMPS 250 VAC 50/60 Hz T85 10,000 cycles

R (resistive)

10 AMPS 30 VDC T85 10,000 cycles

ELECTRICAL LIFE: 10,000 make-and-break cycles at full load.

INSULATION RESISTANCE:  $10^9 \Omega$  min.

DIELECTRIC STRENGTH: 1,000 Vrms min. @ sea level.

OPERATING TEMPERATURE: -20°C to +65°C

## Materials

HOUSING & ACTUATOR: 6/6 nylon (UL94V-2), black.

MOVABLE CONTACTS: DM2X Models: Copper, silver plated.

DM6X Models: Coin silver, silver plated.

STATIONARY CONTACTS & TERMINALS: Copper or brass, silver plated.

CONTACT SPRING: Music wire or stainless steel.

**NOTE:** Any models supplied with Q contact material are RoHS compliant.

**NOTE:** Specifications and materials listed above are for standard switches.

For information on specific and custom switches, consult Customer Service Center.

## Build-A-Switch

To order, simply select desired option from each category and place in the appropriate box. Available options are shown and described on pages G-66 and G-69. For additional options not shown in catalog, consult Customer Service Center.

<b>Switch Function</b>	<b>Actuator</b>	<b>Actuator Color</b>	<b>Housing Style/Color</b>	<b>Terminations</b>	<b>Actuator Markings</b>	<b>Contact Material</b>
<b>DM21</b> DPDT, On-On	<b>J1</b> Rocker	<b>2</b> Black	<b>S2</b> Snap-in, black	<b>05</b> Quick connect	<b>NONE</b> No marking	<b>Q</b> Silver
<b>DM22</b> DPST, On-Off		<b>1</b> White	<b>B2</b> Recessed snap-in actuator guard, black		<b>D</b> ON-OFF	
<b>DM61</b> (STD.) DPDT, On-On			<b>G2</b> Actuator guard, black		<b>H</b> 0 1	
<b>DM62</b> (STD.) DPST, On-Off					<b>P</b> 0 -	



DM Series  
Miniature 2 Pole Power Rocker Switches

SWITCH FUNCTION

NO. POLES	MODEL NO.	AMP RATING*	SWITCH FUNCTION		CONNECTED TERMINALS		SCHEMATIC
			POS. 1	POS. 2	POS. 1	POS. 2	
DP	DM22	3	ON	OFF	1-1A, 2-2A	OPEN	DPST
	DM62	10					
	DM21	3	ON	ON	1-1A, 2-2A	1-1B, 2-2B	DPDT
	DM61	10					

**DPDT**

PART NUMBER SHOWN: DM21J1XS205Q

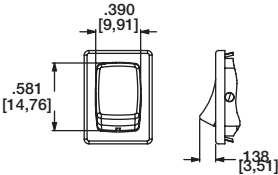
NOTES 1. ACTUATOR SHOWN IN POSITION 1-'ON' POSITION

RATINGS: See page G-65 for complete ratings.

UL 61058-1 tested to 30C temperature rise @ 6,000 cycles.

ACTUATOR

J1 ROCKER

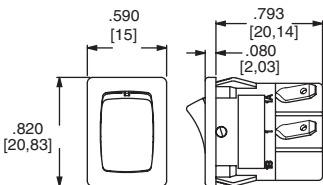


OPTION CODE	ACTUATOR COLOR
2	BLACK
1	WHITE

NOTE: Actuator finish: matte. Other colors available, consult Customer Service Center.

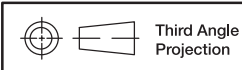
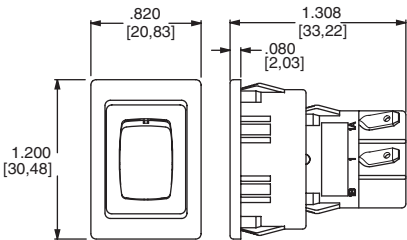
HOUSING STYLE/COLOR

S2 SNAP-IN, BLACK



NOTE: Housing finish: matte. Other colors available, consult Customer Service Center.

B2 RECESSED SNAP-IN ACTUATOR GUARD, BLACK



Third Angle Projection

Dimensions are shown: Inches (mm)  
Specifications and dimensions subject to change



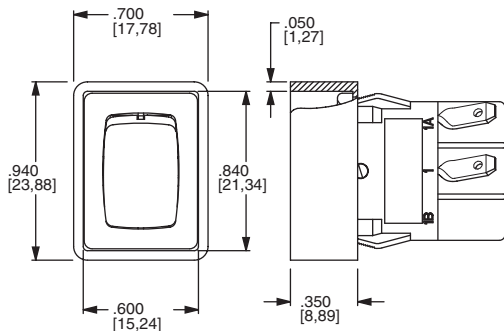
15 May 20



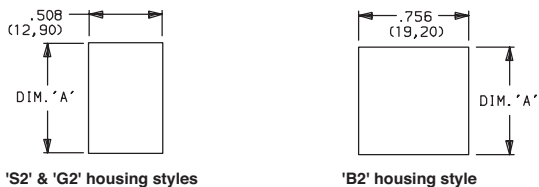
# DM Series Miniature 2 Pole Power Rocker Switches

## HOUSING STYLE/COLOR

### G2 ACTUATOR GUARD, BLACK



### PANEL MOUNTING



'S2' & 'G2' housing styles

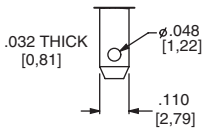
'B2' housing style

NOTE: Blank insert available for SP models only, see page H-76.

PANEL THICKNESS	DIM 'A' 'S2' & 'G2' HOUSING STYLES	DIM 'A' 'G2' OPTION SP MODELS ONLY	DIM 'A' 'B2' HOUSING STYLES
.030-.049 (0,76) (1,24)	.756 (19,20)	0.764 (19,41)	1.068 (27,13)
.049-.079 (1,24) (2,01)	.764 (19,41)	0.780 (19,81)	1.076 (27,33)
.079-.118 (2,01) (3,00)	.780 (19,81)	n/a	1.092 (27,74)

## TERMINATIONS

### 05 QUICK CONNECT



## ACTUATOR MARKINGS

### NONE NO MARKING



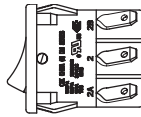
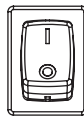
### D ON-OFF



### H O I



### P O -



NOTE: Orientation of actuator markings and terminals.

'D' & 'P' marking options: marking color white, standard for all actuator colors except white actuators. Black marking color standard for white actuators. Consult Customer Service Center for other available marking colors.

## CONTACT MATERIAL

OPTION CODE	CONTACT AND TERMINAL MATERIAL	RATINGS		
Q	SILVER 1,2	DM21, DM22:	GP (general purpose)	3 AMPS 125 VAC 50/60 Hz T85 10,000 cycles
				2 AMPS 250 VAC 50/60 Hz T85 10,000 cycles
			R (resistive)	3 AMPS 30 VDC T85 10,000 cycles
		DM61, DM62:	GP (general purpose)	10 AMPS 125 VAC 50/60 Hz T85 10,000 cycles
				5 AMPS 250 VAC 50/60 Hz T85 10,000 cycles
			R (resistive)	10 AMPS 30 VDC T85 10,000 cycles

\* Note: See Technical Data section of this catalog for RoHS compliant and compatible definitions and specifications.

1 MOVABLE CONTACT: DM2X Models: Copper, silver plated.  
DM6X Models: Coin silver, silver plated.

2 STATIONARY CONTACTS & TERMINALS: Copper or brass, silver plated.

NOTE: Any models supplied with Q contact material are RoHS compliant.



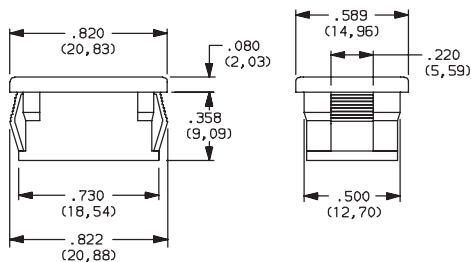
Dimensions are shown: Inches (mm)  
Specifications and dimensions subject to change

www.ckswitches.com

# DM Series Miniature 2 Pole Power Rocker Switches

## AVAILABLE HARDWARE

Insert

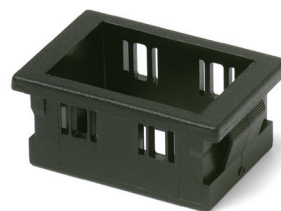


PART NO.

**057190200**

Material: Nylon 6/6  
Finish: Matte

Recessed Actuator Guard

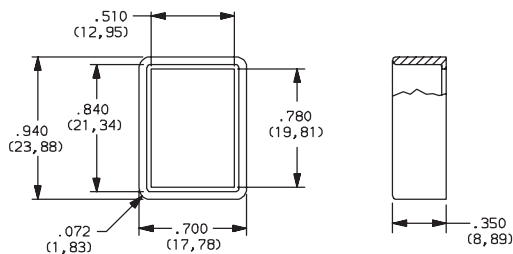


PART NO.

**599D02000**

Material: 6/6 Nylon  
Finish: Matte

Actuator Guard



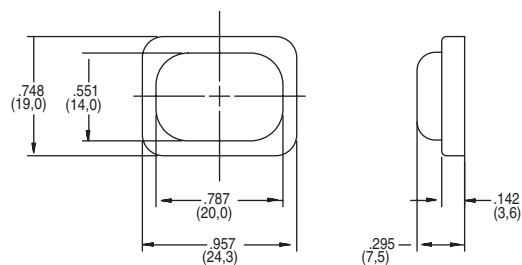
PART NO.

**104C22000**

Material: PBT thermoplastic  
Finish: Matte

PART NO.

**216C00000** IP54 SPLASH PROOF RUBBER BOOT



## DM Series



- **3 AMPS to 10 AMPS**
- **Illuminated LED**
- **Positive detent**
- **RoHS compliant**

- **Instrumentation**
- **Industrial**
- **Office machines**

## CONTACT RATING:

GP (general purpose)

3 AMPS @ 125 V AC; 2 AMPS @ 250 V AC.

R (resistive)

3 AMPS 30 VDC 10,000 cycles

DM54 and DM64 Models:

GP (general purpose)

10 AMPS @ 125 V AC; 5 AMPS @ 250 V AC (UL).

R (resistive)

10 AMPS 30 VDC 10,000 cycles

**ELECTRICAL LIFE:** 10,000 make-and-break cycles at full load.

INSULATION RESISTANCE:  $10^9 \Omega \text{ min.}$

**DIELECTRIC STRENGTH:** 1,000 Vrms min. @ sea level.

HOUSING: 6/6 nylon (UL94V-2), black.

ACTUATOR: 6/6 nylon (UL94V-2), black.

MOVABLE CONTACTS: DM14 and DM24 Models: Copper, silver plated. DM54 and DM64 Models: Coin silver, silver plated.

STATIONARY CONTACTS & TERMINALS: Copper or brass, silver plated.

LED TERMINALS: Brass, unplated.

**CONTACT SPRING:** Music wire or stainless steel.

OPERATING TEMPERATURE: -20°C to +65°C

**NOTE:** Any models supplied with Q contact material are RoHS compliant.

**NOTE:** Specification and materials listed above are for standard switches.  
For information on specific and custom switches, consult Customer Service Center.

To order, simply select desired option from each category and place in the appropriate box. Available options are shown and described on pages G-70 and G-73. For additional options not shown in catalog, consult Customer Service Center.



**DM14** SPST, 3 AMP  
**DM24** DPST, 3 AMP  
**DM54** SPST, 10 AMP  
**DM64** DPST, 10 AMP

## Actuator

**J7** Rocker with colorless LED window

### Actuator Color

**2** Black  
**1** White

### Housing Style/Color

**S2** Snap-in, black  
**G2** Actuator guard, black

## Terminations

## 05 Quick connect

### Contact Material

**Q Silver**






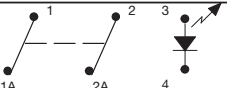
**LED Color**

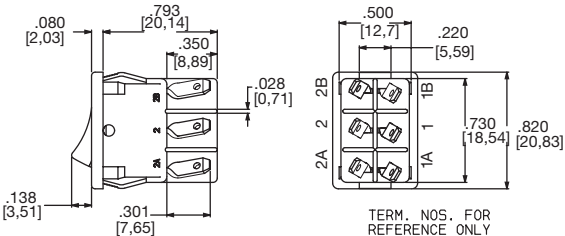
- 3 Red
- 4 Amber
- 6 Green

# DM Series

## Miniature Illuminated Power Rocker Switches

### SWITCH FUNCTION

NO. POLES	MODEL NO.	AMP RATING*	SWITCH FUNCTION		CONNECTED TERMINALS		SCHEMATIC
			POS. 1	POS. 2	POS. 1	POS. 2	
							
SP	DM14	3	ON	OFF	1-1A	OPEN	
	DM54	10					
DP	DM24	3	ON	OFF	1-1A, 2-2A	OPEN	
	DM64	10					
DPDT							



Actuator shown in pos. 1 – 'ON' position.  
SPST MODELS (D M14 & DM54) OMIT TERM INALS 2 & 2A.

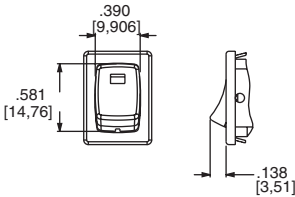
Part number shown: DM24J72S205Q3

\* RATINGS: see page G-69.



### ACTUATOR

**J7** ROCKER WITH COLORLESS LED WINDOW

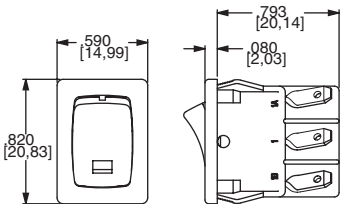


OPTION CODE	ACTUATOR COLOR
2	BLACK
1	WHITE

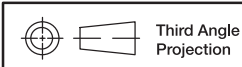
**NOTE:** Other colors available, consult Customer Service Center.

### HOUSING STYLE/COLOR

**S2** SNAP-IN, BLACK



**NOTE:** Housing finish: matte. Other colors available, consult Customer Service Center.



Dimensions are shown: Inches (mm)  
Specifications and dimensions subject to change



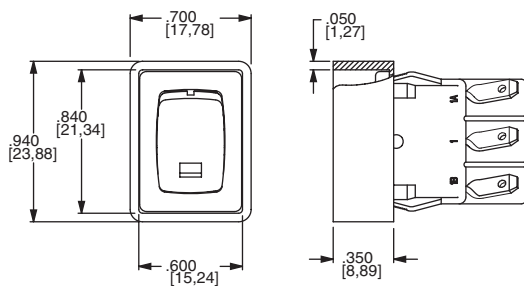
15 May 20



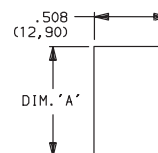
# DM Series Miniature Illuminated Power Rocker Switches

## HOUSING STYLE/COLOR

### G2 ACTUATOR GUARD, BLACK



### PANEL MOUNTING



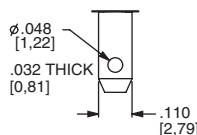
### 'S2' & 'G2' housing style

NOTE: Blank insert available for SP models only, see page H-80.

PANEL THICKNESS	DIM 'A' 'S2' & 'G2' HOUSING STYLES	DIM 'A' with 'G2' option SP MODELS ONLY
.030-.049 (0,76) (1,24)	0.756 (19,20)	0.764 (19,41)
.049-.079 (1,24) (2,01)	0.764 (19,41)	0.780 (19,81)
.079-.118 (2,01) (3,00)	.780 (19,81)	n/a

## TERMINATIONS

### 05 QUICK CONNECT



## CONTACT MATERIAL

OPTION CODE	CONTACT AND TERMINAL MATERIAL	RATINGS			
Q	SILVER 1,2	POWER	DM14, DM24:	GP (general purpose)	3 AMPS @ 125 V AC; 2 AMPS @ 250 V AC.
				R (resistive)	3 AMPS 30 VDC 10,000 cycles
			DM54, DM64:	GP (general purpose)	10 AMPS @ 125 V AC; 5 AMPS @ 250 V AC.
				R (resistive)	10 AMPS 30 VDC 10,000 cycles

\* Note: See Technical Data section of this catalog for RoHS compliant and compatible definitions and specifications.

<sup>1</sup> MOVABLE CONTACTS: DM14 and DM24 models: Copper, silver plated.  
DM54 and DM64 models: Coin silver, silver plated.

<sup>2</sup> STATIONARY CONTACTS & TERMINALS: Copper or brass, silver plated.

NOTE: Any models supplied with Q contact material are RoHS compliant.



## LED COLOR

OPTION CODE	LED COLOR	FORWARD $V_{FD}$	CURRENT $I_{LED}$	REVERSE $V_R$	INTENSITY $M_{CD}$	RECOMMENDED RESISTOR @ VOLTAGE		
						5V	12V	24V
3	Red	2.1	10	4V	1.6 typ.	270	1K	2.2K
4	Amber	2.2	20	4V	2.5 typ.	150	510	1.2K
6	Green	2.1	20	4V	2.0 typ.	150	510	1.2K



Dimensions are shown: Inches (mm)

Specifications and dimensions subject to change

www.ckswitches.com

15 May 20

G-72

Rocker



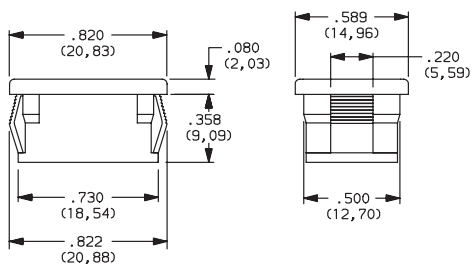
G

C&K

# DM Series Miniature Illuminated Power Rocker Switches

## AVAILABLE HARDWARE

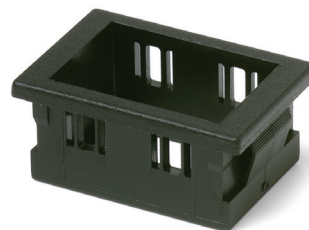
Blank Insert



PART NO.  
**057190200**

Material: Zinc nylon 6/6  
Finish: Matte

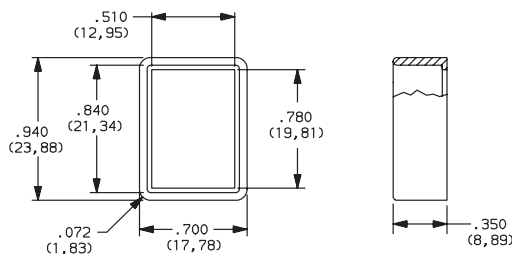
Recessed Bracket



PART NO.  
**599D02000**

Material: 6/6 Nylon  
Finish: Matte

Actuator Guard



PART NO.  
**104C22000**

Material: PBT thermoplastic  
Finish: Matte



# Mouser Electronics

Authorized Distributor

Click to View Pricing, Inventory, Delivery & Lifecycle Information:

## C&K Switches:

[DM61J1TB205Q](#) [DM61-J1-2-S2-05-Q](#) [104C22000](#) [216C00000](#) [599D02000](#) [DM54J72B205Q6](#) [DM24J72B205Q6](#)  
[DM64J72B205Q3](#) [DM54J72G205Q6](#) [DM22J12G205DQ](#) [DM24J71G205Q4](#) [DM14J72G205Q6](#) [DM62J12G205DQ](#)  
[DM61J12S205DQ](#)