

CS Series

4-way Adjustable Direction Switch



Features/Benefits

- ***Designed for mirror control***
- ***Wire harness and connector easy to customize***
- ***4-way adjustable directions***

Typical Applications

- **Automotive**
- **Industrial**

Specifications

CONTACT RATING: 0.2 A @ 12 VDC

OPERATING LIFE: 10,000 cycles

INSULATION RESISTANCE: 10 M Ω min. @ 500 VDC

DIELECTRIC STRENGTH: 500 V AC

OPERATING TEMPERATURE: -40°C to +90°C

OPERATING FORCE: L- OFF, R-OFF; 200 ±100 gf

OFF-L, OFF-R; 400 ± 200 gf

4 Direction; 500 ± 200 gf

Materials

KNOB: ABS

COVER: ABS

TERMINAL: Brass, tin plated

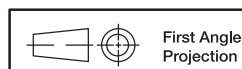
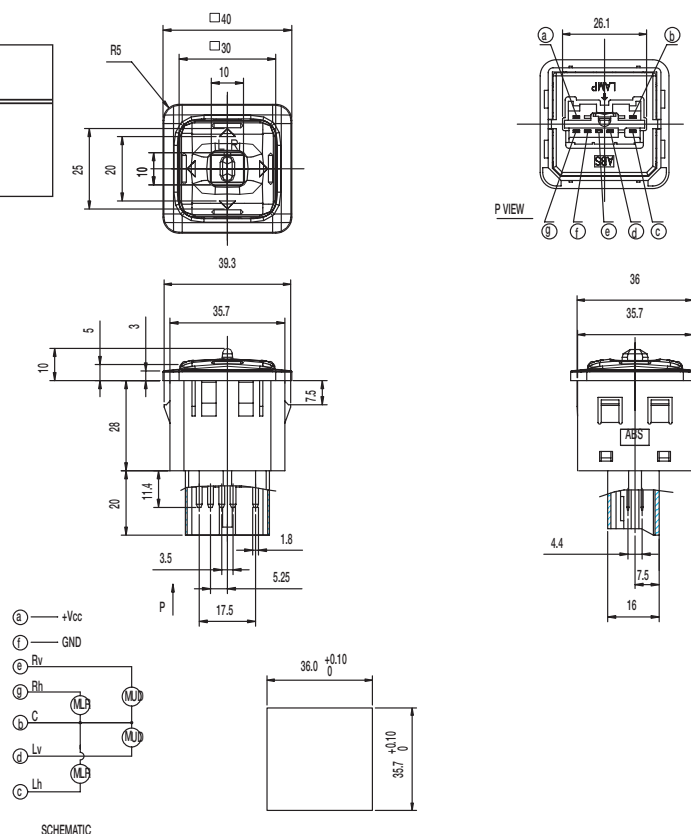
NOTE: Specifications and materials listed above are for switches with standard options. For information on specific and custom switches, consult Customer Service Center.

How To Order

Part number list is shown below.

Part Number (Part Description)	Product Details
CS-41001-E	4 directions switch with selector slide switch

PART NUMBER	PACKAGING
CS-41001-E	256 pieces



Dimensions are shown: mm
Specifications and dimensions subject to change

Mouser Electronics

Authorized Distributor

Click to View Pricing, Inventory, Delivery & Lifecycle Information:

[C&K Switches:](#)

[CS41001E](#)